

XSTONE

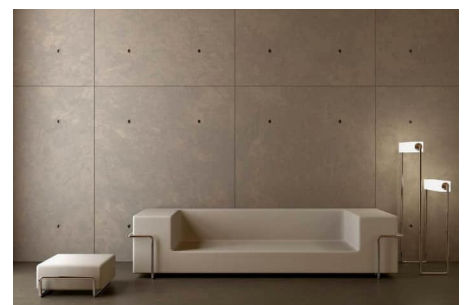
SURFACES

MINERAL VENEER | STONE ON A ROLL



FLEXIBLE MINERAL VENEER

Nature and innovation at the service of veneer





A UNIQUE AND REVOLUTIONARY PROCESS



FLEXIBLE MINERAL VENEER

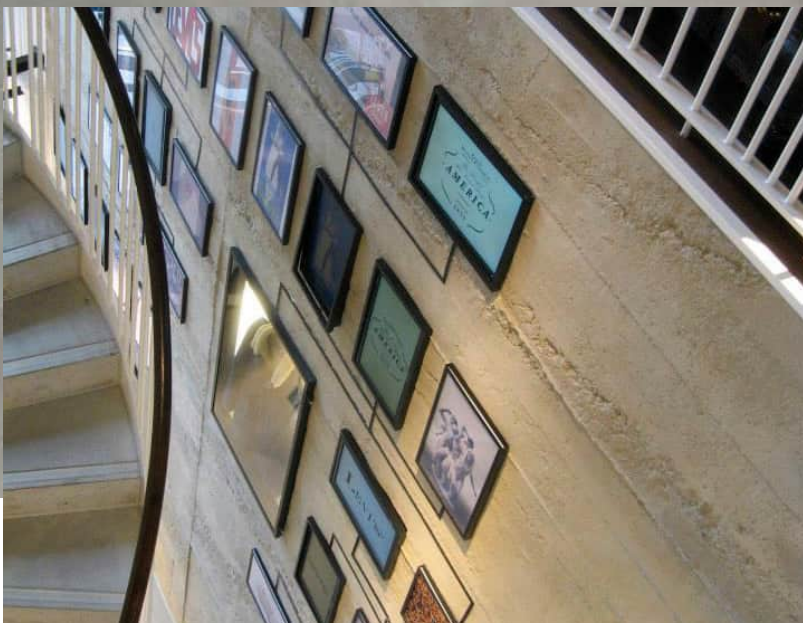
The XSTONE manufacturing process produces a mineral sheet with exceptional technical and aesthetic characteristics :

- A 100% real mineral surface (stone, concrete, rust)
- Reinforced with fiberglass and resin, making the material flexible and imperishable
- A thickness of only 2mm
- A weight of 2 Kg / m². Its light weight makes it easy to transport and install
- Applicable to a multitude of surfaces, interior or exterior: concrete, plaster, wood, metal, exterior insulation system, old tiles, etc.
- Costs, including installation, reduced by 50%
- Fire retardant and fire resistant
- Waterproof and moisture-proof once protected
- UV and weather resistant

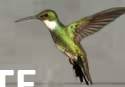
TECHNICAL CHARACTERISTICS

Description :	The mineral coating is a measured mixture of quartz, pigments and a copolymer adjuvant bonded to fiberglass. It is suitable for all intensive traffic, public or private. A finishing treatment, filler, wax, anti-stain oil repellent, helps prevent the usual penetration of food and other liquids and protects the surface from scratches.
Composition :	<ul style="list-style-type: none">• Copolymer dispersion adhesive• Fiberglass• 90% natural stone powder
Weight :	Total weight: 1.5- 2 Kg/m ²
Thickness :	Total thickness of the veneer : 1- 2 mm
Temperature :	Combustion temperature: 250 to 300°C





SOLUTION INNOVANTE
POUR DE NOUVELLES
ALTERNATIVES DE DÉCORATION



FLEXIBLE MINERAL VENEER

XSTONE is a mineral veneer whose fundamental advantage is its ease of installation. The innovative manufacturing process allows a layer of natural stone powder of only 2 mm to be bonded to fiberglass. Each sheet is unique because it is entirely hand made to recreate the original appearance and tactile sensations of the surface of stone, raw concrete, rusty metal. XSTONE is lightweight, with only 2 Kg/m², ideal for any decoration or construction project.

XSTONE can be used indoors and outdoors, for modern environments, New York lofts, industrial atmospheres, etc.. Unique and practical, XSTONE will allow you to stand out from your competitors thanks to its extraordinary technical characteristics and its unique design.

The ease of installation of XSTONE makes it practical for use in projects as large as building facades or as small as elevator shafts.

Easy to cut with a cutter, and shapeable with a heat gun, XSTONE can be easily installed without noisy tools or dust, in record time. It is perfect for the renovation of buildings, even in use, such as hotels, schools or businesses, enormously reducing downtime costs.

XSTONE is a premium veneer product for designers, fitters, architects and decoration professionals.

XSTONE is the most innovative form of natural stone, concrete, corten appearance which will allow you to create an infinite number of decorations with the only limit: "the imagination"....





TESTS / STANDARDS



CLASSIFICATION	STANDARDS	XSTONE
Description	EN 15102+A1	Decorative wall coverings- Rolls and panels. This European Standard applies to all types of wall covering products in the form of rolls and panels, intended to be installed on interior walls, partitions or ceilings using glue and whose main purpose is decorative.

CHARACTERISTICS	STANDARDS	
Total thickness (mm)	NF EN ISO 24346	1.88 mm
Length x Width (mm)	NF EN ISO 24341	3000 x1000 mm
Total Weight (g/m ²)	NF EN ISO 23997	1900 g/m ²
Wear layer	NF En ISO 24340	0,4 à 0,7 mm

PERFORMANCE	STANDARDS	
Reaction to fire	NF EN 13501-1	A2 S1 d0 (M0)
Impact resistance	NF EN 259-2	No visible splintering or cracking
Abrasion resistance	NF EN	27,7 mm
Washability	NF EN 12956	Washable and brushable after application of a water-oil repellent
Dimensional stability	NF EN ISO 23999	≤ 0,80 %
Heat Curling	EN 434	≤ 2 mm
Determination to flexibility	NF EN ISO 24344	No damage, no cracking
Resistance to stains and to chemicals	NF EN ISO 26987	Excellent after application of a water repellent- oil repellent
Thermal resistance	NF EN 12667	Combustion temperature: 90 to 120°C
Light fastness	NF EN ISO 105-B02	≥ 6
TVOC at 20 days	ISO 16000	< 100 µg/m ³ (A+)
Formaldehyde at 20 days	ISO 16000	Not detected

FIELDS OF USAGE

All premises in which interior or exterior wall or floor decoration is necessary. Living room, bedroom, bathrooms, SPA, hammam, office, hall, doors, furniture, ceiling, splashback, worktop, facade etc.

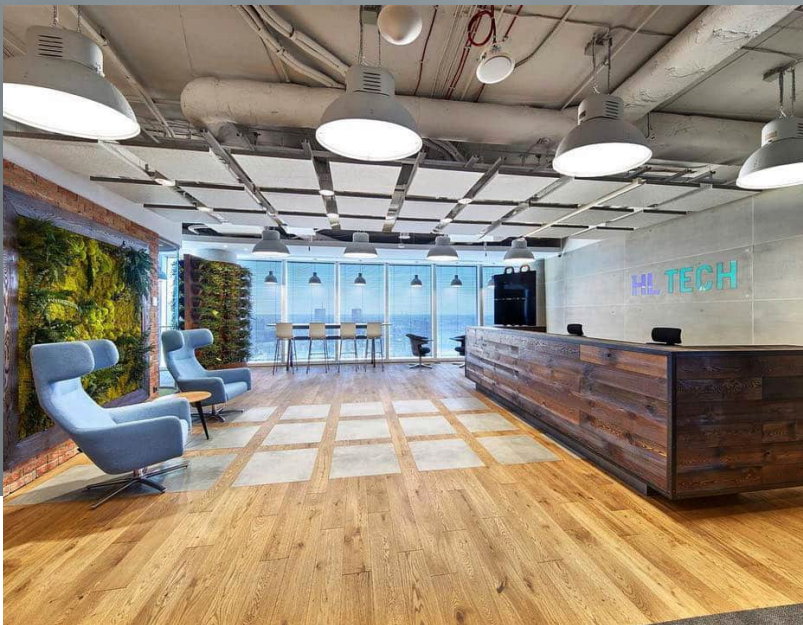
INSTALLATION

The installation must be carried out using glued installation and in accordance with the requirements of standard NF P 74-204-1 (DTU 59.4). The finishing appearance is type A (see article 6.2.3 of the standard). The temperature of the atmosphere must be at least equal to +15°C and that of the support at least equal to +12°C. The support must be flat, solid, smooth, dry, healthy, clean and normally absorbent. Remove the old coverings. Application of a primer compatible with the support and glue. Bonding with spray contact adhesive, acrylic, flex cement or recommended by XSTONE. Treatment of visible joints during installation with XSTONE joint sealant.

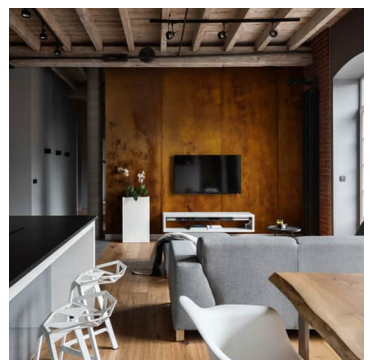
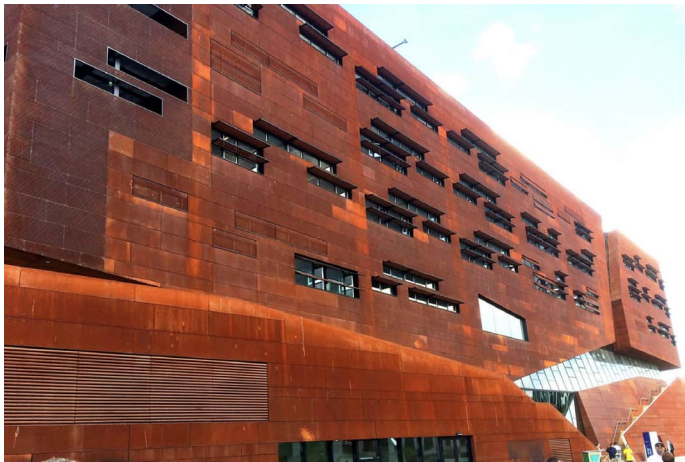
MAINTENANCE

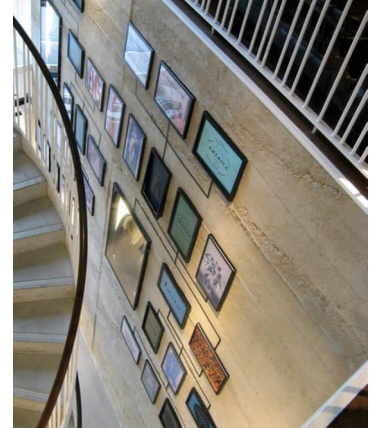
Wash with neutral detergent followed by rinsing with clean water.





APPLICATIONS





NOTICE :

The data presented here is based on information we believe to be reliable, but unknown risks may occur. We disclaim all liability for damages which arise from the use of the above data, and nothing contained therein constitutes a security or warranty (including warranties of merchantability or fitness for a particular purpose) or representation (including freedom from patentability) by us with regard to the correctness or completeness of the data of the product described or their use for a specific purpose as known to us. The final determination of the suitability of the information, the manner of use of the information or products and potential patent infringement is the sole responsibility of the user.

XSTONE
SURFACES

Mineral veneer | Stone on a Roll

info@xstone.fr

www.xstone.fr