

Installation Guide

Product characteristics

- Mineral-filled, resin-cross-linked surface on a glass fibre mat
- Delivered in rolls
- The material is lightweight, flexible and antistatic
- Dimensions: 3000 x 1000 mm / 2950x950 mm
- Thickness: 2 - 2.5 mm
- Weight: 2 kg / m²
- Made in Great Britain
- Produced with tested and certified recycled rock powder 96% content
- Hand-made production process
- Authentic effect through slight colour variations
- Practical dust-free processing/ installation
- Satisfying the A2 fire protection standard

STEP 1: PREPARATION

Check Material / Colour/ Unroll

Test the substrate: Before processing, check to ensure that the substrate is suitable for the intended application. The substrate must be dry, stable and dust-free, clean and smooth.

Tips: Prepare Walls and use a Primer if required to enable adhesive bond to the surface. Old layers that are to load bearing, wall covering and adhesive residue from previous wallpapering must be removed. Rough surfaces, holes and unevenness should be filled with a gypsum based filler.

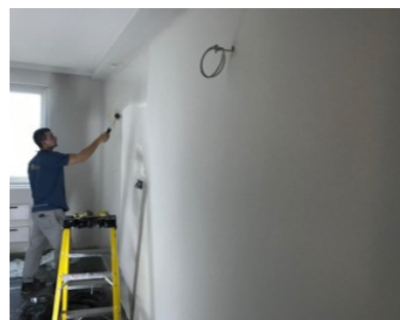
Acclimatisation: Prior to processing, the material should ideally be laid flat and acclimatised.

Processing temperature: We recommend that the material is processed at temperatures over +18 oC. Minimum processing temperature +15 oC.

Tips: In cold conditions it is possible to speed up your process by using a heat gun. Use on the lowest power mode and not longer than 10 seconds on the same spot as the surface can be damaged when exposed to a strong heat source for long time.

Storage is recommended in a dry area at ambient temperatures of min. 10 °C; long-term storage on rolls should be avoided

1 roll 3000 x 1000 mm (3 m² per roll) + Joint filler paste + indoor glue.





STEP 2: CUTTING - ADJUSTMENT OF THE FORMAT SIZE

Plan room for roll application

Layout: Think about windows/ doors and how stone would be cast/ cut i.e. no joints over heads, think about where you start the first roll so you don't end up with uneven wall/slabs.

Tools: The material can be cut easily using a cutter knife. On thicker surfaces a heat gun will ease this process. The material when bonded on MDF can be processed using standard carbide tools.

STEP 3: BONDING

Xstone Glue 9001

Apply our glue for indoor basic installation on sealed appropriate surfaces, using our glue mix with 2.5 ltrs of water, leave for 15 mins, then mix again, until you get a jelly mass. Use a roller/ brush to cover wall area and the back of your roll.

Adhesives

Heavy weight wallpaper adhesive for surfaces that are sealed or require additional bond strength i.e. Murabond Sealed Surface

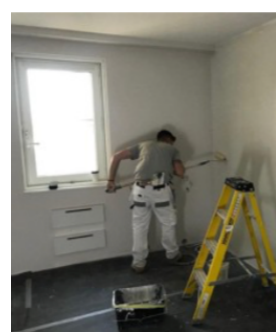
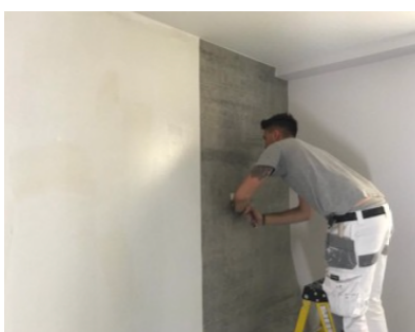
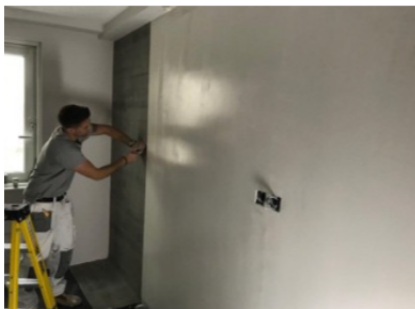
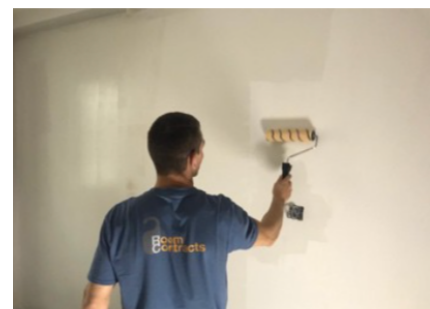
Contact adhesives: useful for curved surfaces

PVA: for pressing panels

Bonding around 90° corners

Corners can be bonded with a mitre finish and joint paste, or totally folded/bent material (only if using a contact adhesive) .

To avoid crack formations on the folded corner the material should be heated using the heat gun on the lowest power mode and not longer than 10 seconds on the same spot as the surface can be damaged when exposed to a strong heat source for long time.



STEP 4: INSTALLING

Hang Roll from the top/ let roll down the wall ensuring roll is fixed at the top.

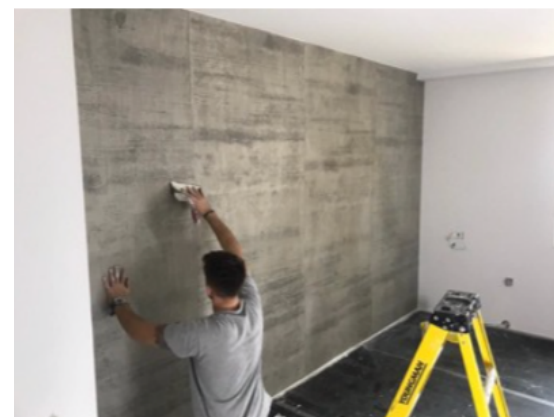
Apply pressure to surface with roller / wallpaper applicator

Cut roll length at bottom using, Staley knife/ ensure roll is stuck

Sweep your hand over the surface or use a pressure roller to ensure and remove any air pockets. This check should be performed repeatedly, to ensure that the full surface of the material is bonded.

Tips: We recommend to use a sponge when pressing to remove air pockets.

Repeat process until walls are covered





STEP 5: FILLING JOINTS

The product comes supplied with a pot of filling compound for filling joints, corners and edges.

Tips:

- Apply masking tape down the joints 5mm gap
- Apply joint paste using spatula
- Peel off masking tape whilst paste is wet
- Repeat over all joints/ around edges



STEP 6: SCRATCHING/ SANDING

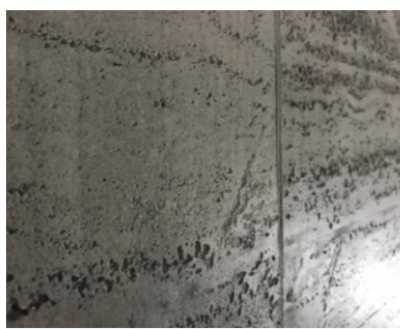
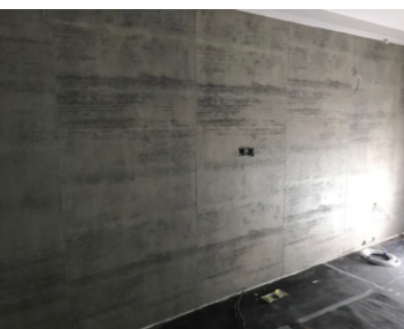
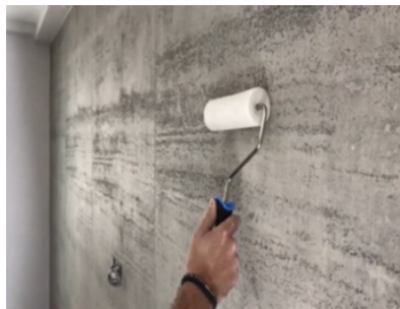
Using a 240 grit foam pad the surface can be scratched so that the material is characterised and to reduce any raised areas



STEP 7: SEALING

In wet zones or heavy duty surroundings it is necessary to use a special PU sealer on the surface (supplied separately)

- Use a roller/ brush to apply sealer
- Apply over all walls.
- Let it dry approx 6-12h .



For tips and videos



www.xstonedesign.com



STEP 8: ADDITIONAL SURFACE SEALING/ TREATMENTS

Plain Colours: A water based colour wash can be used to harmonise the joints/roll colours, bringing your own ideas and vision in the surface.

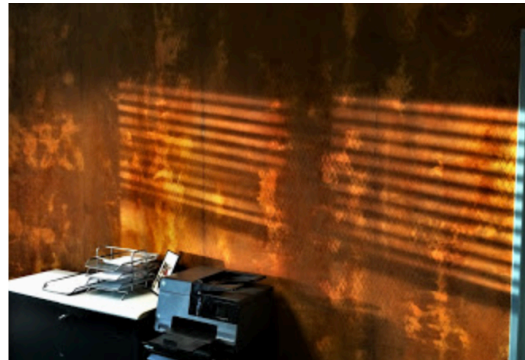
Rusts: Our products are made from real iron/ rust, a natural product, it will therefore have designs by nature. A PVA/Water sealer spray can be used to increase surface protection but please note colour will change so a trial should be conducted.

Black Slate/Fire Plank: Matt Black Wash to harmonise the colouring can be applied so joints and surface completely harmonise



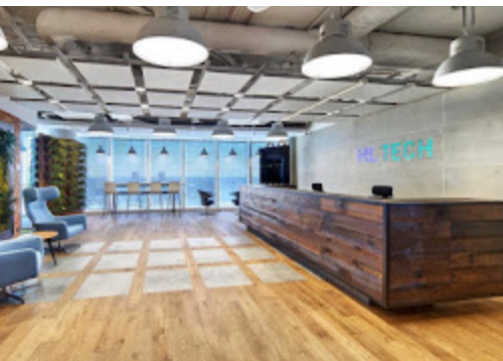
STEP 9

Install Furniture



STEP 10

Congratulations room is complete!



NOTE:

As the application and workmanship are outside of our control, the information provided above has no legal binding effect. The above information can only be general recommendations. The working conditions beyond our control exclude any claim from this information. In case of doubt, we recommend that you conduct sufficient tests yourself.