



natural
stone
surfaces
on a roll

Presentation

Splash protection

Splash protection following treatment with sealant

Factory acrylic sealing

Acrylic sealant applied in the factory

Decorative layer

Polymer-mineral decorative layer

Backing - woven fabric

Support: Fleece

Specifications

Width:	1000mm
Length:	3000mm
Typical thickness:	2mm
Base material:	Fibreglass textile
Flammability:	A2 EN13501-1
Haptics:	Roughness similar to concrete
Smoke Emission:	s1
Load capacity:	Similar to concrete
Permeable:	Yes
Bleaching Response:	Unknown N/A
Flaming Droplets:	d0
Solvents:	None
Quality of the substrate:	Q4 European standard

Characteristics



Abrasion-resistant



Excellent light resistance



Remove wet



Without joint and repeat



Flame-retardant



Paste wall



Full surface bonding



Fire behaviour



Splash protection possible



sustainability and environmental credentials

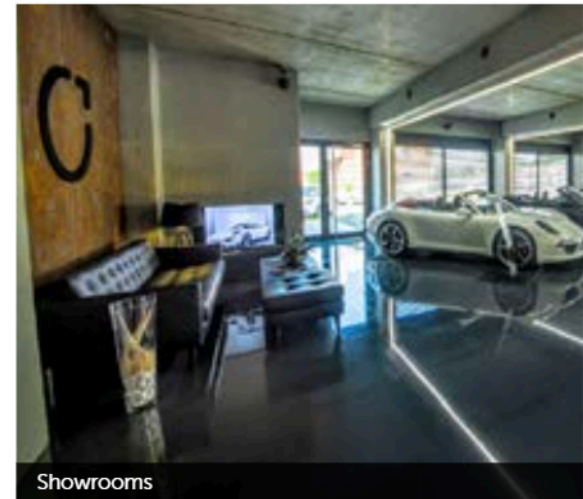
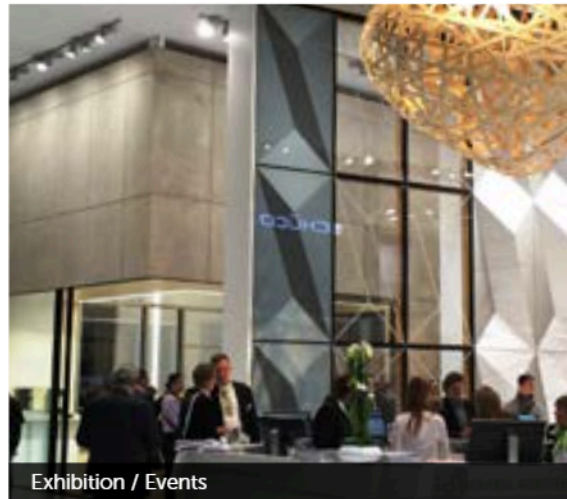
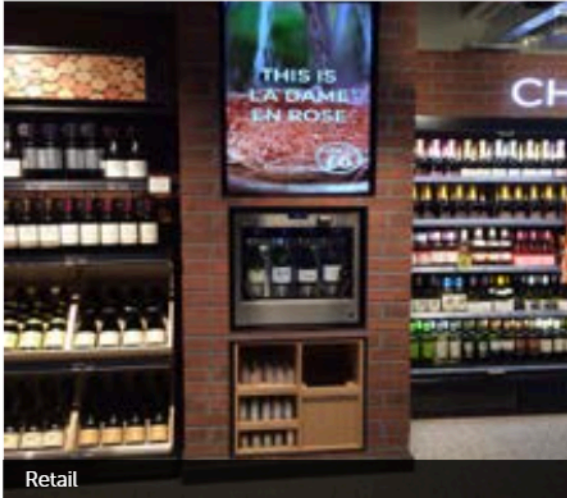
- Handmade in Germany using waste stone materials.
- Bonded to the flexible, fibreglass backing using petroleum free resin and natural pigments.
- Reduces environmental impact of mining virgin resources through effective use of waste materials.
- Applied using water-based adhesive
- The 'on a roll' concept allows removal from the underlying surface without damage – (can be reused for plasterboard applications).
- Extremely lightweight, XSTONE 'on a roll' can be delivered direct to sites, around the world, with a dramatically reduced carbon footprint compared to traditional, heavy alternative decorative sheet and tile materials.
- Fire rated to A2 EN13501-1, XSTONE is REACH compliant and does not emit VOCs.
- EPD application in process



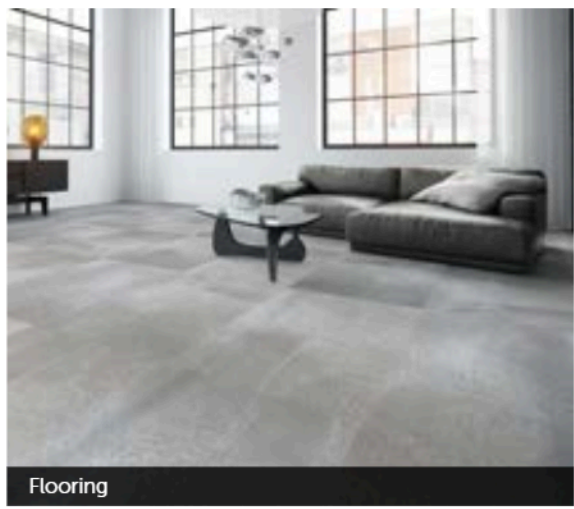
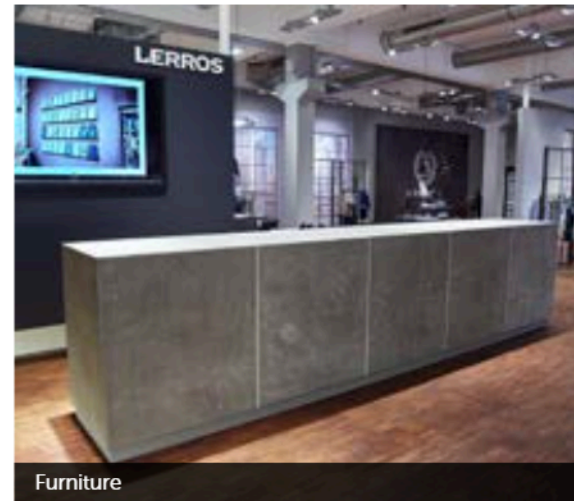
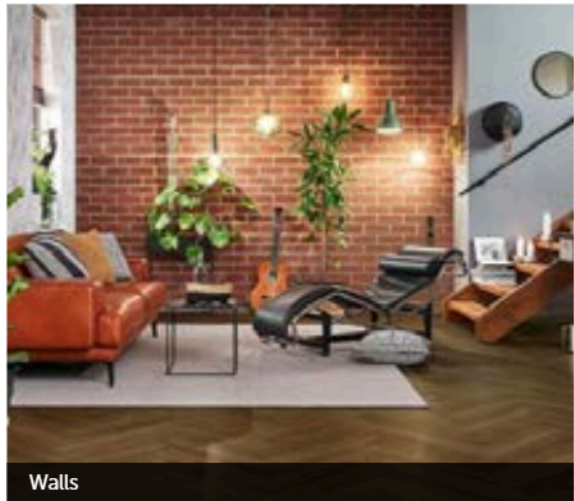
XSTONE has appointed Joanna Knight as Sustainability Advisor. Women in Office Design's Sustainability Manager, Joanna is also a published writer and researches the environmental impact of the interiors and fit-out markets. She is currently working with colleagues in Germany to produce further materiality and LCA data.



primary market sectors



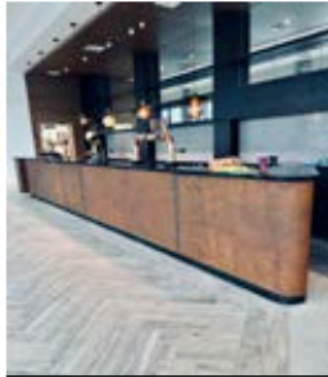
applications



portfolio



Fashion Retail



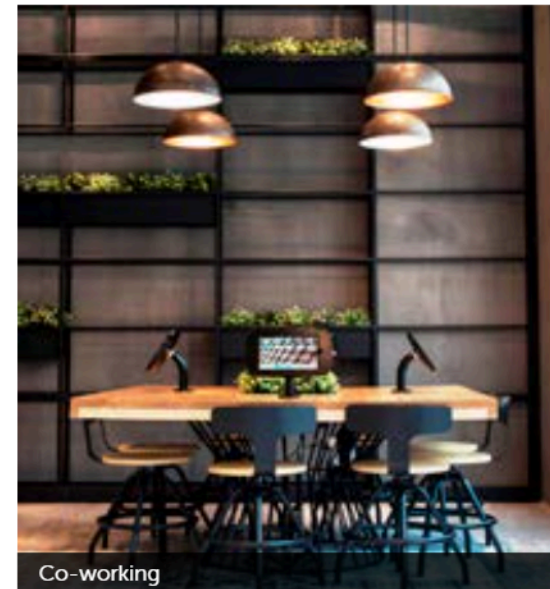
Restaurant / Bar



IBIS Hotels



Corporate reception



Co-working



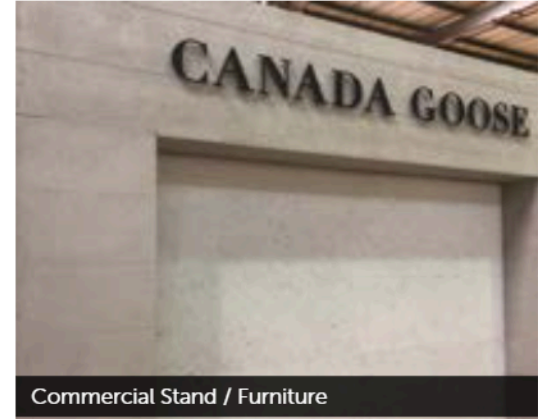
portfolio



AMOUAGE Commercial fit-out



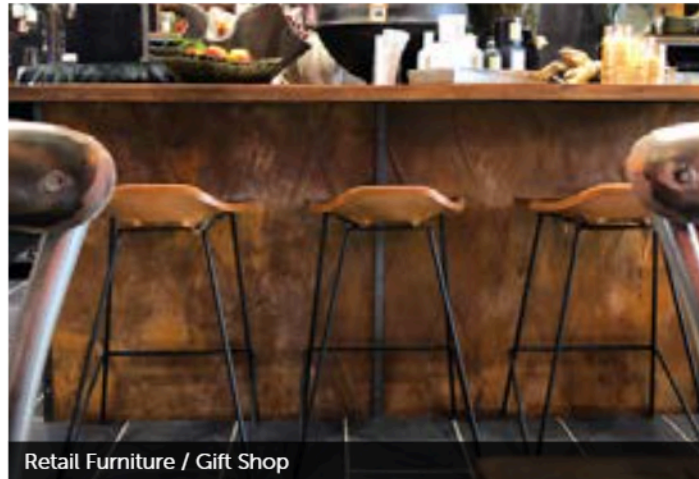
M&S Supermarkets



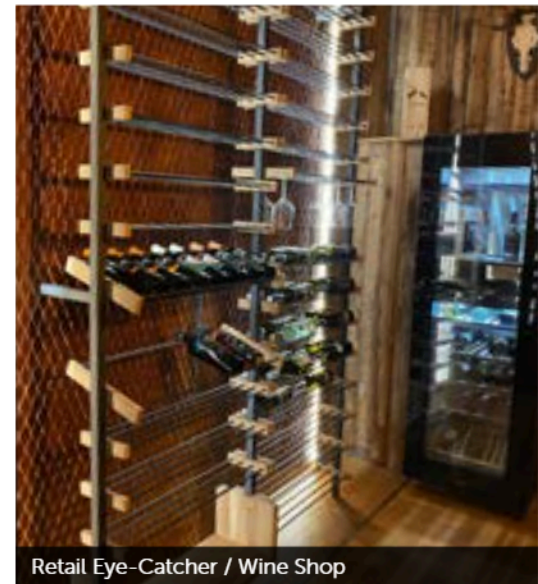
Commercial Stand / Furniture



Furniture / Coffee Shop



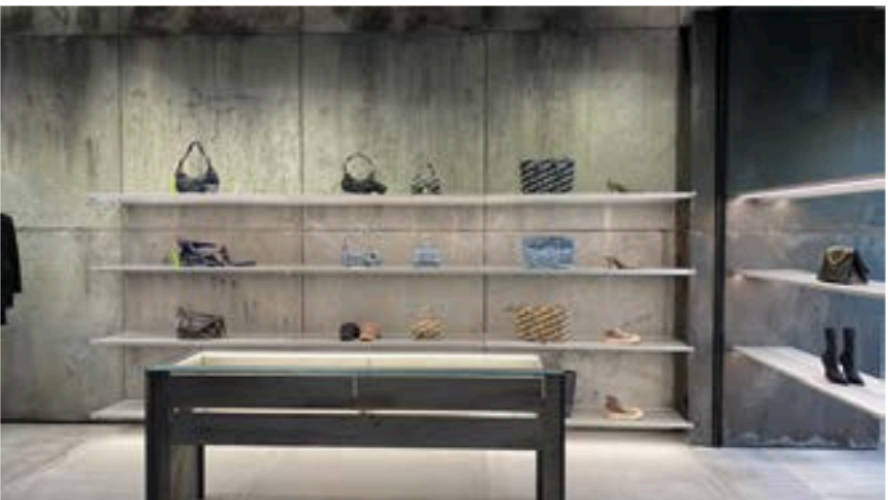
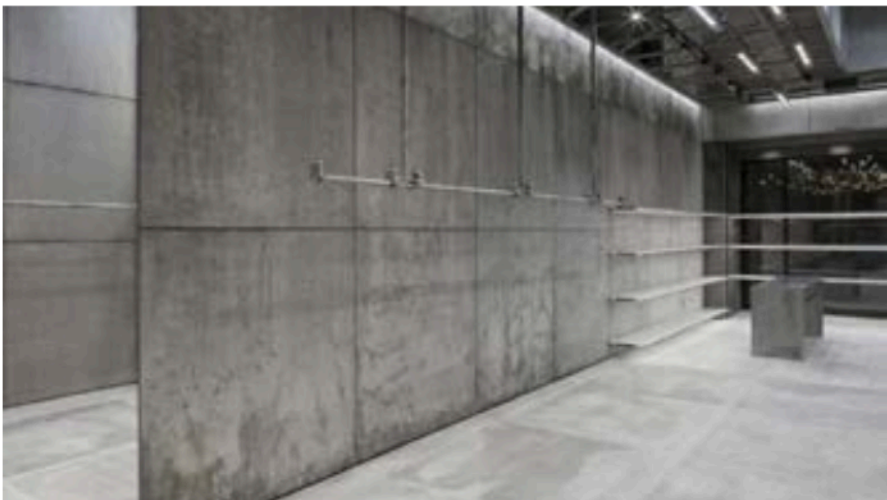
Retail Furniture / Gift Shop



Retail Eye-Catcher / Wine Shop

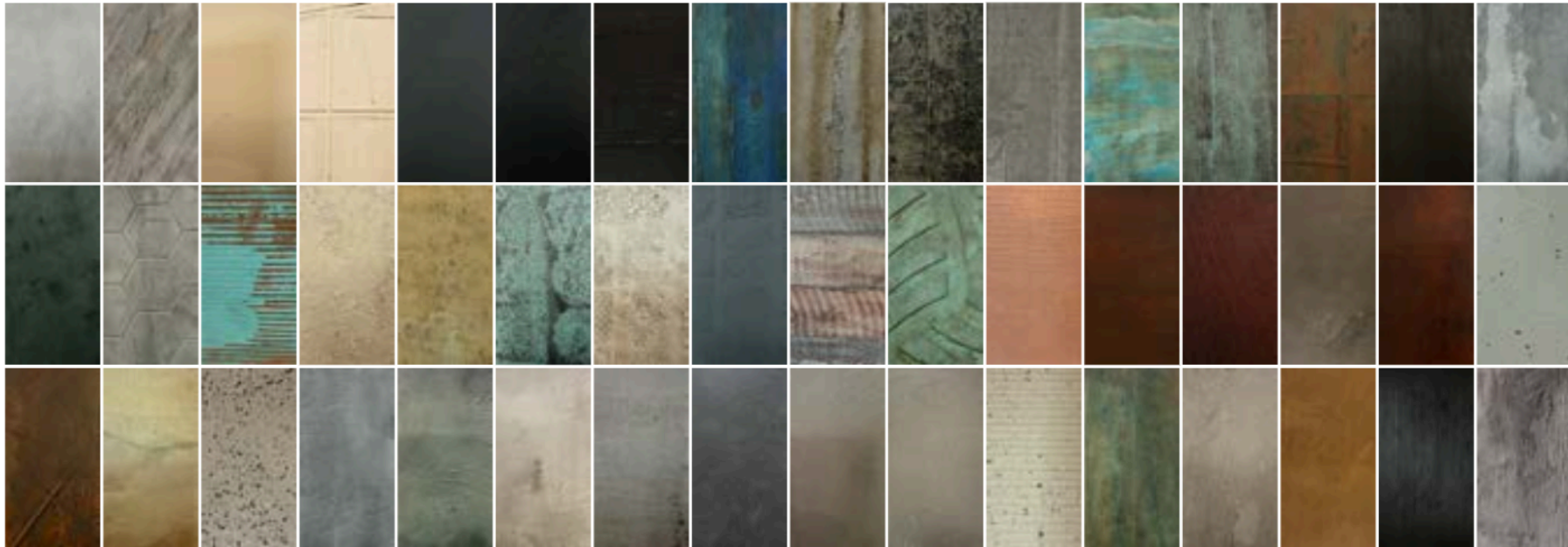


case study



the xstone journey

- Specify preferred finish



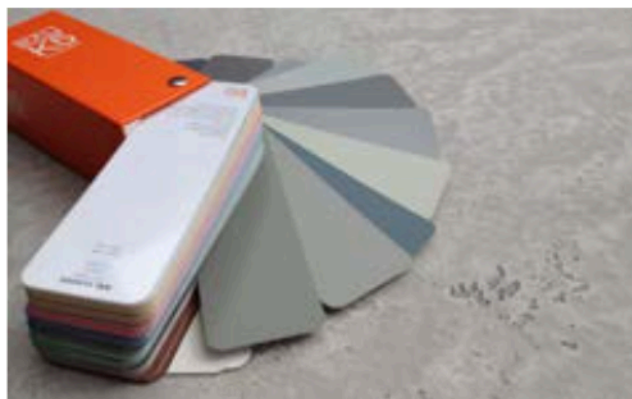
- Assign fitter, joiner or shopfitter
- Technical support and live online training available



bespoke

We can create bespoke finishes for specific projects if required. Minimum quantities will apply subject to the design.

Talk to our team :
info@xstone.group



「be unique」

X²STONE[®]
SURFACES

www.xstone.group