



Headquarters LX Hausys, Ltd 98, Huam-ro, Jung-gu, Seoul, Korea, 04637(LG Seoul Station Building) / Email : lxinfo@lxhausys.com / www.lxhausys.com

SALES SUBSIDIARY

U.S.A (Atlanta)

LX Hausys America Inc.
900 Circle 75 Pwky Suite#1500 Atlanta GA30339, U.S.A
TEL : +1-678-486-8220

EUROPE (Frankfurt)

LX Hausys Europe GmbH
Lyoner Str. 15 Atricom C6, D/60528 Frankfurt am Main, Germany
TEL : +49-69-583029-0

RUSSIA (Moscow)

LX Hausys Rus, LLC
Lesnaya Plaza 8th floor, 4, 4th Lesnoy pereulok, Moscow, 125047, Russia
TEL : +7-495-663-39-58

INDIA (Gurgaon)

LX Hausys India Private Ltd.
7F, Emmar MGF Digital Green, Tower B, Golf Course Ext. Road, Secotor 61,
Gurgaon-122009, Haryana, India
TEL : +91-124-421-2590

CANADA (Toronto)

LX Hausys Canada, Inc.
20 Norelco Drive, North York, Ontario, M9L 2X6, Canada
TEL : +1-905-660-4746

JAPAN (Tokyo)

LX Hausys Tokyo Branch
100-0004 Tokyo Sankei Building 25F, 1-7-2 Otemachi,
Chiyoda-ku, Tokyo, Japan
TEL : +81-3-5299-4533

REPRESENTATIVE OFFICES

TURKIYE

TK Deco Yapı Teknolojileri Limited Şirketi
Yeşilköy Mah. Atatürk Cad.
Dünya Ticaret Merkezi B2 Blok 34149 Kat:8 No: 280 Bakırköy, İstanbul
TEL : +90-212-285-11-01 / +90-535-104-11-91

TAIWAN

TAODE Enterprise Ltd.
Rm. B2, 10F., No. 49, Sec. 3, Minsheng E.
Rd., Zhongshan Dist., Taipei City 104483, Taiwan
TEL : +886-2-3771370

THAILAND

CK Cooperation Co.,Ltd
77/3 Village No.4, Bueng Kham Phroi Sub-District, Lam Luk Ka District,
Pathum Thani Province 12150, Thailand
TEL : +66-95-7982565

VIETNAM

TARA VIET NAM CONSULTING AND DEVELOPMENT.,LTD
Room 302, Sunlight house building, 12 street 1,
Tan Phu ward, District 7, Ho Chi Minh city, Viet Nam
TEL : +84-28-36200047(Office) / +84-9762-10411(Mobile)

BENIF

2023
-
2024



Interior Film



www.lxhausys.com

BENIF

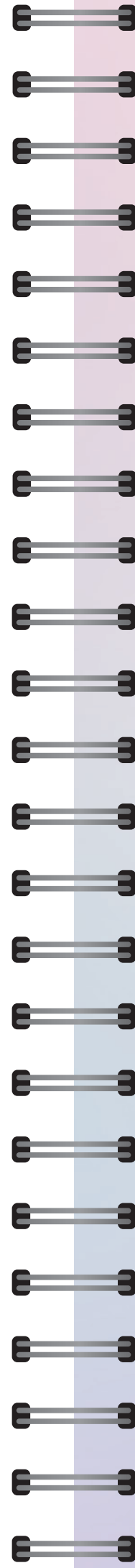


Interior Film

Contents

| | |
|------------------------------------|----|
| Recommendation_추천 | 06 |
| Dual_듀얼 | 12 |
| Misty_미스티 | 16 |
| Emboss_엠보스 | 18 |
| Solid_솔리드 | 24 |
| Metal_메탈 | 26 |
| Classic Wood_클래식 우드 | 32 |
| Big Wood_빅 우드 | 44 |
| Premium Wood_프리미엄 우드 | 52 |
| Wood_우드 | 62 |
| Big Stone_빅 스톤 | 76 |
| Stone_스톤 | 81 |
| Stucco_스타코 | 85 |
| Concrete / Mortar_콘크리트/모르타르 | 86 |
| Marble_마블 | 88 |
| Textile_텍스타일 | 90 |
| Leather_레더 | 94 |
| Specialty_스페셜티 | 96 |
| Certification & Test Report_인증&성격서 | 98 |

- 방염 컬러
Flame Retardant
- 비방염 컬러
Non-Flame Retardant
- N 2023년 출시 신제품입니다.
This is a new product to be released in 2023.
- Ⓜ 이미지에 적용된 컬러입니다.
The color is applied to the photographic image.
- ⚠ 해당 컬러는 샘플북 맨 뒤 시공 유의사항을 반드시 지켜주세요.
Be sure to follow the application instructions at the back of the sample book for the relevant color.



BENIF

당신이 바라던
공간에 대한 모든 것,
Benif에 있습니다.

*Everything you could ever long for in a space,
BENIF has.*



LX하우시스 인테리어필름의
다양한 정보를 온라인에서 만나보세요.
Discover various information about
LX Hausys Interior Films online.

www.lxhausys.com/gl/index



LX지인 도어와 창호를
인테리어필름과 함께 리모델링해보세요.
Try remodel your LX Z:IN doors and windows
with Interior Film.

www.lxbenifcolortable.com



LX지인 인테리어필름의
Repeated Image들을 확인해보세요.
Please check the repeated images of LX Z:IN
Interior Film.

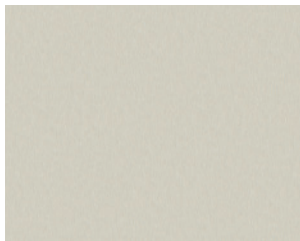
www.lxbenifdesign.com

Recommendation

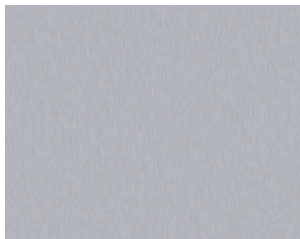
Dual 듀얼

빛의 각도에 따라 때론 우아하게,
때론 유니크하게.
공간에 새로움을 더합니다.

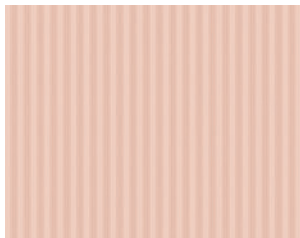
*Depending upon the angle of light,
sometimes elegantly and sometimes uniquely.
Increase novelty to the space.*



DP002



DP005



NV003



NV002



DP002 / NV003

※ 상기 이미지 안의 제품 패턴과 색상은 실제 제품과 차이가 있을 수 있음을 알려드립니다.

Recommendation

Stone 스톤

깔끔한 미스티 스톤의 배경과 오브제가 만나 꿈꾸던 미니멀한 공간이 탄생합니다.

A background of neat Misty Stone and an objet meet to create a minimalistic space that you have dreamed of.



SM013



Big Stone 빅스톤

빅 그라니트가 선사하는 중후하고 역동적인 분위기는 럭셔리함을 한층 높입니다.

The imposing and dynamic mood presented by Big Granite increases luxury.



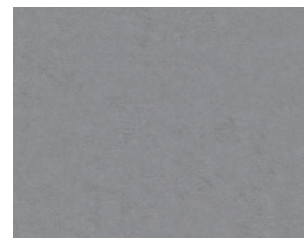
BM015



SM013



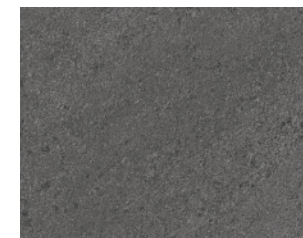
SM015



SM016



BM015



BM019

Big Granite

※ 상기 이미지 안의 제품 패턴과 색상은 실제 제품과 차이가 있을 수 있음을 알려드립니다.

※ We notice that pattern and color of the product in the above image might differ from the actual product.

Recommendation

Textile 텍스타일

부드럽고도 섬세한 크로스 패브릭에
은은한 조명이 더해질 때,
포근함이 완성됩니다.

*When soft and detailed cross fabric is added with
delicate lighting, the coziness is completed.*

SF012



SF012



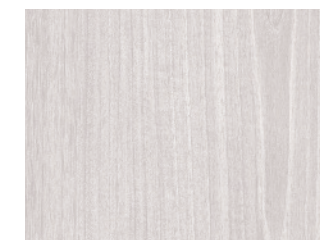
SF015

Wood 우드

빅 우드와 클래식 우드의
차분하고도 섬세한 나뭇결이
근사한 분위기를 선사합니다.

*The calm and detailed wood grain of Big Wood and
Classic Wood creates a splendid mood.*

BW020 / PW141



BW020



PW141

Walnut

Soft Walnut

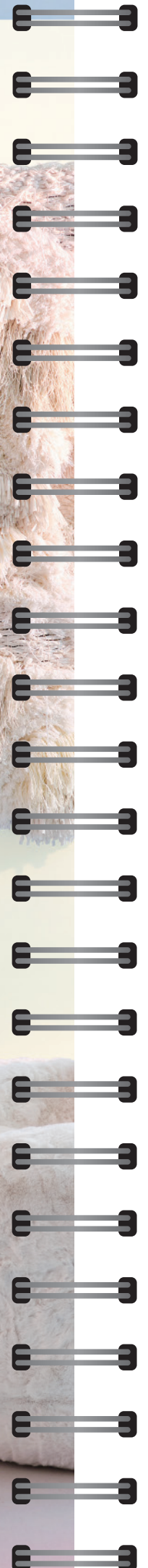
Dual 듀얼

빛의 각도에 따라 우아하고도 고급스럽게 나만의 독창적인 공간을 연출합니다.
Elegantly and luxuriously according to the angle of light. Create your own unique space.

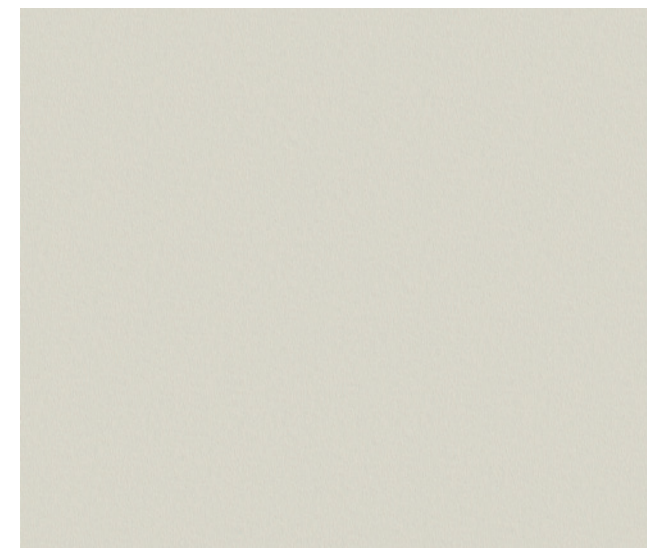


DP001 / DP002

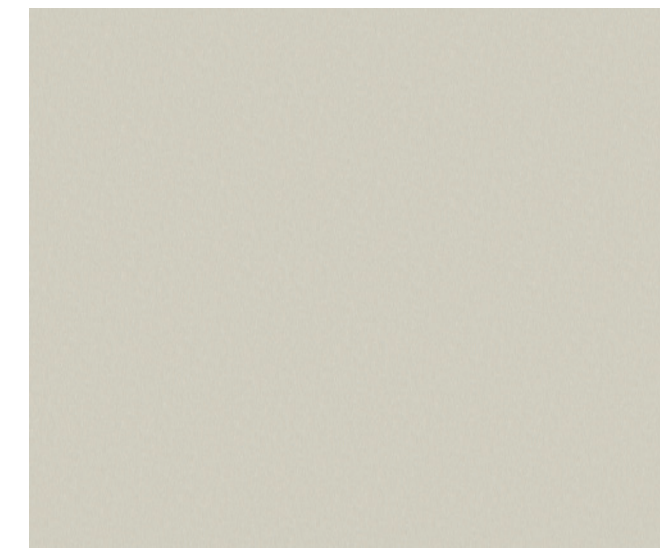
※ 상기 이미지 안의 제품 패턴과 색상은 실제 제품과 차이가 있을 수 있음을 알려드립니다.
 ※ We notice that pattern and color of the product in the above image might differ from the actual product.



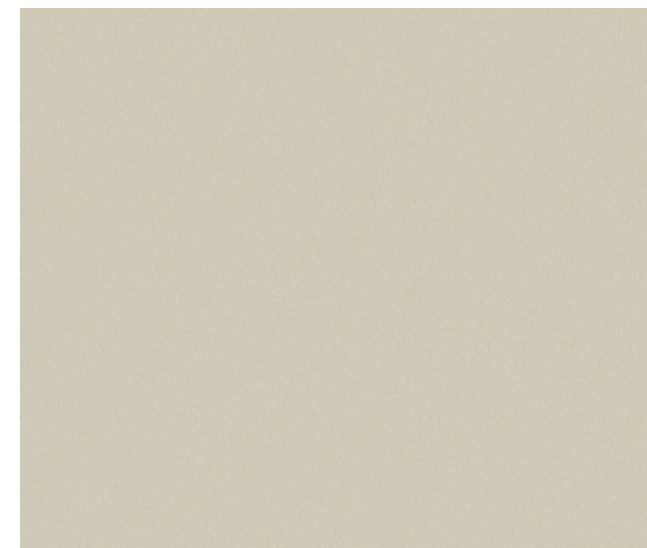
※ 컬러의 단위 무늬(반복 무늬)와 확대 이미지를 On-Line에서 만나보세요.(On-Line 상의 이미지들은 실제 색상과 다를 수 있으니, 실물을 반드시 확인해보세요.)
 ※ Meet the color unit pattern(repeated) and enlarged images online.(Images online may differ from actual colors, please check the actual product.)



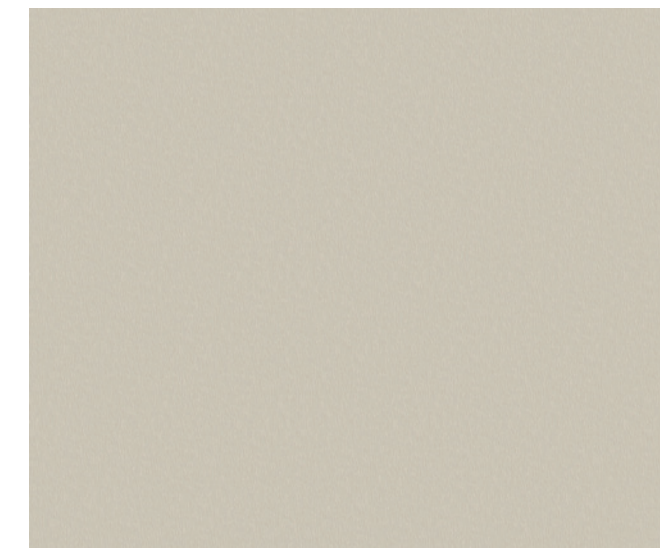
DP001 ■ N



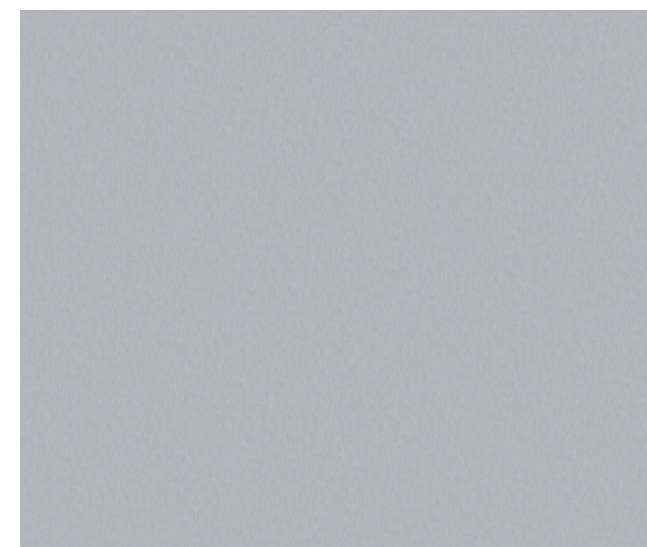
DP002 ■ N



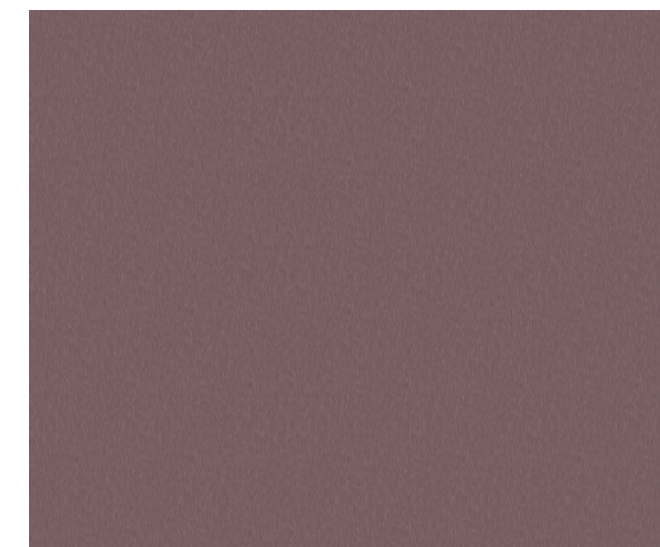
DP003 ■ N



DP004 ■ N



DP005 ■ N



DP006 ■ N

※ 제품이 보는 방향에 따라 색상이 다르게 보이므로 정확한 색상 확인을 원하실 경우, 구매 전 실제 제품을 확인해 보세요.
 ※ The product's color can appear different depending on the viewing angle, so it is recommended to check the actual product before purchasing if you want to confirm its accurate color.



원단을 꺼내어 좌우로 움직여 보세요.
빛의 각도에 따라 다채로운 듀얼 효과를 경험해 보실 수 있습니다.

DP005

※ 제품이 보는 방향에 따라 색상이 다르게 보이므로 실제 제품을 확인해 보세요.

※ Please note that the color of the product may vary depending on the viewing angle, so check the actual product.

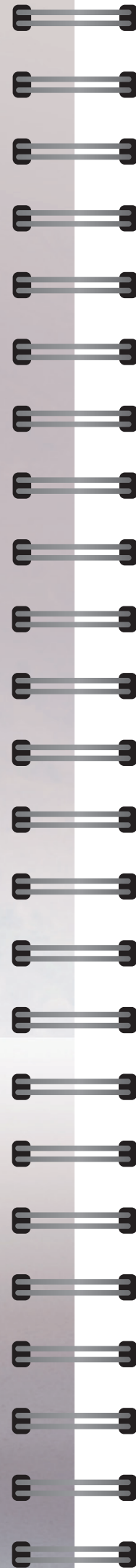


원단을 꺼내어 좌우로 움직여 보세요.
빛의 각도에 따라 다채로운 듀얼 효과를 경험해 보실 수 있습니다.

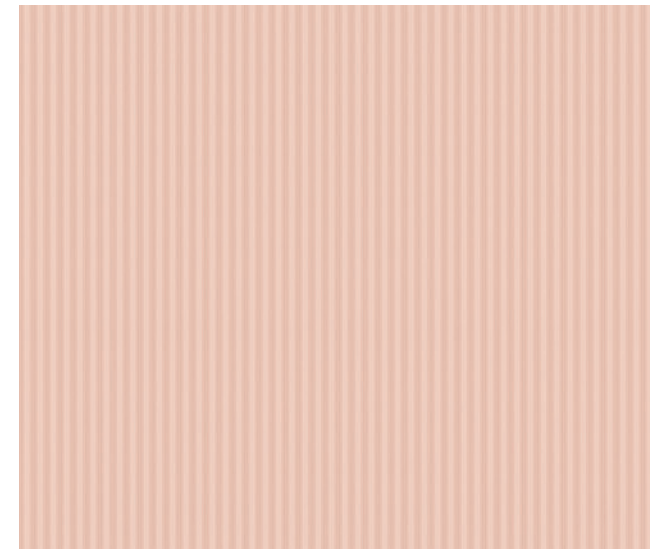
DP002

※ 제품이 보는 방향에 따라 색상이 다르게 보이므로 실제 제품을 확인해 보세요.

※ Please note that the color of the product may vary depending on the viewing angle, so check the actual product.



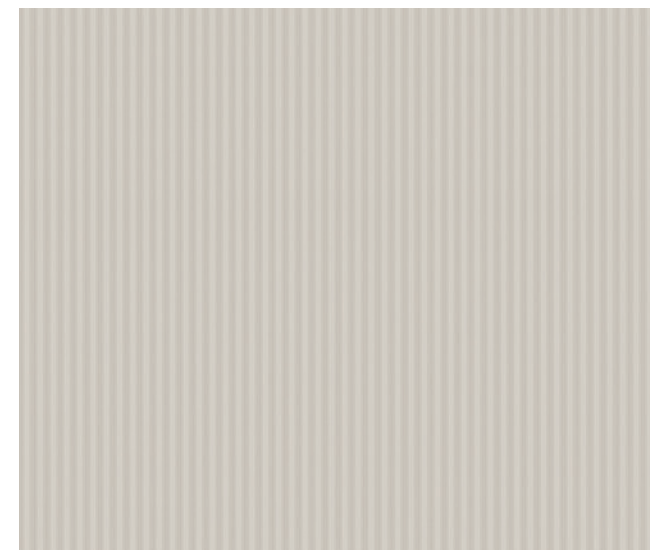
※ 컬러의 단위 무늬(반복 무늬)와 확대 이미지를 On-Line에서 만나보세요.(On-Line 상의 이미지들은 실제 색상과 다를 수 있으니, 실물을 반드시 확인해주세요.)
 ※ Meet the color unit pattern(repeated) and enlarged images online.(Images online may differ from actual colors, please check the actual product.)



NV003 ■ N



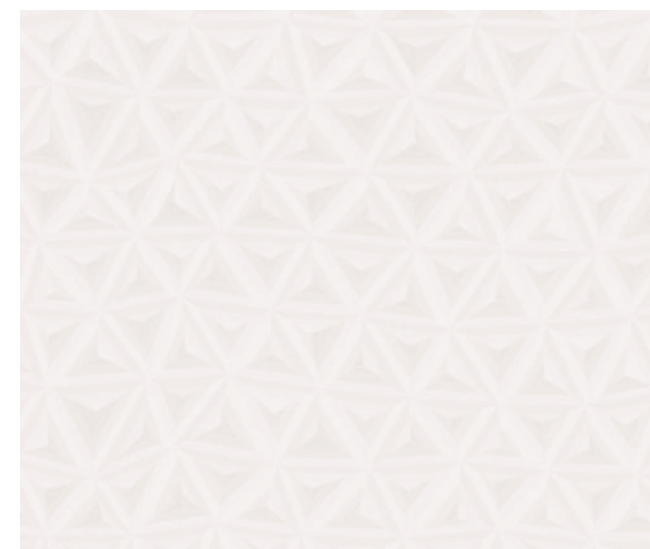
NV004 ■ N



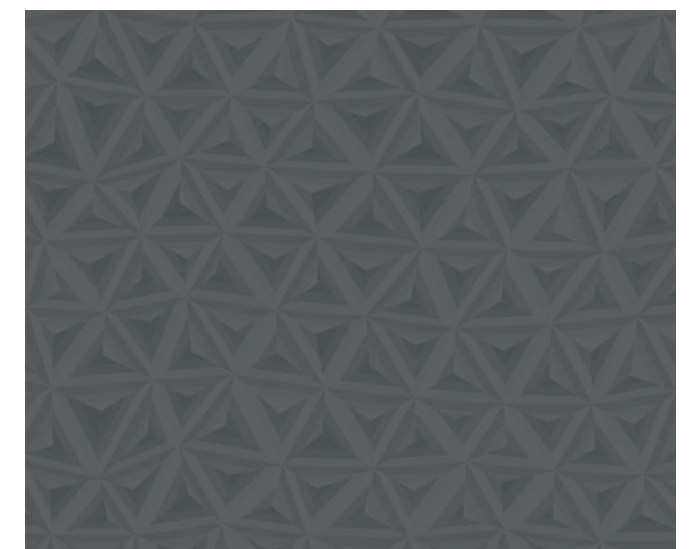
NV001 ■ N



NV002 ■ N



NV005 ■ N



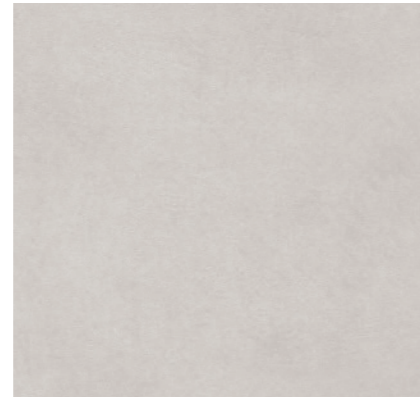
NV006 ■ N

Misty 미스티

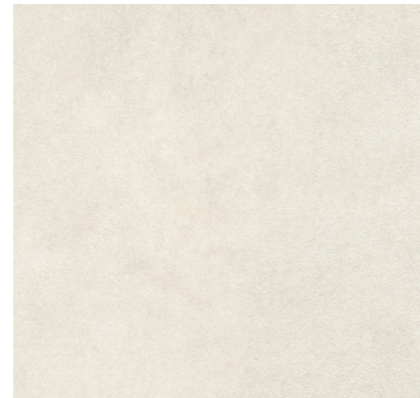
내추럴한 표면 위에 화이트 도장을 한 듯 부드럽고 화사한 분위기를 선사합니다.
 Make a present of soft and fluorescent mood as if white paint was applied on a natural surface.



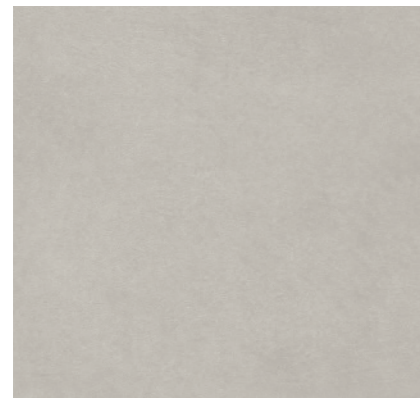
SM001 / SM013 / SM014



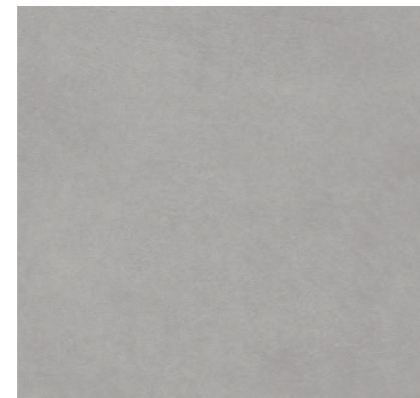
SM013 ■ N ④



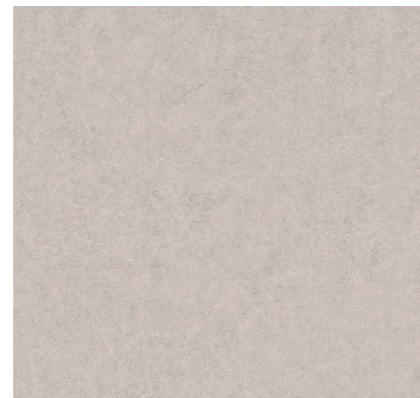
SM005 ■



SM014 ■ N ④



SM015 ■ N



SM006 ■



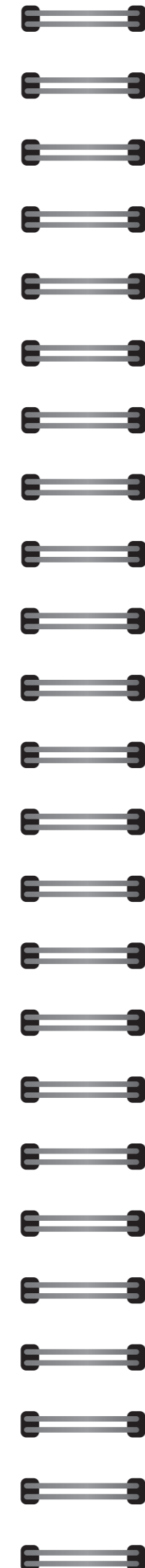
SM016 ■ N



SM008 ■



SM007 ■



※ 컬러의 단위 무늬(반복 무늬)와 확대 이미지를 On-Line에서 만나보세요.(On-Line 상의 이미지들은 실제 색상과 다를 수 있으니, 실물을 반드시 확인해주세요.)
 ※ Meet the color unit pattern(repeated) and enlarged images online.(Images online may differ from actual colors, please check the actual product.)



SM001 ■ ④



SM002 ■



SM003 ■



SM009 ■ N ④



SM011 ■ N



SM009



SM010 ■ N



SM012 ■ N

※ We notice that pattern and color of the product in the above image might differ from the actual product.

Emboss 엠보스

은은하게 반사되는 텍스처와 다채로운 색감이 만나 온기를 더합니다.
 The delicately reflective texture and colorful colors increase warmth.



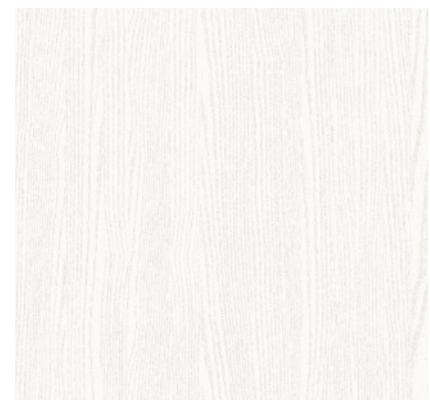
RGM05

※ 상기 이미지 간의 제품 패턴과 색상은 실제 제품과 차이가 있을 수 있음을 알려드립니다.

※ 상기 이미지 간의 제품 패턴과 색상은 실제 제품과 차이가 있을 수 있음을 알려드립니다.



RS170



RS174



RS116



RS104



RS105



RS170



RS173



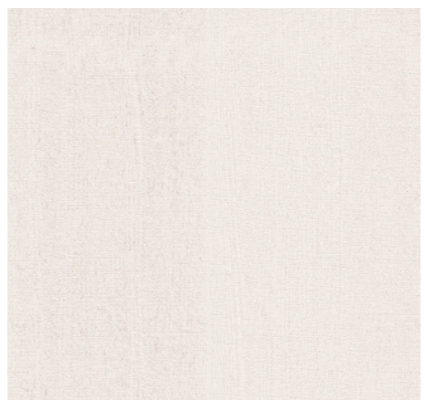
RS103



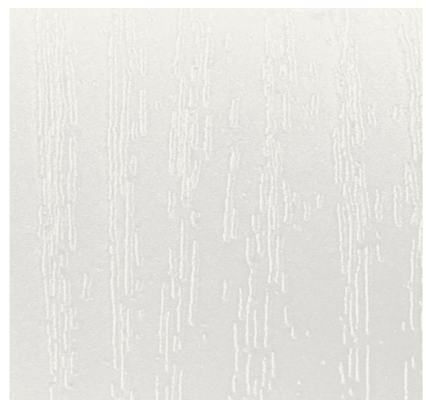
RS175



RSJD1



RS98



RSP01



RS98 / RS150



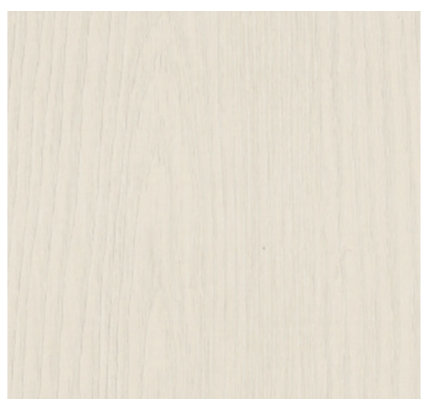
RS150



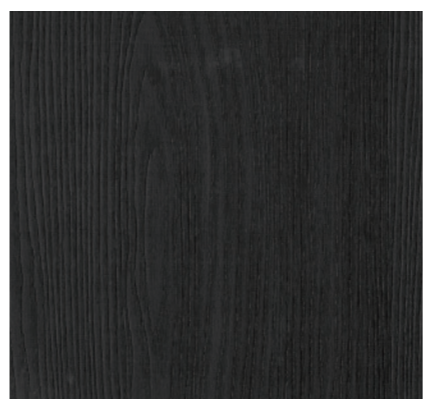
RS151



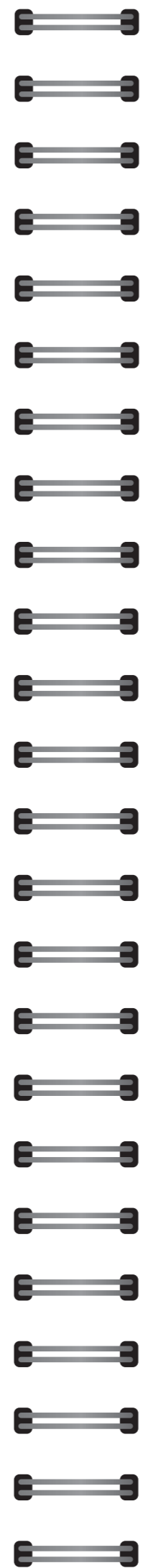
RS106



RS107



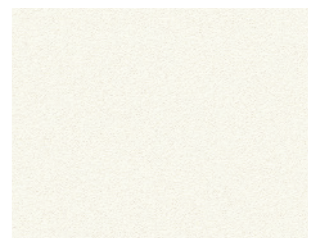
RS108



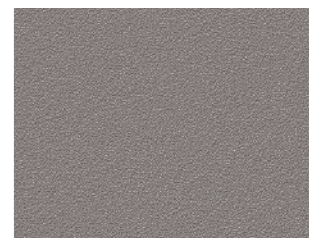
※ 컬러의 단위 무늬(반복 무늬)와 확대 이미지를 On-Line에서 만나보세요.(On-Line 상의 이미지는 실제 색상과 다를 수 있으니, 실물을 반드시 확인해주세요.)
 ※ Meet the color unit pattern(repeated) and enlarged images online.(Images online may differ from actual colors, please check the actual product.)



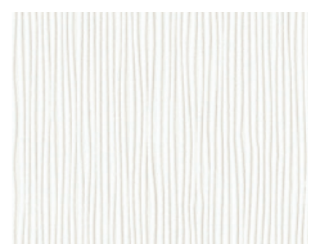
RS101



RS160



RS162



RS159



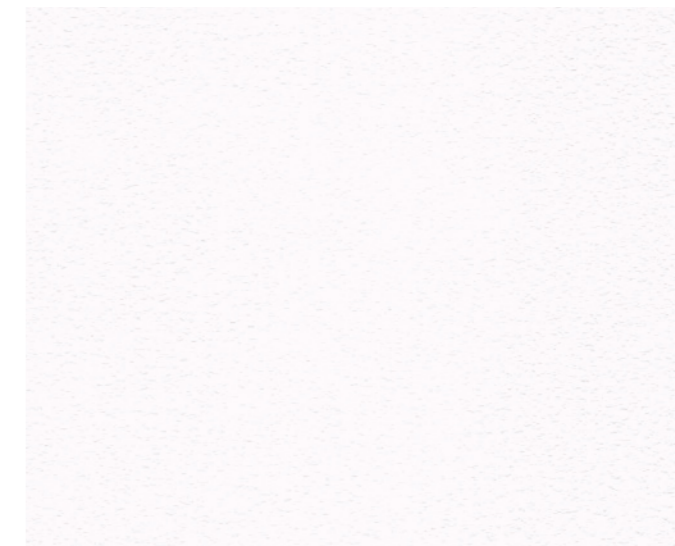
RS161



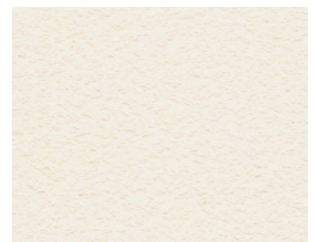
RS144



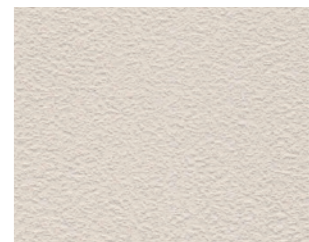
RS145



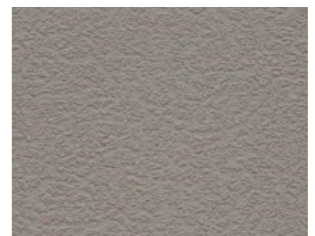
RS138



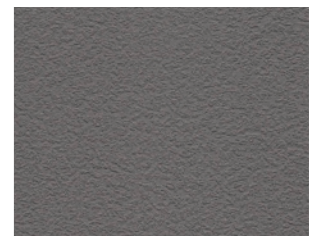
RS139



RS140

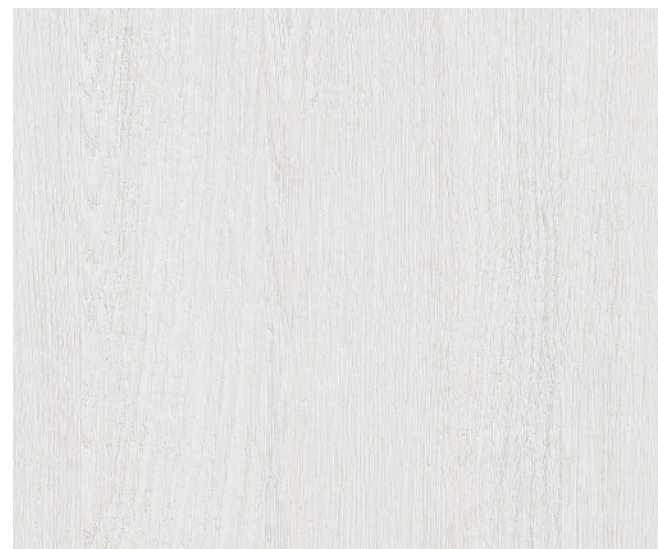


RS141



RS142

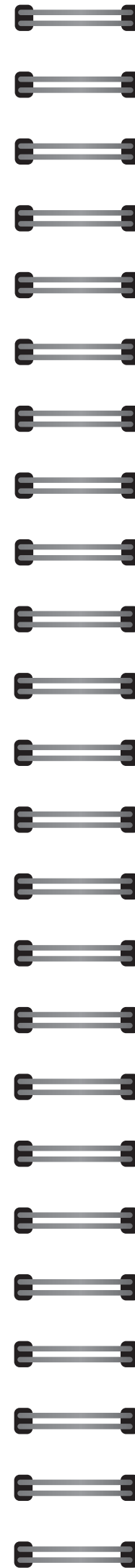
※ We notice that pattern and color of the product in the above image might differ from the actual product.



RGM12 ■ ■ ■ N



RGM14 ■ ■ ■ N



※ 컬러의 단위 무늬(반복 무늬)와 확대 이미지를 On-Line에서 만나보세요.(On-Line 상의 이미지들은 실제 색상과 다를 수 있으니, 실물을 반드시 확인해보세요.)
 ※ Meet the color unit pattern(repeated) and enlarged images online.(Images online may differ from actual colors, please check the actual product.)



RGM05 ■ ■ ■



RGM13 ■ ■ ■ N



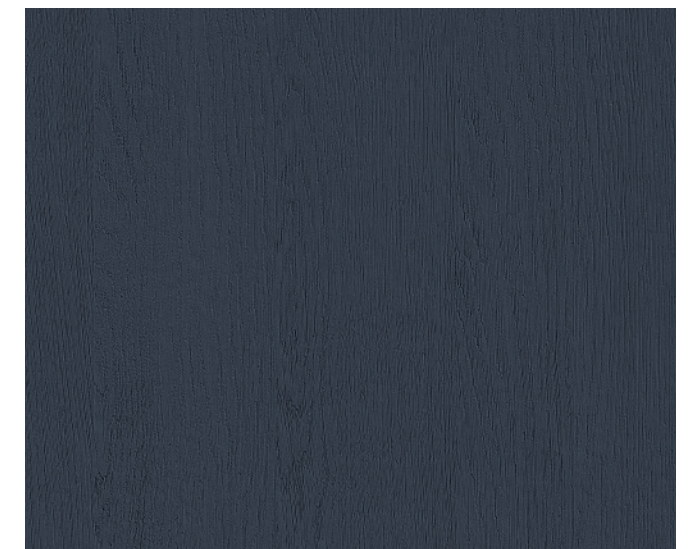
RGM03 ■ ■ ■



RGM02 ■ ■ ■



RGM15 ■ ■ ■ N



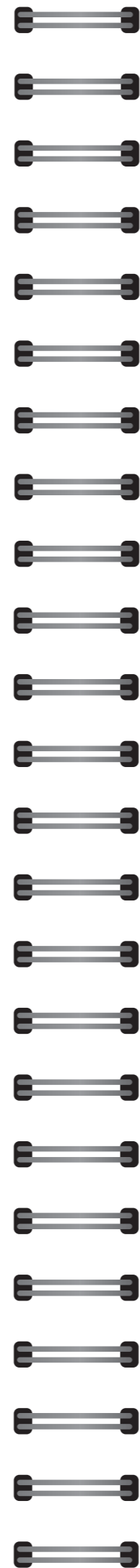
RGM16 ■ ■ ■ N

※ We notice that pattern and color of the product in the above image might differ from the actual product.

Solid 솔리드



※ 상기 이미지 안의 제품 패턴과 색상은 실제 제품과 차이가 있을 수 있음을 알려드립니다.



※ 컬러의 단위 무늬(반복 무늬)와 확대 이미지들을 On-Line에서 만나보세요.(On-Line 상의 이미지들은 실제 색상과 다를 수 있으니, 실물을 반드시 확인해주세요.)
※ Meet the color unit pattern(repeated) and enlarged images online.(Images online may differ from actual colors, please check the actual product.)



※ We notice that pattern and color of the product in the above image might differ from the actual product.

Metal 메탈

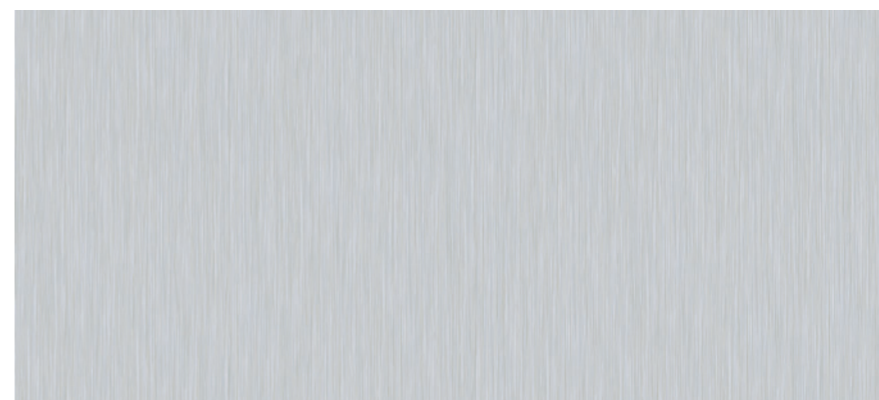
화려한 느낌의 메탈은 세련되고 럭셔리한 공간을 완성합니다.
Gorgeous metal completes refined and luxurious space.



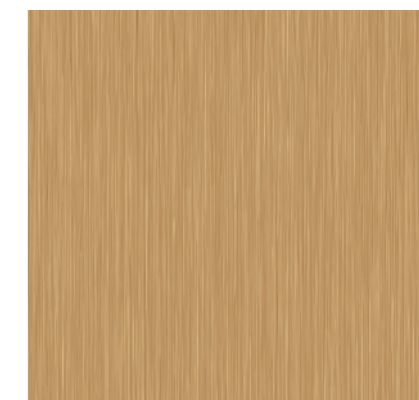
PME05 / PME06

※ 상기 이미지 안의 제품 패턴과 색상은 실제 제품과 차이가 있을 수 있음을 알려드립니다.

※ 컬러의 단위 무늬(반복 무늬)와 확대 이미지를 On-Line에서 만나보세요.(On-Line 상의 이미지들은 실제 색상과 다를 수 있으니, 실물을 반드시 확인해보세요.)
※ Meet the color unit pattern(repeated) and enlarged images online.(Images online may differ from actual colors, please check the actual product.)



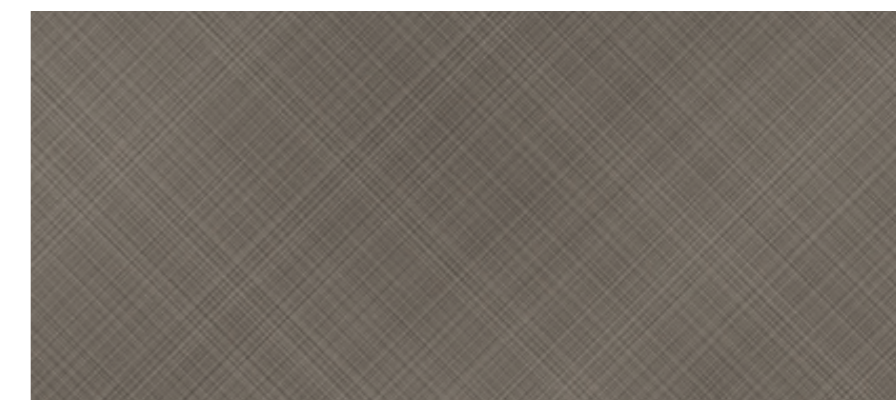
PME01 ■ ▲



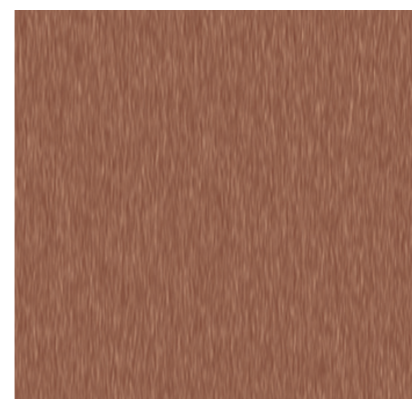
PME02 ■ ▲



PME06 ■ ● ▲



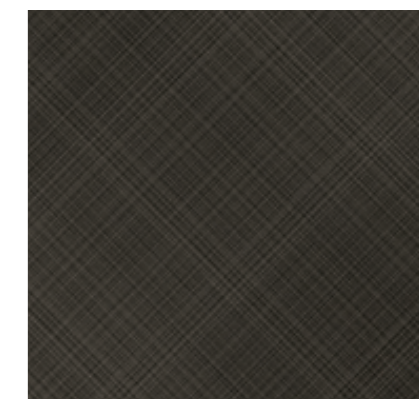
PME08 ■ ▲



PME04 ■ ▲



PME09 ■ ▲



PME07 ■ ▲



PME10 ■ ▲



PME03 ■ ▲



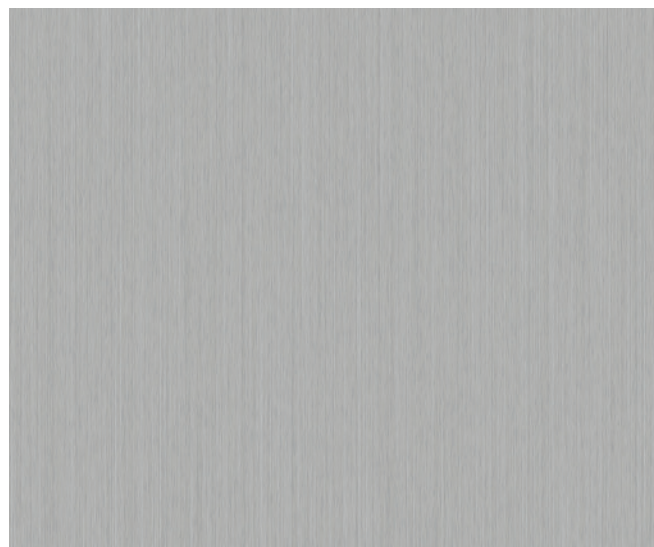
PME05 ■ ● ▲

※ We notice that pattern and color of the product in the above image might differ from the actual product.

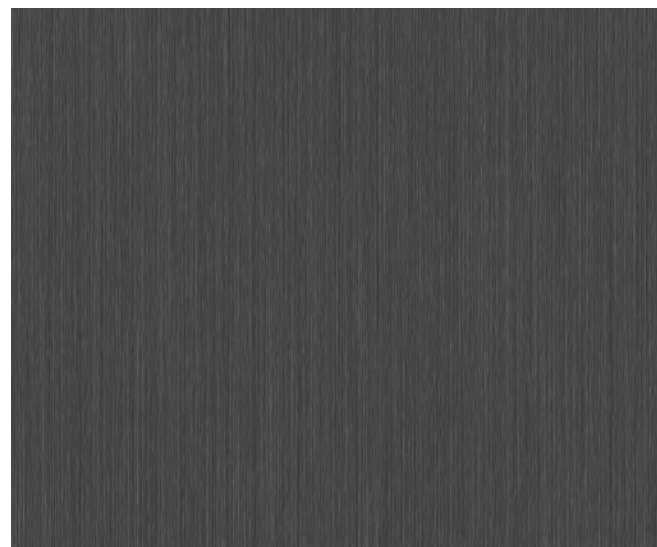
Metal 메탈



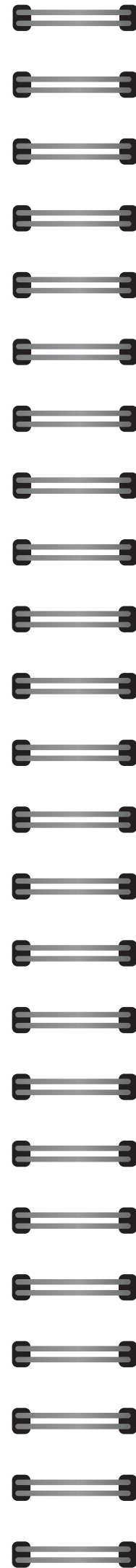
RP56



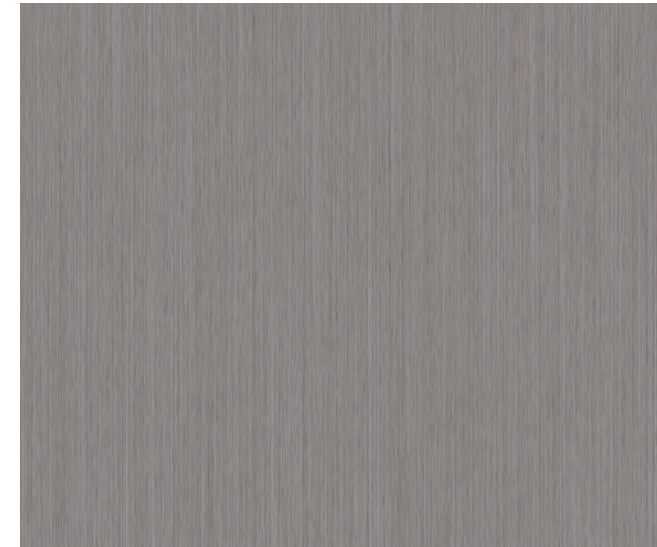
RP57 ■ ■ ■ N



RP56 ■ ■ ■ N



※ 컬러의 단위 무늬(반복 무늬)와 확대 이미지를 On-Line에서 만나보세요.(On-Line 상의 이미지들은 실제 색상과 다를 수 있으니, 실물을 반드시 확인해보세요.)
 ※ Meet the color unit pattern(repeated) and enlarged images online.(Images online may differ from actual colors, please check the actual product.)



RP54 ■ ■ ■ N



RP55 ■ ■ ■ N



RP54

※ We notice that pattern and color of the product in the above image might differ from the actual product.

Metal 메탈

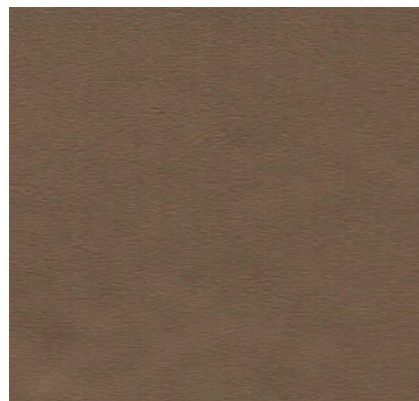
MS21 ■ ■ ■



MS18 ■ ■ ■



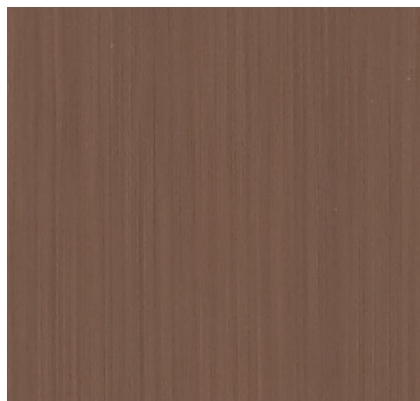
MS09 ■ ■ ■



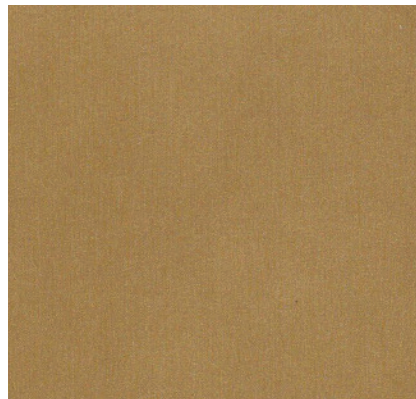
RP47 ■ ■ ■



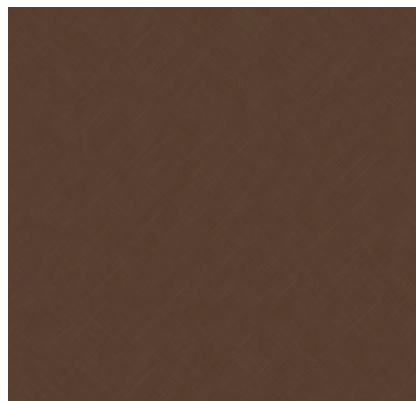
RP48 ■ ■ ■



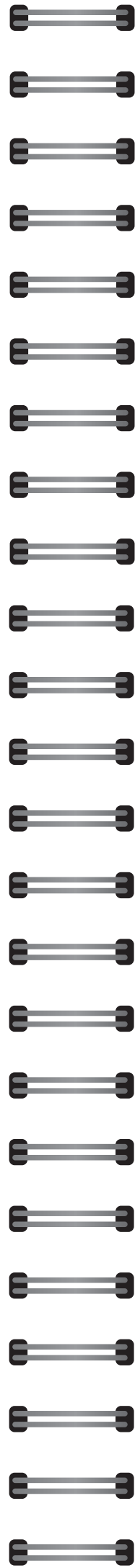
RP45 ■ ■ ■



RP06 ■ ■ ■



RP52 ■ ■ ■



※ 컬러의 단위 무늬(반복 무늬)와 확대 이미지를 On-Line에서 만나보세요.(On-Line 상의 이미지들은 실제 색상과 다를 수 있으니, 실물을 반드시 확인해보세요.)
 ※ Meet the color unit pattern(repeated) and enlarged images online.(Images online may differ from actual colors, please check the actual product.)



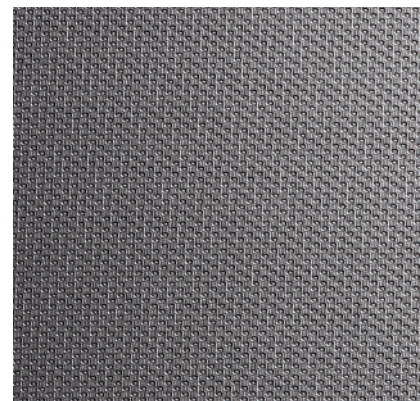
MS01 ■ ■ ■



RP04 ■ ■ ■



MS20 ■ ■ ■



RP53 ■ ■ ■

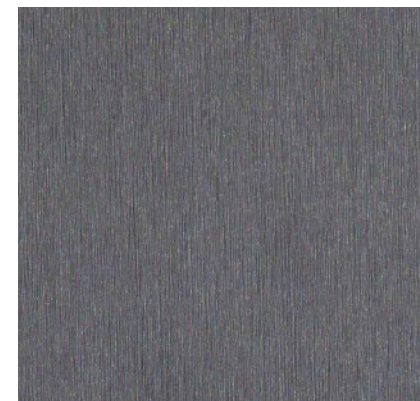
MS19 ■ ■ ■



RP42 ■ ■ ■



RP46 ■ ■ ■



RP50 ■ ■ ■

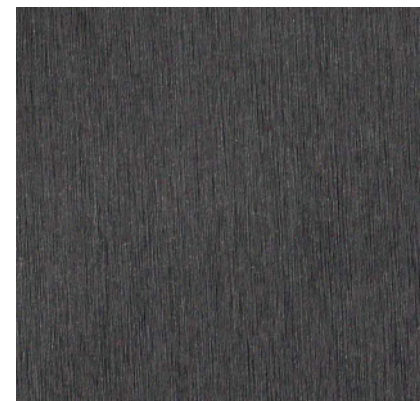
RP08 ■ ■ ■



RP03 ■ ■ ■



RP49 ■ ■ ■

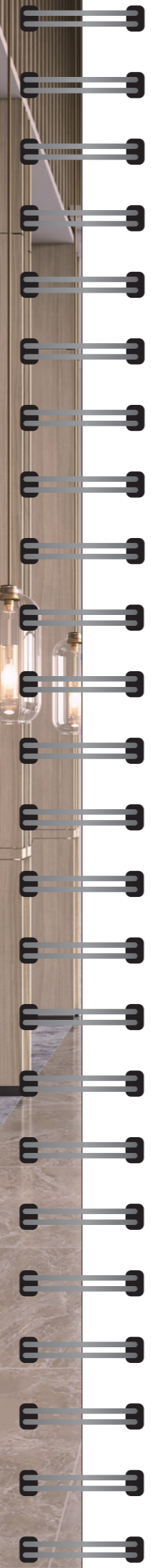


RP51 ■ ■ ■

※ We notice that pattern and color of the product in the above image might differ from the actual product.

Classic Wood 클래식 우드

나무보다 더 나무답게, 나무의 부드러운 숨결을 공간 안에 가득 담습니다.
More being like a tree than a tree. Put its soft breath in the full of space.



※ 컬러의 단위 무늬(반복 무늬)와 확대 이미지를 On-Line에서 만나보세요.(On-Line 상의 이미지들은 실제 색상과 다를 수 있으니, 실물을 반드시 확인하세요.)
 ※ Meet the color unit pattern(repeated) and enlarged images online.(Images online may differ from actual colors, please check the actual product.)



PW141 ■ N A

Soft Walnut



PW142 ■ N A

Soft Walnut



PW143 ■ N A

Soft Walnut

Classic Wood 클래식 우드



PW116 ■ ▲

Standard Oak



PW126 ■ ▲

Aiguille Oak



PW129 ■ ▲

Aiguille Oak



PW123 ■ ● ▲

Walnut



PW117 ■ ▲

Standard Oak



PW136 ■ ▲

Eiche



PW127 ■ ▲

Aiguille Oak



PW113 ■ ▲

Slap Oak



PW123

※ 상기 이미지 안의 제품 패턴과 색상은 실제 제품과 차이가 있을 수 있음을 알려드립니다.

※ 컬러의 단위 무늬(반복 무늬)와 확대 이미지들을 On-Line에서 만나보세요.(On-Line 상의 이미지들은 실제 색상과 다를 수 있으니, 실물을 반드시 확인해주세요.)
 ※ Meet the color unit pattern(repeated) and enlarged images online.(Images online may differ from actual colors, please check the actual product.)



※ We notice that pattern and color of the product in the above image might differ from the actual product.

Classic Wood 클래식 우드



PW105 ■ ● ▲

Teak



PW109 ■ ● ▲

Ash



PW130 ■ ▲

Aiguille Oak



PW139 ■ ▲

Olive Ash



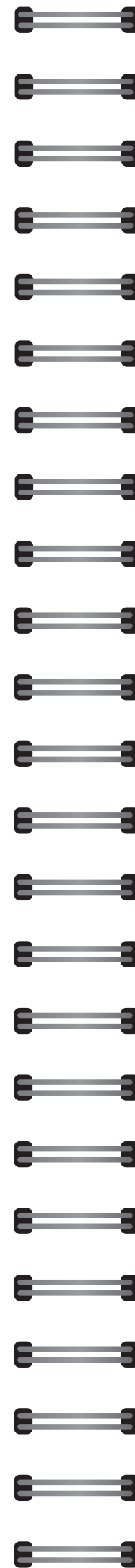
PW106 ■ ▲

Teak



PW110 ■ ● ▲

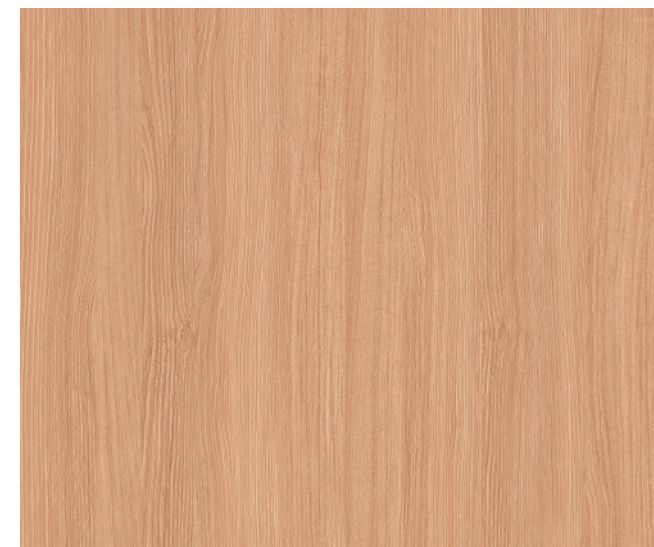
Ash



※ 컬러의 단위 무늬(반복 무늬)와 확대 이미지를 On-Line에서 만나보세요.(On-Line 상의 이미지들은 실제 색상과 다를 수 있으니, 실물을 반드시 확인해보세요.)
 ※ Meet the color unit pattern(repeated) and enlarged images online.(Images online may differ from actual colors, please check the actual product.)



PW105



PW133 ■ ● ▲

Danish Teak



PW131 ■ ● ▲

Aiguille Oak

※ We notice that pattern and color of the product in the above image might differ from the actual product.

Classic Wood 클래식 우드



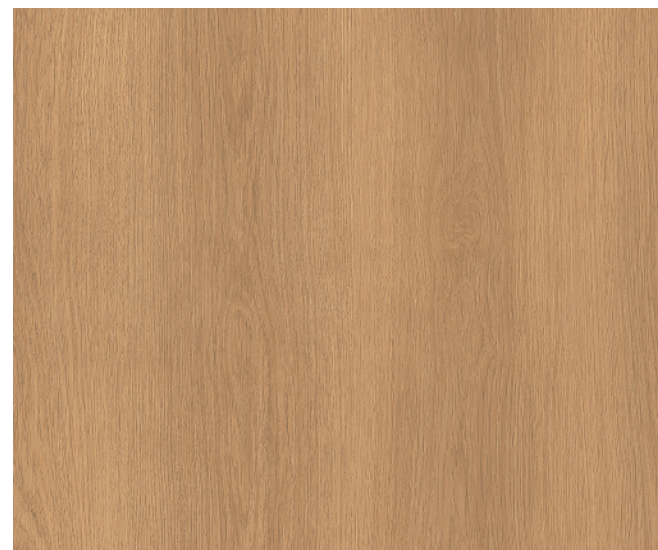
PW137 ■ ▲

Eiche



PW118 ■ ● ▲

Standard Oak



PW119 ■ ▲

Standard Oak



PW140 ■ ▲

Olive Ash



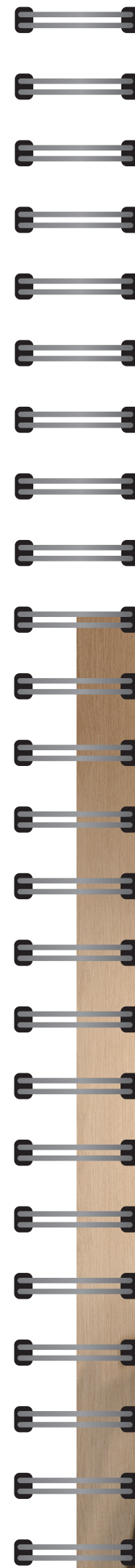
PW102 ■ ▲

Oak



PW101 ■ ▲

Oak



※ 컬러의 단위 무늬(반복 무늬)와 확대 이미지를 On-Line에서 만나보세요.(On-Line 상의 이미지들은 실제 색상과 다를 수 있으니, 실물을 반드시 확인해주세요.)
 ※ Meet the color unit pattern(repeated) and enlarged images online.(Images online may differ from actual colors, please check the actual product.)



PW132 ■ ▲

Danish Teak



PW114 ■ ▲

Slap Oak



PW118

※ We notice that pattern and color of the product in the above image might differ from the actual product.



PW134



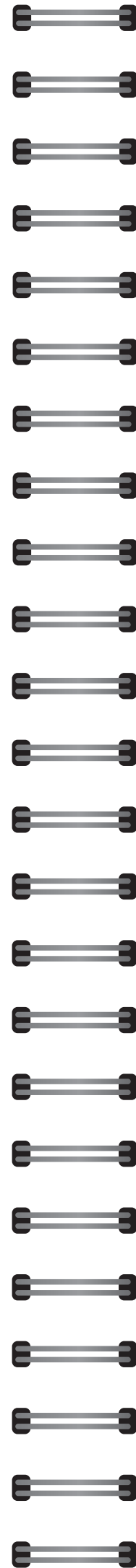
PW103 ■ ▲

Oak



PW134 ■ ● ▲

Danish Teak



※ 컬러의 단위 무늬(반복 무늬)와 확대 이미지를 On-Line에서 만나보세요.(On-Line 상의 이미지들은 실제 색상과 다를 수 있으니, 실물을 반드시 확인해보세요.)
 ※ Meet the color unit pattern(repeated) and enlarged images online.(Images online may differ from actual colors, please check the actual product.)



PW107 ■ ▲

Teak



PW121 ■ ▲

Standard Oak



PW108 ■ ▲

Teak



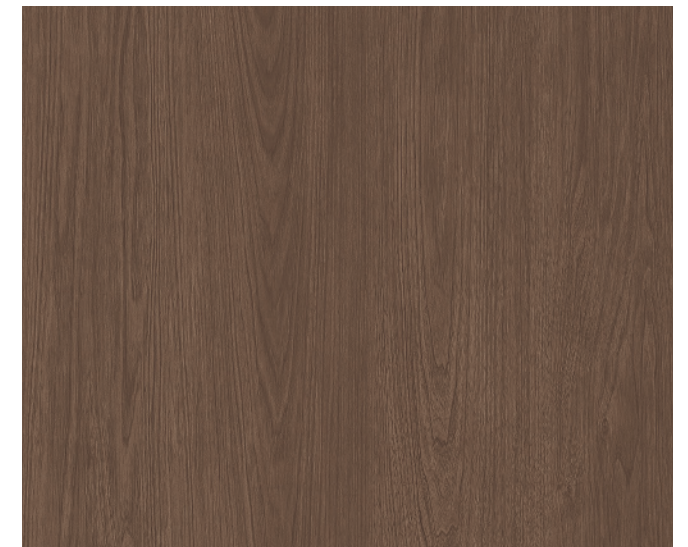
PW124 ■ ▲

Walnut



PW115 ■ ▲

Slap Oak



PW125 ■ ▲

Walnut

※ We notice that pattern and color of the product in the above image might differ from the actual product.

Classic Wood 클래식 우드



PW138 ■ ▲

Olive Ash



PW111 ■ ▲

Ash



PW112 ■ ▲

Ash



PW128 ■ ▲

Aiguille Oak



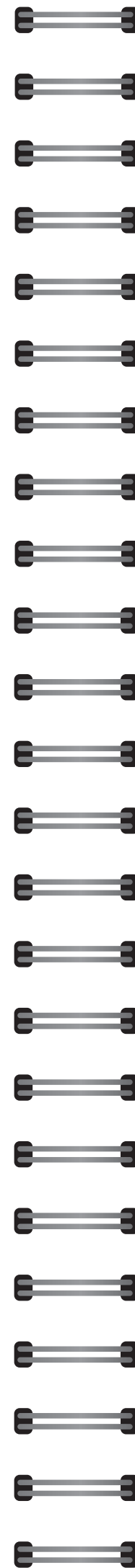
PW120 ■ ▲

Standard Oak



PW104 ■ ▲

Oak

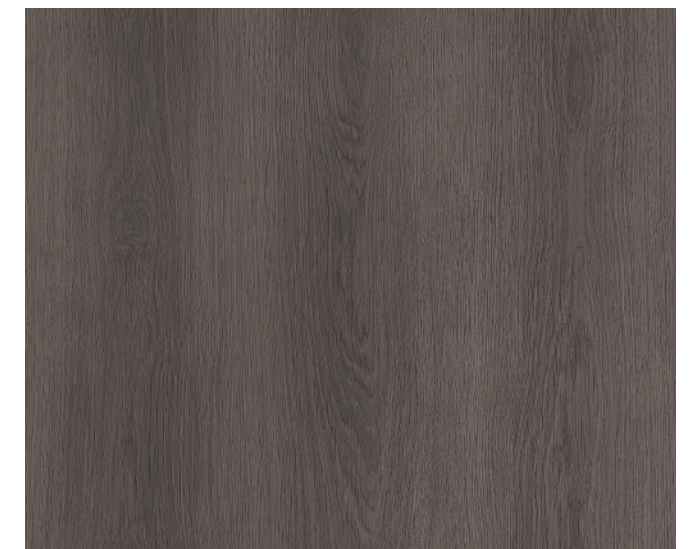


※ 컬러의 단위 무늬(반복 무늬)와 확대 이미지를 On-Line에서 만나보세요.(On-Line 상의 이미지들은 실제 색상과 다를 수 있으니, 실물을 반드시 확인해보세요.)
 ※ Meet the color unit pattern(repeated) and enlarged images online.(Images online may differ from actual colors, please check the actual product.)



PW135 ■ ● ▲

Danish Teak



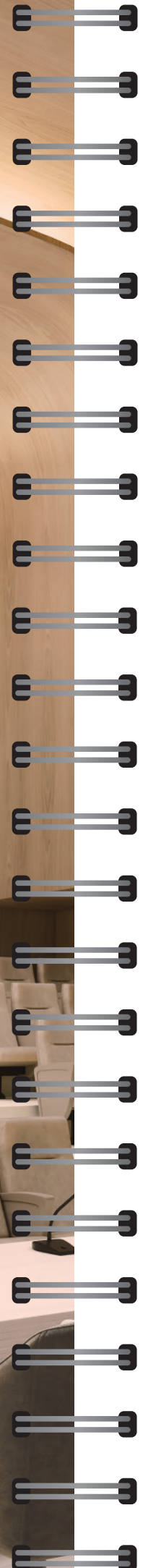
PW122 ■ ▲

Standard Oak

※ We notice that pattern and color of the product in the above image might differ from the actual product.

Big Wood 빅우드

우드 슬랩의 커다랗고 웅장한 나이테, 길게 뻗은 나뭇결을 오롯이 느껴보세요.
 Feel the huge and majestic annual rings of the wood slab and the long grain of the wood.



※ 컬러의 단위 무늬(반복 무늬)와 확대 이미지를 On-Line에서 만나보세요.(On-Line 상의 이미지들은 실제 색상과 다를 수 있으니, 실물을 반드시 확인해보세요.)
 ※ Meet the color unit pattern(repeated) and enlarged images online.(Images online may differ from actual colors, please check the actual product.)



BW020 ■ N

Walnut



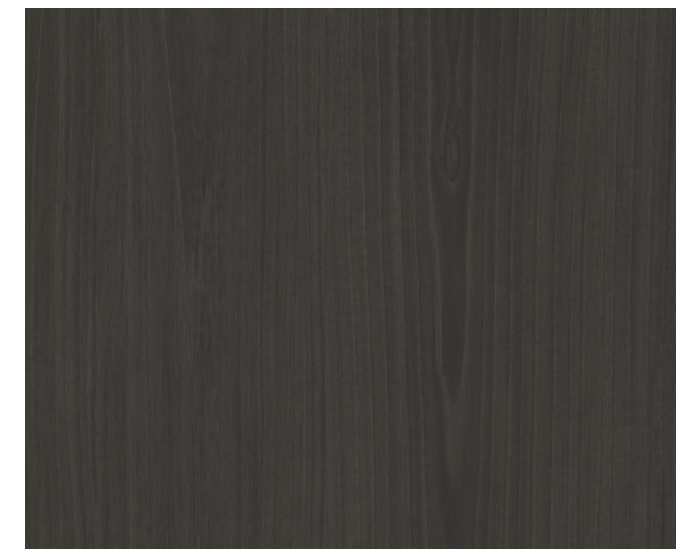
BW021 ■ N ©

Walnut



BW023 ■ N

Walnut



BW022 ■ N

Walnut

※ We notice that pattern and color of the product in the above image might differ from the actual product.

Big Wood 빅 우드

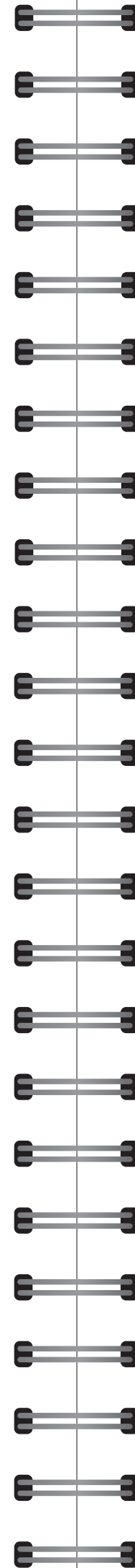


BW017



BW016 ■ N

Teak

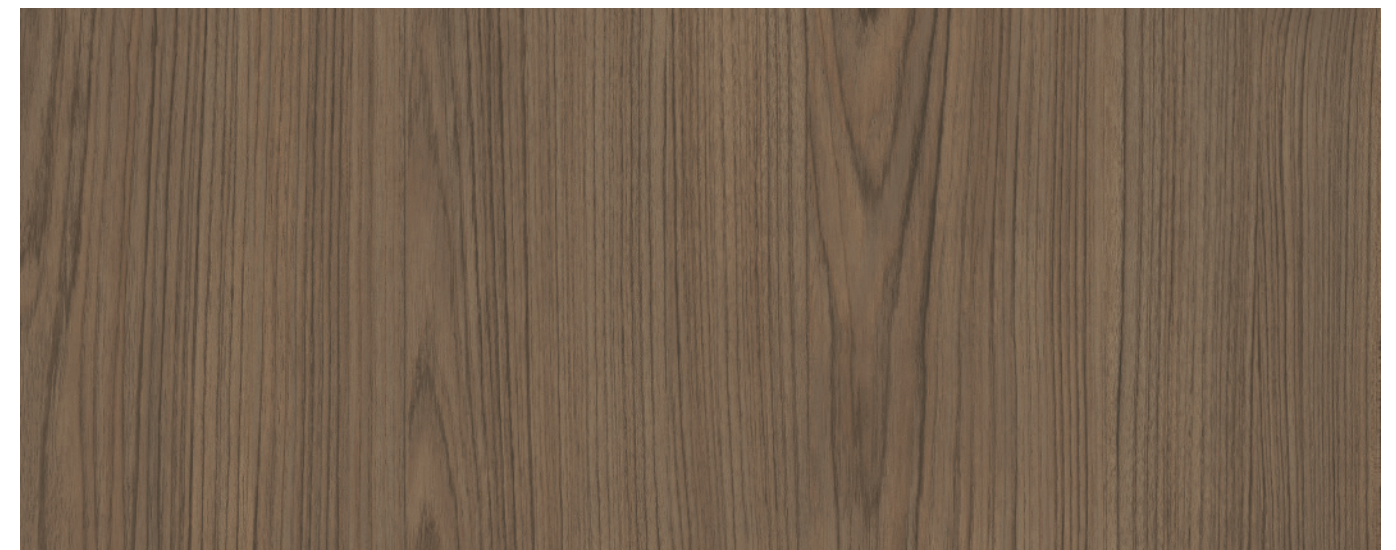


※ 컬러의 단위 무늬(반복 무늬)와 확대 이미지를 On-Line에서 만나보세요.(On-Line 상의 이미지들은 실제 색상과 다를 수 있으니, 실물을 반드시 확인해보세요.)
 ※ Meet the color unit pattern(repeated) and enlarged images online.(Images online may differ from actual colors, please check the actual product.)



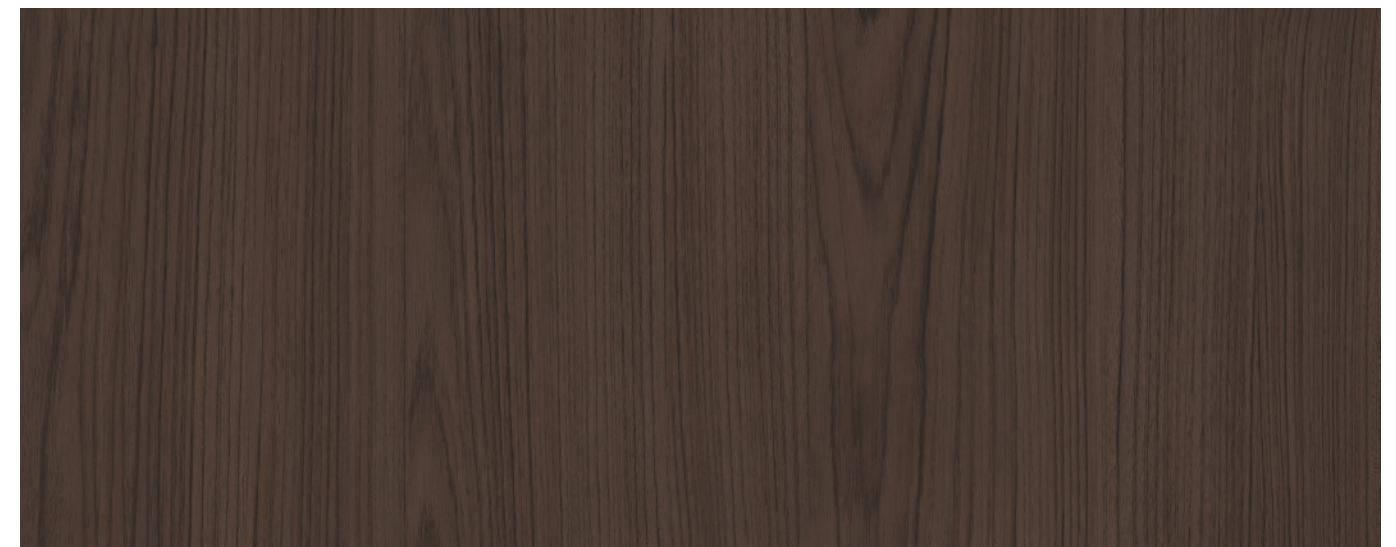
BW017 ■ N

Teak



BW018 ■ N

Teak



BW019 ■ N

Teak

※ We notice that pattern and color of the product in the above image might differ from the actual product.

Big Wood 빅우드



BW001 ■



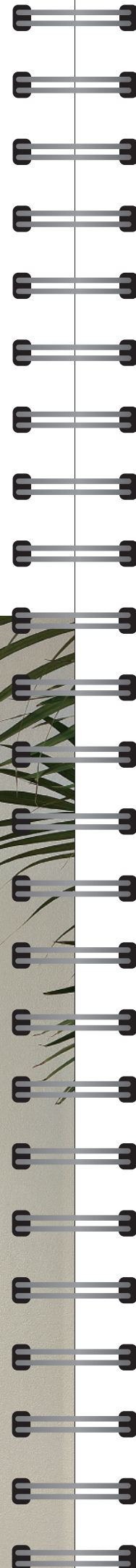
BW007 ■ Antique Oak



DR'S SOLUTION

BW001

※ 상지 이미지 만의 예를 패턴과 색상은 실제 제품과 차이가 있을 수 있음을 알려드립니다.



※ 컬러의 단위 무늬(반복 무늬)와 확대 이미지를 On-Line에서 만나보세요.(On-Line 상의 이미지들은 실제 색상과 다를 수 있으니, 실물을 반드시 확인해보세요.)
 ※ Meet the color unit pattern(repeated) and enlarged images online.(Images online may differ from actual colors, please check the actual product.)



BW010 ■ Lauan



BW005 ■ Oak



BW014 ■ Washed Ash



BW013 ■ Lauan



BW015 ■ Washed Ash



BW006 ■ Oak

※ We notice that pattern and color of the product in the above image might differ from the actual product.



BW008



BW002 ■

Walnut

※ 컬러의 단위 무늬(반복 무늬)와 확대 이미지를 On-Line에서 만나보세요.(On-Line 상의 이미지들은 실제 색상과 다를 수 있으니, 실물을 반드시 확인해주세요.)
 ※ Meet the color unit pattern(repeated) and enlarged images online.(Images online may differ from actual colors, please check the actual product.)



BW008 ■

Antique Oak



BW009 ■

Antique Oak



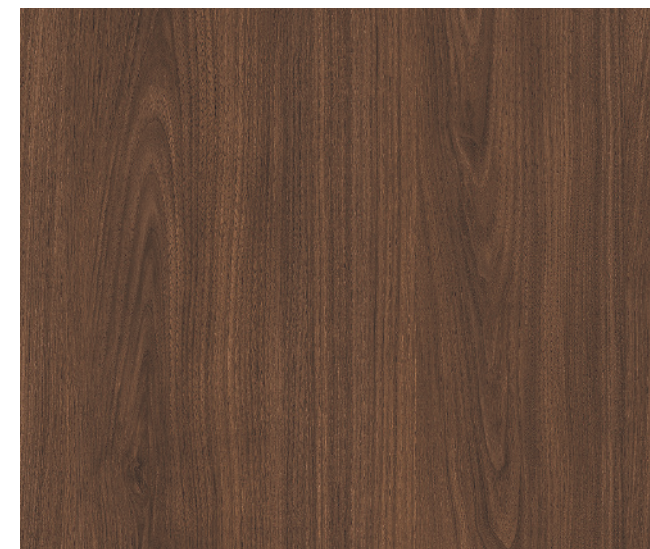
BW004 ■

Oak



BW011 ■

Lauan



BW003 ■

Walnut



BW012 ■

Lauan

Premium Wood 프리미엄 우드

깊이 있고 자연스러운 나뭇결을 있는 그대로 고스란히 담습니다.
Put the deep and natural wood grain into itself as it is.



NW041



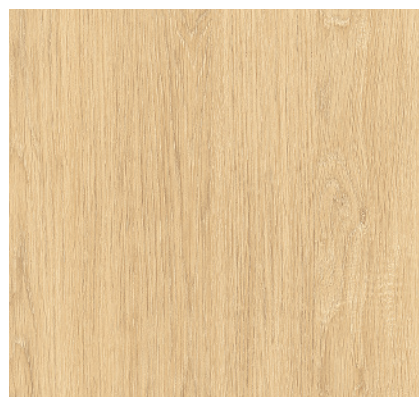
NW102 Oak



NW080 Castagno Cardduci



NW099 Walnut



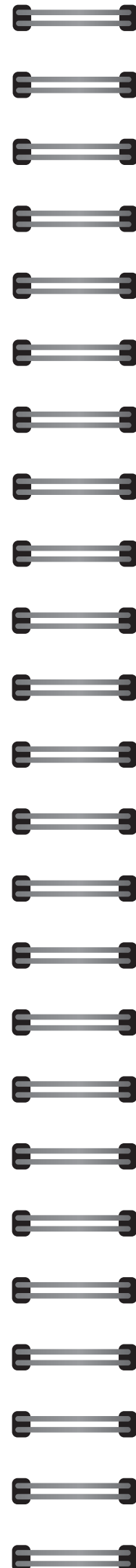
NW041 White Oak



NW112 Ash



NW073 Birch



※ 컬러의 단위 무늬(반복 무늬)와 확대 이미지를 On-Line에서 만나보세요.(On-Line 상의 이미지들은 실제 색상과 다를 수 있으니, 실물을 반드시 확인해주세요.)
※ Meet the color unit pattern(repeated) and enlarged images online.(Images online may differ from actual colors, please check the actual product.)



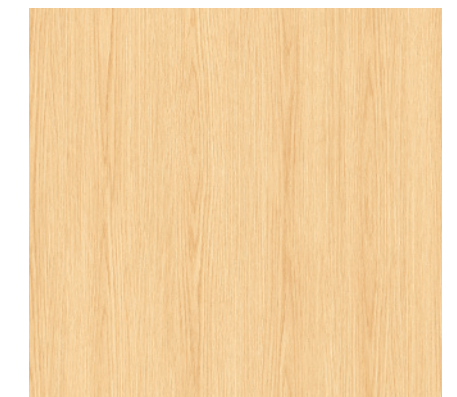
NW078



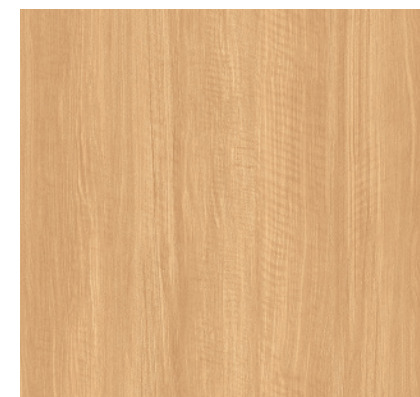
NW071 Maple



NW057 Oak



NW032 Oak



NW078 Teak



NW062 Wizard Grain



NW070 Ash

※ We notice that pattern and color of the product in the above image might differ from the actual product.

Premium Wood 프리미엄 우드



NW014 ■ ■ Oak NW038 ■ ■ Ash NW085 ■ ■ Oak



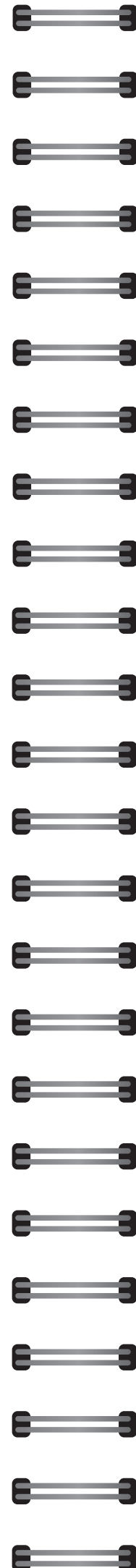
NW033 ■ ■ Oak NW039 ■ ■ Ash



NW088 ■ ■ Teak NW042 ■ ■ White Oak



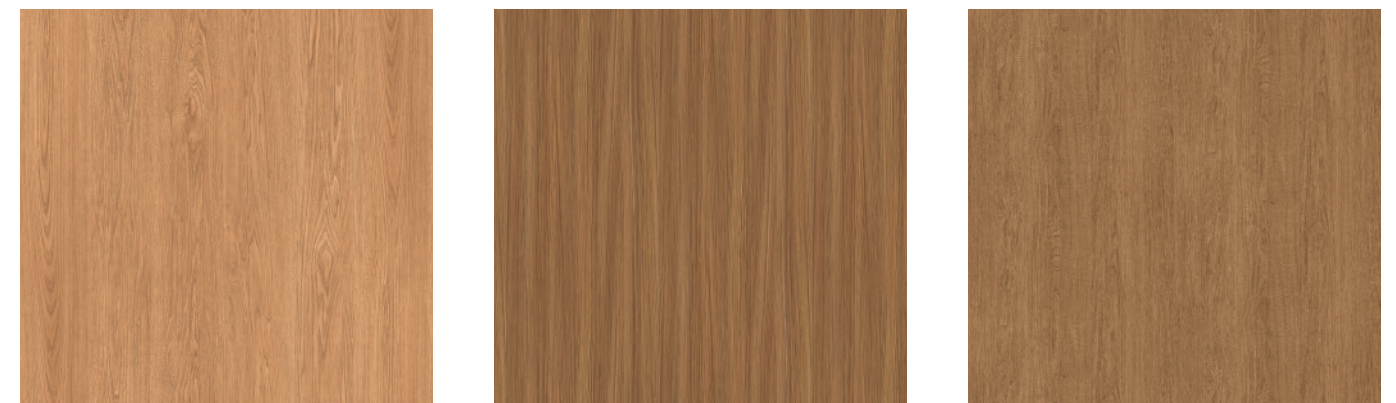
NW006 ■ ■ Amazahoue NW083 ■ ■ Oak NW034 ■ ■ Oak



※ 컬러의 단위 무늬(반복 무늬)와 확대 이미지를 On-Line에서 만나보세요.(On-Line 상의 이미지들은 실제 색상과 다를 수 있으니, 실물을 반드시 확인해주세요.)
 ※ Meet the color unit pattern(repeated) and enlarged images online.(Images online may differ from actual colors, please check the actual product.)



NW072 ■ ■ Teak NW059 ■ ■ Oak NW058 ■ ■ Oak



NW044 ■ ■ Walnut NW067 ■ ■ Teak NW043 ■ ■ White Oak

※ We notice that pattern and color of the product in the above image might differ from the actual product.

※ 상기 이미지 안의 제품 패턴과 색상은 실제 제품과 차이가 있을 수 있음을 알려드립니다.

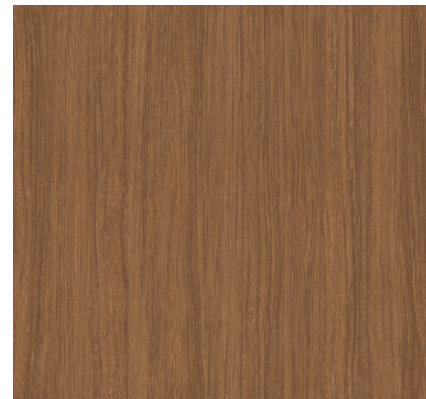
Premium Wood 프리미엄 우드



NW089 Teak



NW045 Walnut



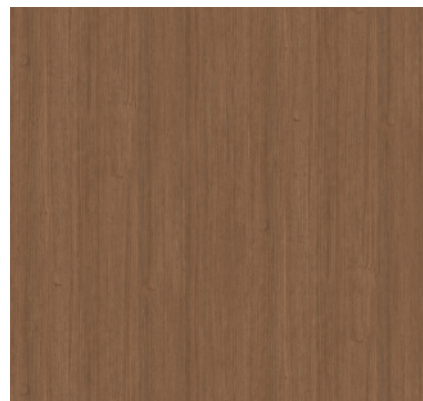
NW007 Amazahoue



NW087 Oak



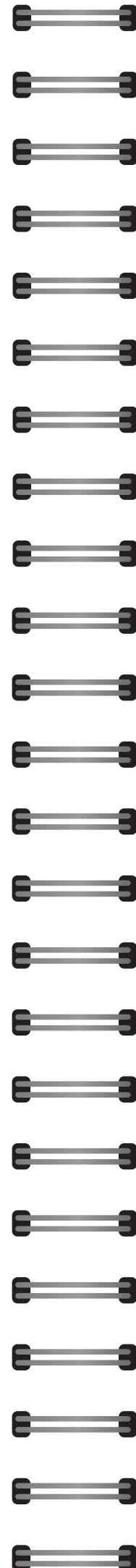
NW060



NW060 Walnut



NW008 Amazahoue



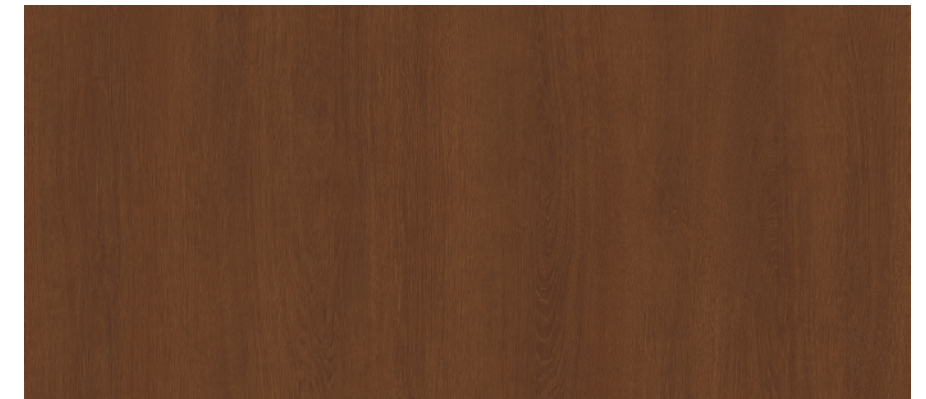
※ 컬러의 단위 무늬(반복 무늬)와 확대 이미지들을 On-Line에서 만나보세요.(On-Line 상의 이미지들은 실제 색상과 다를 수 있으니, 실물을 반드시 확인해보세요.)
 ※ Meet the color unit pattern(repeated) and enlarged images online.(Images online may differ from actual colors, please check the actual product.)



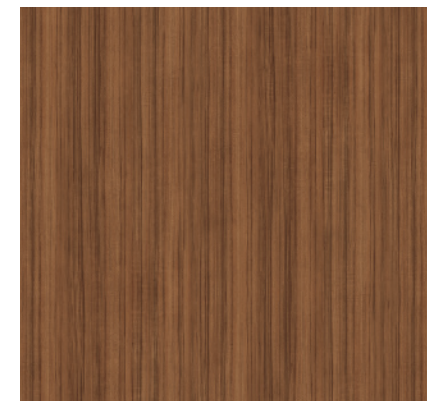
NW104



NW046 Walnut



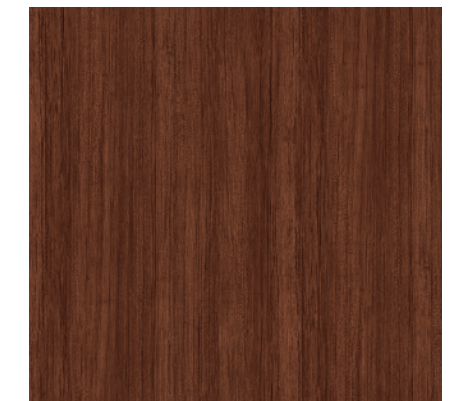
NW104 Oak



NW063 Teak



NW055 Teak

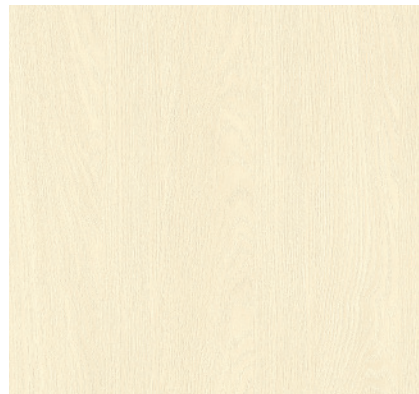


NW090 Teak

Premium Wood 프리미엄 우드



NW114



NW111 ■ ■ ■ Ash



NW110 ■ ■ ■ Teak



NW053 ■ ■ ■ Teak



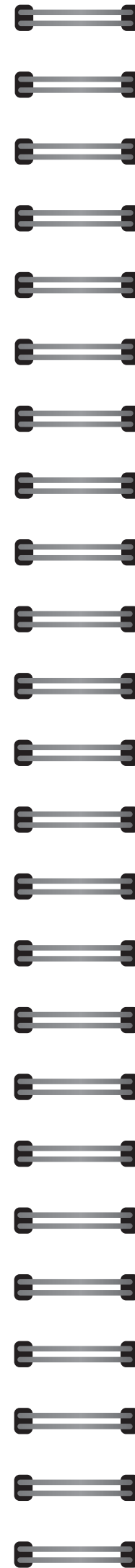
NW114 ■ ■ ■ Ash



NW113 ■ ■ ■ Ash



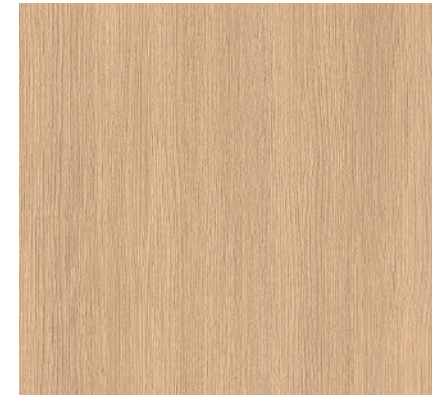
NW082 ■ ■ ■ Oak



※ 컬러의 단위 무늬(반복 무늬)와 확대 이미지를 On-Line에서 만나보세요.(On-Line 상의 이미지들은 실제 색상과 다를 수 있으니, 실물을 반드시 확인해주세요.)
 ※ Meet the color unit pattern(repeated) and enlarged images online.(Images online may differ from actual colors, please check the actual product.)



NW109



NW100 ■ ■ ■ Walnut



NW101 ■ ■ ■ Walnut



NW092 ■ ■ ■ Line Teak



NW086 ■ ■ ■ Oak

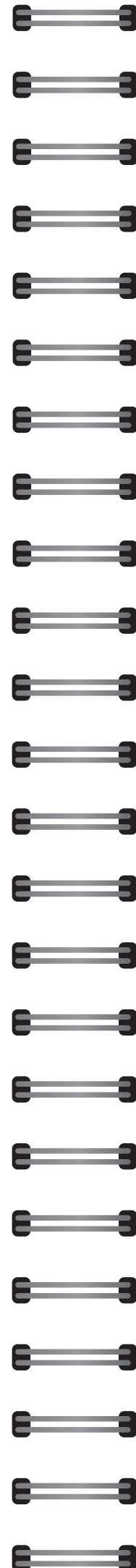
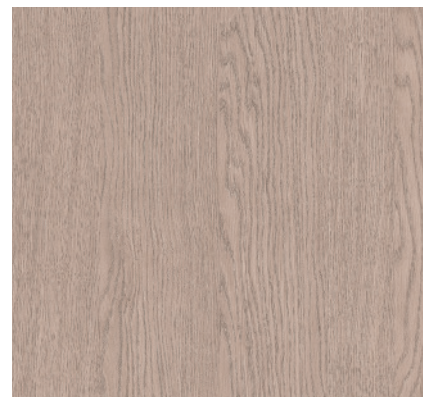


NW109 ■ ■ ■ Teak

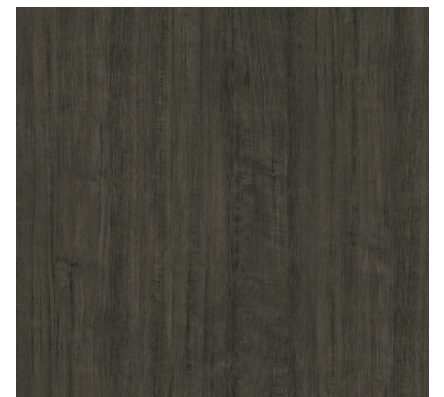


NW084 ■ ■ ■ Oak

※ We notice that pattern and color of the product in the above image might differ from the actual product.

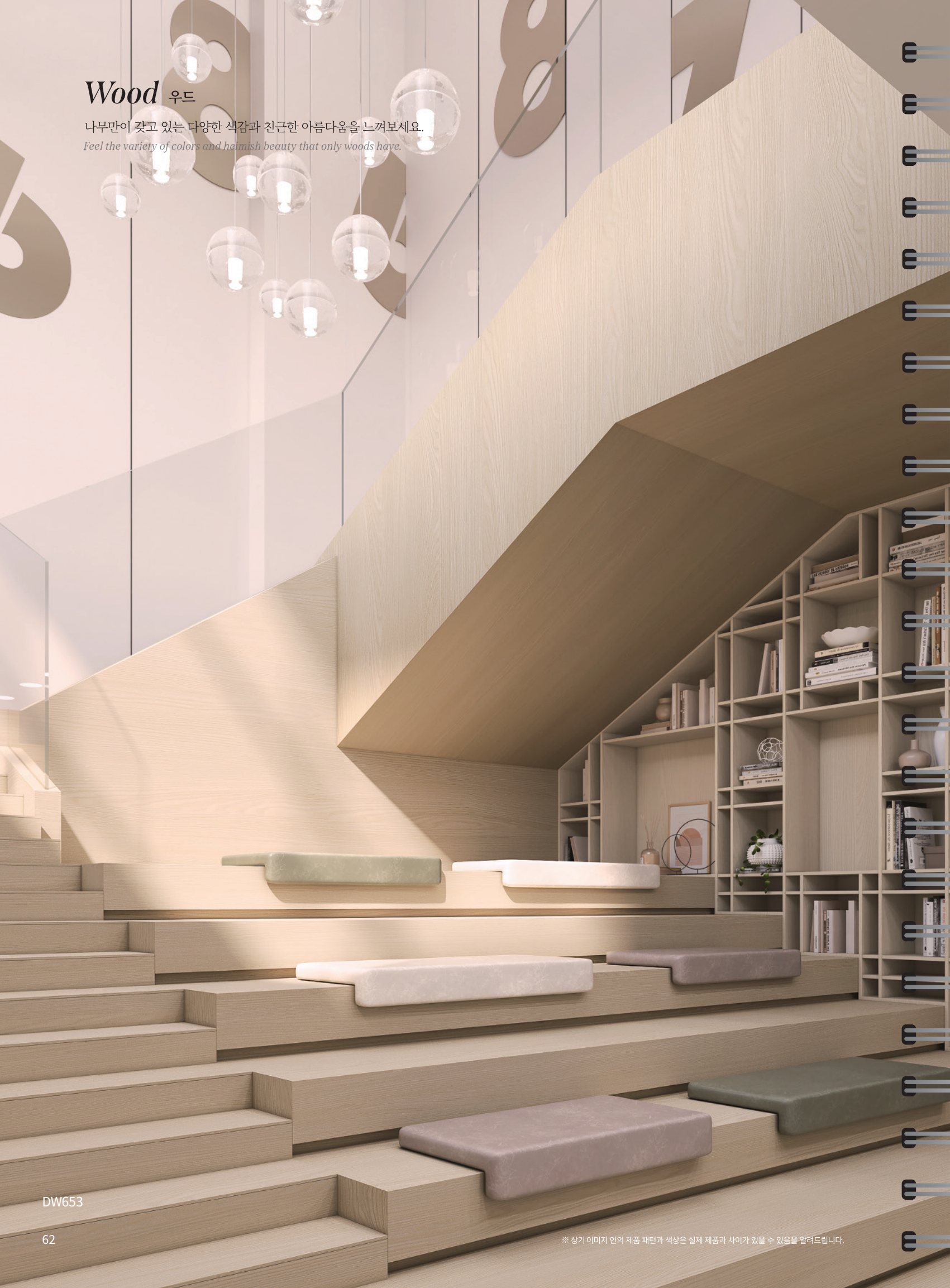


※ 컬러의 단위 무늬(반복 무늬)와 확대 이미지를 On-Line에서 만나보세요.(On-Line 상의 이미지들은 실제 색상과 다를 수 있으니, 실물을 반드시 확인해주세요.)
 ※ Meet the color unit pattern(repeated) and enlarged images online.(Images online may differ from actual colors, please check the actual product.)



Wood 우드

나무만이 갖고 있는 다양한 색감과 친근한 아름다움을 느껴보세요.
 Feel the variety of colors and homish beauty that only woods have.



※ 컬러의 단위 무늬(반복 무늬)와 확대 이미지를 On-Line에서 만나보세요.(On-Line 상의 이미지들은 실제 색상과 다를 수 있으니, 실물을 반드시 확인해보세요.)
 ※ Meet the color unit pattern(repeated) and enlarged images online.(Images online may differ from actual colors, please check the actual product.)



Wood 우드



DW643 ■ ■ Ash



DW639 ■ ■ Ash



CW606 ■ ■



CW611 ■ ■ Ash



CW616 ■ ■ Elm



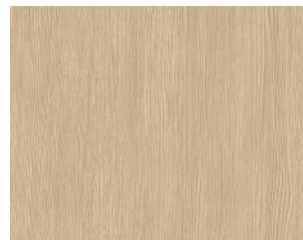
CW390 ■ ■ Walnut



DW635 ■ ■ Ash



CW618 ■ ■ Washed Oak



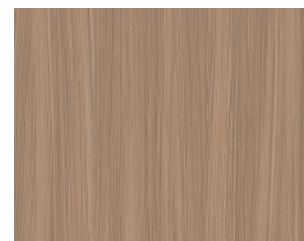
CW603 ■ ■ Oak



CW556 ■ ■ Oak



CW459 ■ ■ Thinwin



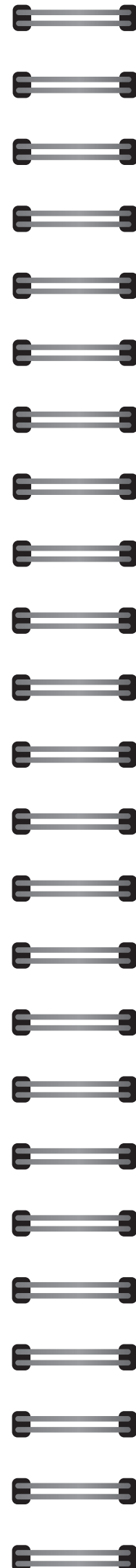
DW456 ■ ■ Teak



DW636 ■ ■ Elm



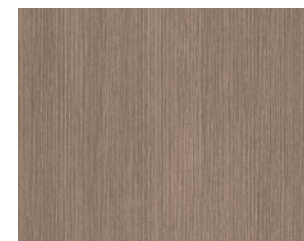
CW292 ■ ■ Oak



※ 컬러의 단위 무늬(반복 무늬)와 확대 이미지들을 On-Line에서 만나보세요.(On-Line 상의 이미지들은 실제 색상과 다를 수 있으니, 실물을 반드시 확인해보세요.)
 ※ Meet the color unit pattern(repeated) and enlarged images online.(Images online may differ from actual colors, please check the actual product.)



DW642 ■ ■ Ash



CW407 ■ ■ Wizard Grain



CW466 ■ ■ Walnut



CW408 ■ ■ Wizard Grain



DW467 ■ ■ Walnut



CW624 ■ ■ Oak

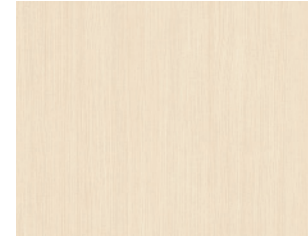
※ We notice that pattern and color of the product in the above image might differ from the actual product.



CW530



CW511 Elm



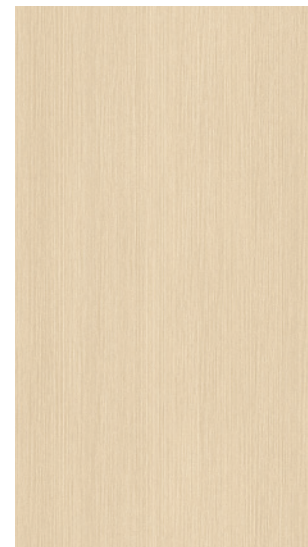
CW437 Cherry



CW552 Birch



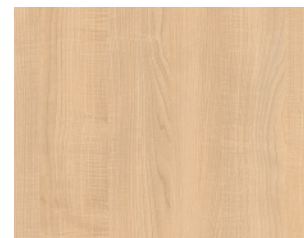
CW530 Ash



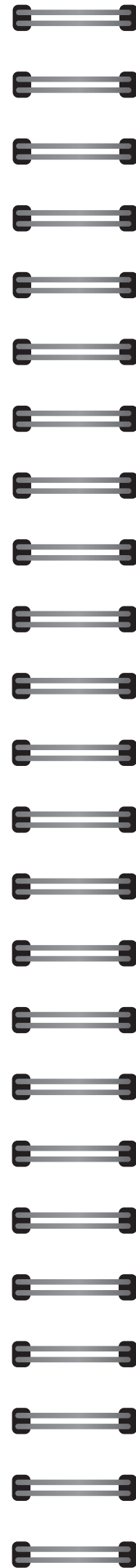
DW406 Wizard Grain



CW424 Olive Line



CW527 Maple



※ 컬러의 단위 무늬(반복 무늬)와 확대 이미지들을 On-Line에서 만나보세요.(On-Line 상의 이미지들은 실제 색상과 다를 수 있으니, 실물을 반드시 확인해주세요.)
 ※ Meet the color unit pattern(repeated) and enlarged images online.(Images online may differ from actual colors, please check the actual product.)



CW575 Ash



CW521 Pine



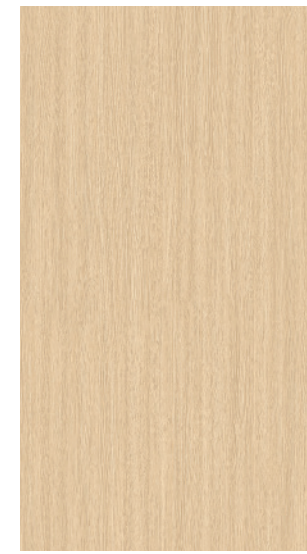
CW240 Elm



CW600 Ash



CW544 Rosewood



CW597 Oak



DW161 Oak



CW506 Teak



DW644 Ash



DW182 Teak



CW626 Oak



CWPF3 Oak

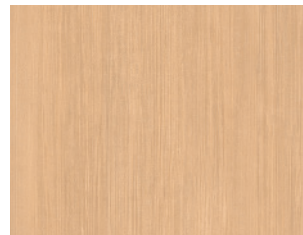
※ 상기 이미지 안의 제품 패턴과 색상은 실제 제품과 차이가 있을 수 있음을 알려드립니다.

※ We notice that pattern and color of the product in the above image might differ from the actual product.

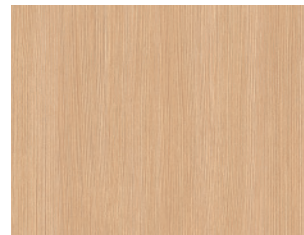
Wood 우드



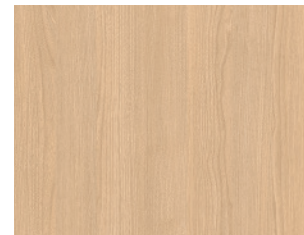
CW141 ■ ■ Maple



CW531 ■ ■ Ash



DW548 ■ ■ Oak



DW207 ■ ■ Teak



CW509 ■ ■ Elm



CW615 ■ ■ Oak



CW557 ■ ■ Oak



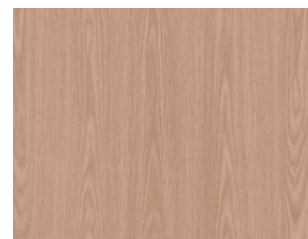
CW518 ■ ■ Ash



DW549 ■ ■ Oak



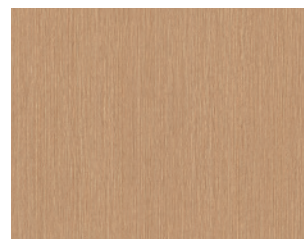
CW604 ■ ■ Washed Oak



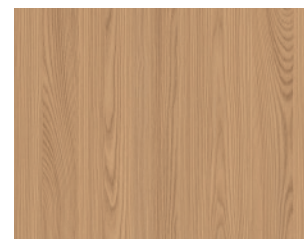
DW640 ■ ■ Ash



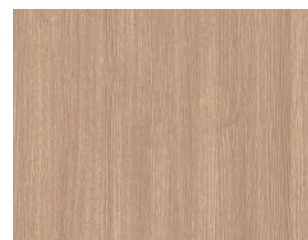
CW605 ■ ■ Washed Oak



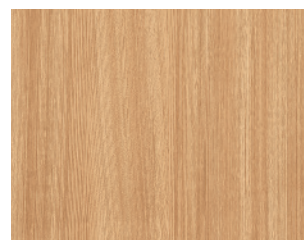
DW308 ■ ■ Oak



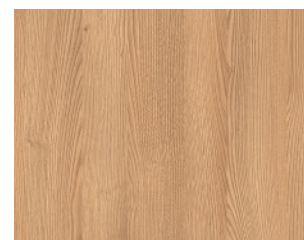
DW645 ■ ■ Ash



CW151 ■ ■ Oak



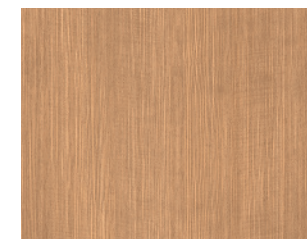
DW159 ■ ■ Oak



CW358 ■ ■ Castagno Cardduci



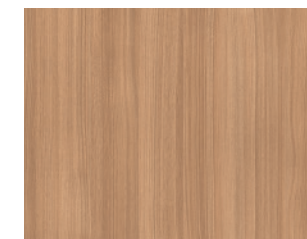
CW441 ■ ■ Bamboo



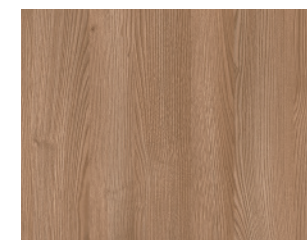
CW314 ■ ■ Ash



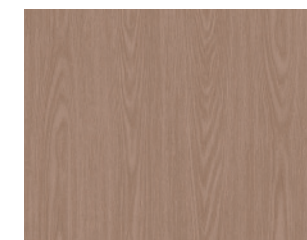
CW512 ■ ■ Teak



CW454 ■ ■ Noce

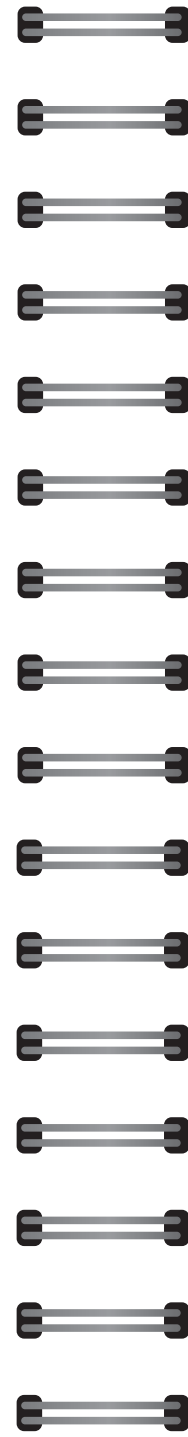


CWAC1 ■ ■ Oak



DW641 ■ ■ Ash

Wood 우드



※ 컬러의 단위 무늬(반복 무늬)와 확대 이미지들을 On-Line에서 만나보세요.(On-Line 상의 이미지들은 실제 색상과 다를 수 있으니, 실물을 반드시 확인해보세요.)
 ※ Meet the color unit pattern(repeated) and enlarged images online.(Images online may differ from actual colors, please check the actual product.)



※ 상기 이미지 안의 제품 패턴과 색상은 실제 제품과 차이가 있을 수 있음을 알려드립니다.



※ We notice that pattern and color of the product in the above image might differ from the actual product.

Wood 우드



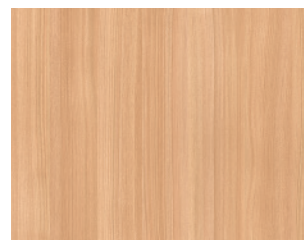
CW537



CW537 ■ ■ ■ Birch



CW590 ■ ■ ■ Birch



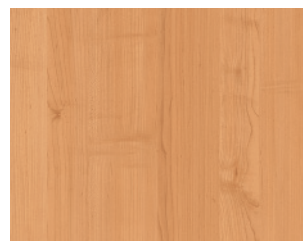
CW79 ■ ■ ■ Maple



CW175 ■ ■ ■ Oak



CW598 ■ ■ ■ Oak



DW157 ■ ■ ■ Maple



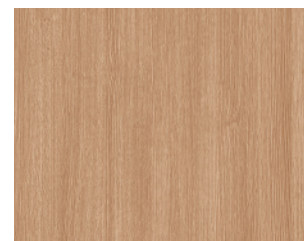
CW154 ■ ■ ■ Teak



CW453 ■ ■ ■ Noce

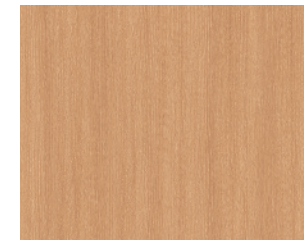


DW398 ■ ■ ■ Green Pine

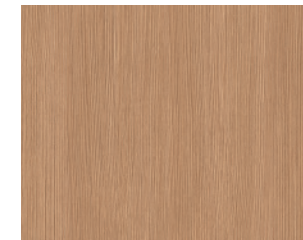


DW646 ■ ■ ■ Ash

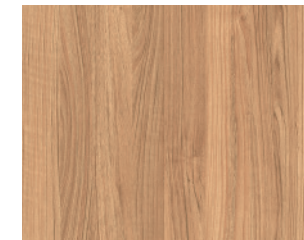
※ 컬러의 단위 무늬(반복 무늬)와 확대 이미지들을 On-Line에서 만나보세요.(On-Line 상의 이미지들은 실제 색상과 다를 수 있으니, 실물을 반드시 확인해보세요.)
 ※ Meet the color unit pattern(repeated) and enlarged images online.(Images online may differ from actual colors, please check the actual product.)



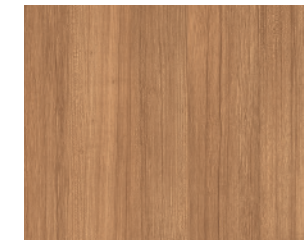
CW258 ■ ■ ■ Oak



DW550 ■ ■ ■ Oak



CW609 ■ ■ ■ Walnut



DW180 ■ ■ ■ Teak



CW427 ■ ■ ■ Noce



DW179 ■ ■ ■ Teak



CW455 ■ ■ ■ Noce



DW180 ■ ■ ■ Teak



CW124 ■ ■ ■ Cherry



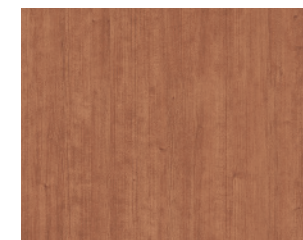
CWB1 ■ ■ ■ Cherry



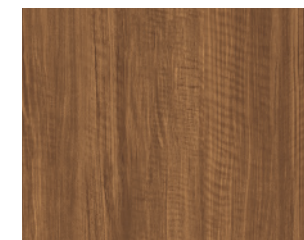
DW400 ■ ■ ■ Antique Pine



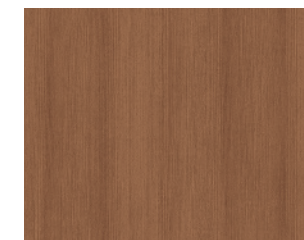
CW320 ■ ■ ■ Zebrano



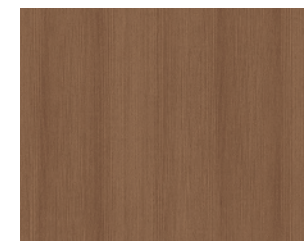
CW111 ■ ■ ■ Cherry



CW513 ■ ■ ■ Teak



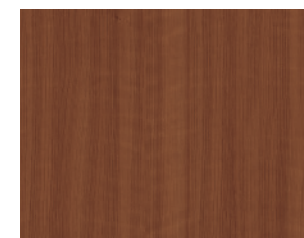
CW150 ■ ■ ■ Teak



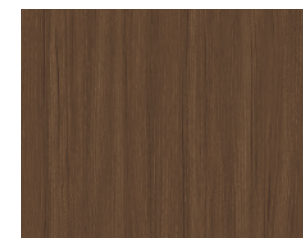
CW177 ■ ■ ■ Teak



CW44 ■ ■ ■ Anegre



CW69 ■ ■ ■ Cherry



DW190 ■ ■ ■ Teak



CW348 ■ ■ ■ Rosewood



CW87 ■ ■ ■ Walnut



SW008 ■ N A



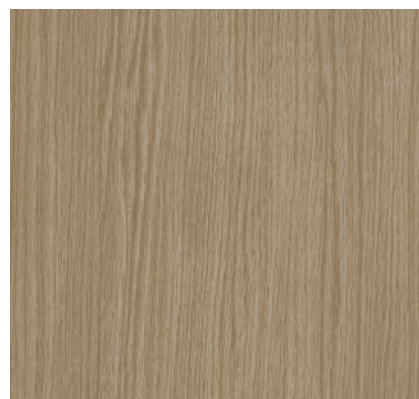
SW010 ■ N A



SW004 ■ A



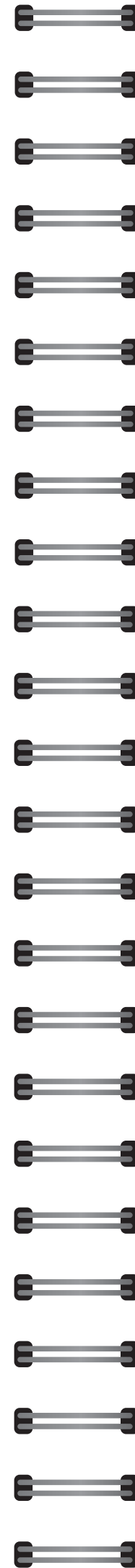
SW011 ■ N A



SW009 ■ N A



SW005 ■ A



※ 컬러의 단위 무늬(반복 무늬)와 확대 이미지를 On-Line에서 만나보세요.(On-Line 상의 이미지들은 실제 색상과 다를 수 있으니, 실물을 반드시 확인해보세요.)
 ※ Meet the color unit pattern(repeated) and enlarged images online.(Images online may differ from actual colors, please check the actual product.)



SW007 ■ N A



SW001 ■ A



SW002 ■ A



SW012 ■ N A



SW006 ■ A



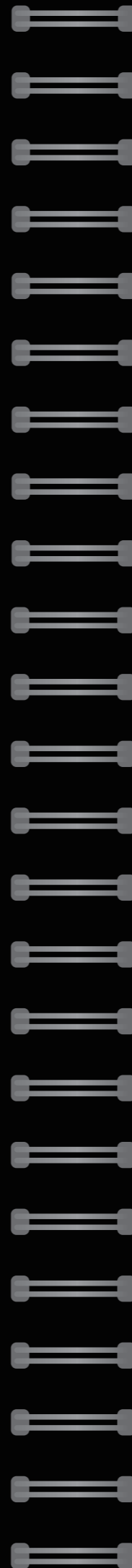
SW003 ■ A

Big Stone 빅스톤

빅 슬랩의 웅장한 마블링과 곧게 뻗은 크랙의 숨결을 느껴보세요.
 Feel the majestic marbling of the big slab and the breath of straight cracks.



BM013 / BM015



※ 컬러의 단위 무늬(반복 무늬)와 확대 이미지를 On-Line에서 만나보세요.(On-Line 상의 이미지들은 실제 색상과 다를 수 있으니, 실물을 반드시 확인하세요.)
 ※ Meet the color unit pattern(repeated) and enlarged images online.(Images online may differ from actual colors, please check the actual product.)



BM013 ■ N

Big Granite



BM015 ■ N

Big Granite



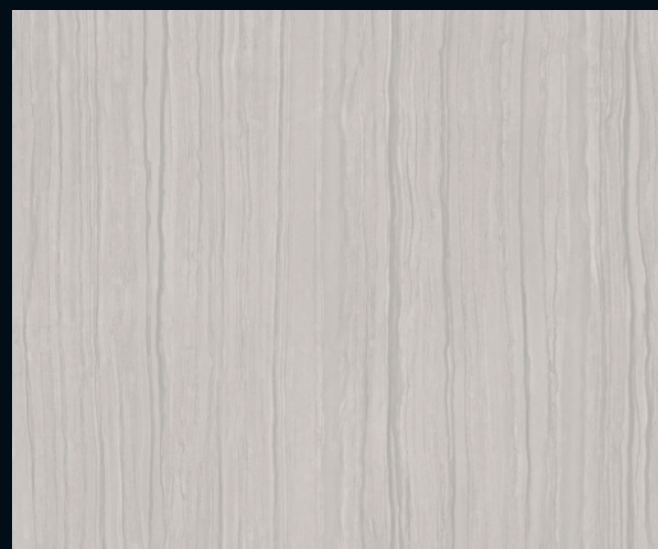
BM019 ■ N

Big Granite

※ We notice that pattern and color of the product in the above image might differ from the actual product.

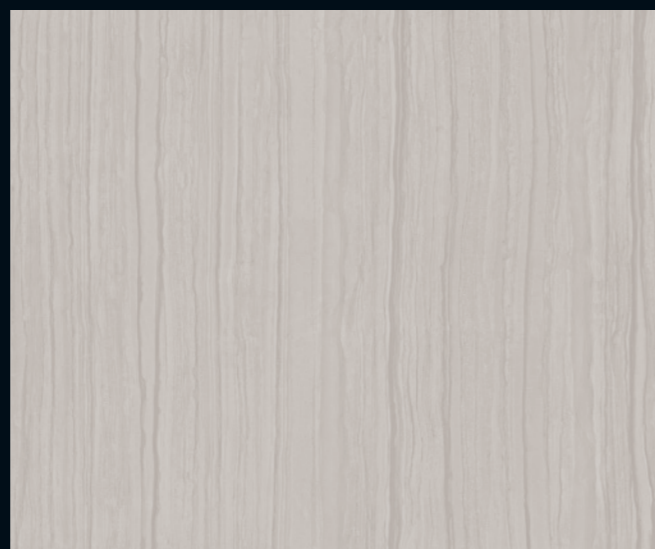


BM016



BM016 ■ ■ ■

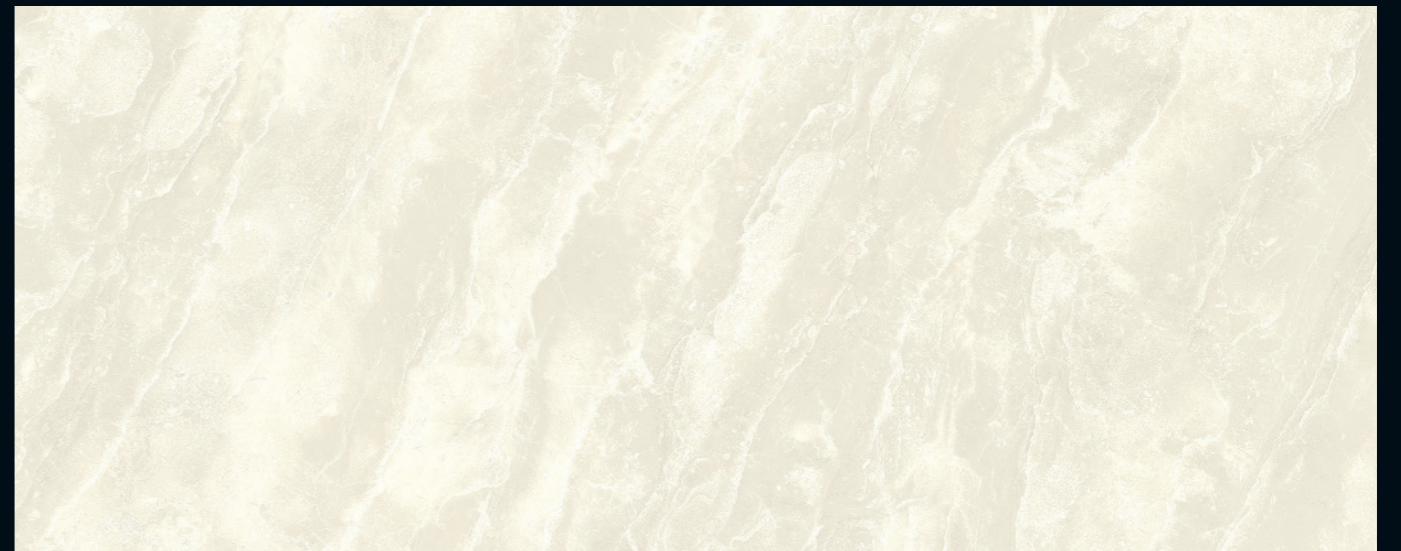
Big Travertine



BM017 ■ ■ ■

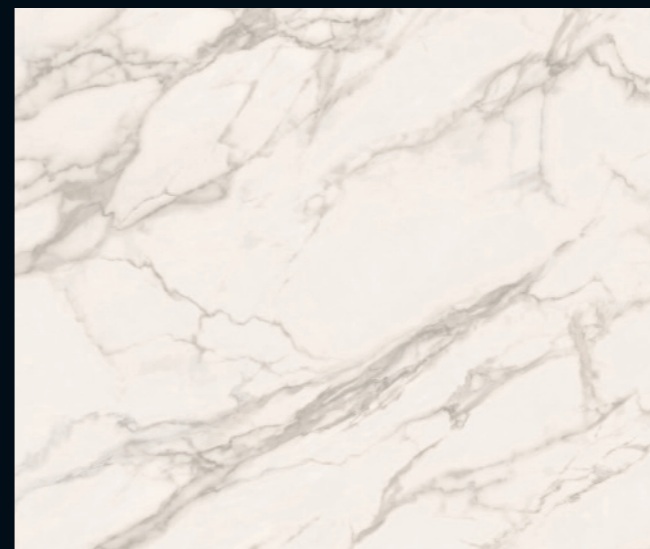
Big Travertine

※ 컬러의 단위 무늬(반복 무늬)와 확대 이미지를 On-Line에서 만나보세요.(On-Line 상의 이미지들은 실제 색상과 다를 수 있으니, 실물을 반드시 확인해주세요.)
 ※ Meet the color unit pattern(repeated) and enlarged images online.(Images online may differ from actual colors, please check the actual product.)



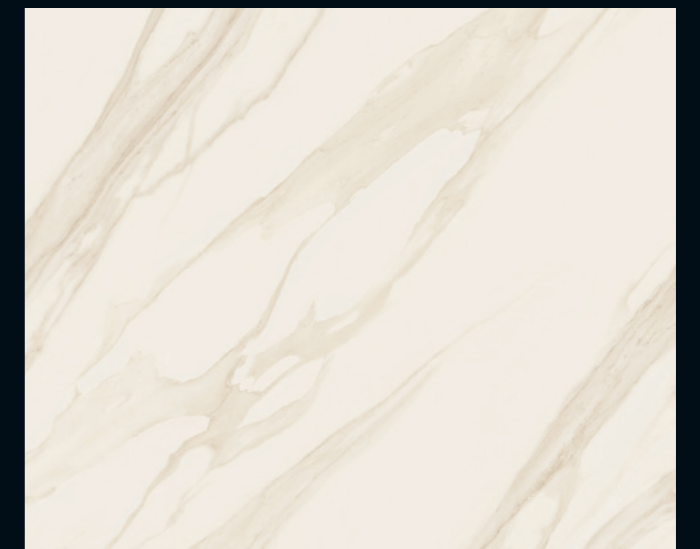
BM001 ■

Light Marbling



BM007 ■

Arabescato



BM008 ■

Borghini



BM002 ■

Marble



BM006 ■

Marquina

※ 상기 이미지 안의 제품 패턴과 색상은 실제 제품과 차이가 있을 수 있음을 알려드립니다.

※ We notice that pattern and color of the product in the above image might differ from the actual product.

Big Stone 빅스톤



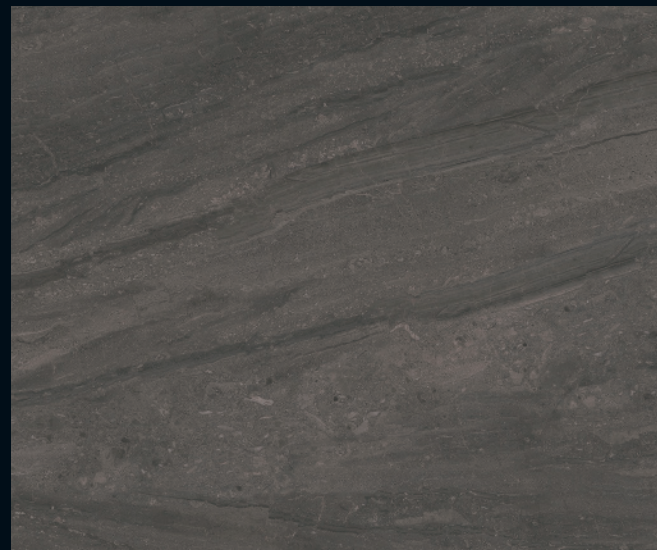
BM009 ■ Galaxy Marble



BM010 ■ Galaxy Marble



BM003 ■ Gray Marble



BM004 ■ Dark Gray Marble



BM011 ■ Bulky Concrete



BM012 ■ Bulky Concrete

※ 상기 이미지 안의 제품 패턴과 색상은 실제 제품과 차이가 있을 수 있음을 알려드립니다.

Stone 스톤

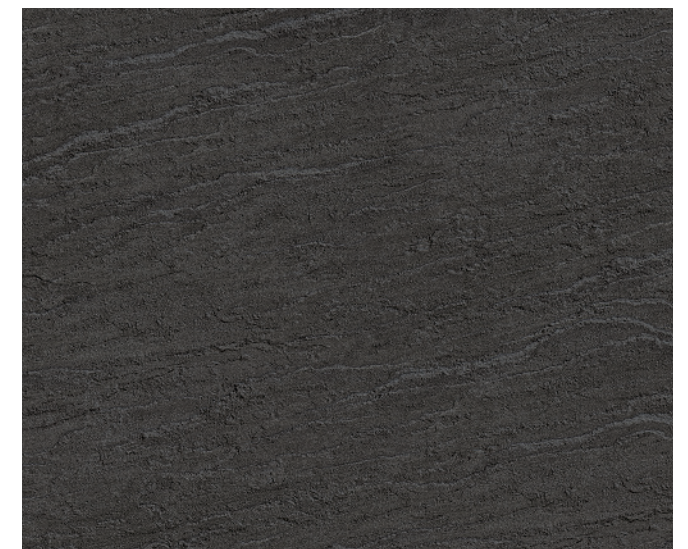
부드럽고 섬세한 컬러 위에 스톤의 느낌을 살린 터치감을 경험하세요.
Experience the touch feeling of stone on top of soft and detailed colors.



NS006



NS006 ■ N (N) (A)



NS005 ■ N (N) (A)

※ We notice that pattern and color of the product in the above image might differ from the actual product.

Stone 스톤



ML89



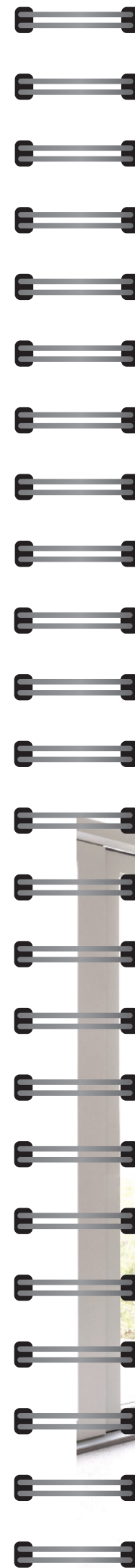
ML89 ■ N ©



ML91 ■ N



ML101 ■ N



※ 컬러의 단위 무늬(반복 무늬)와 확대 이미지를 On-Line에서 만나보세요.(On-Line 상의 이미지들은 실제 색상과 다를 수 있으니, 실물을 반드시 확인해보세요.)
 ※ Meet the color unit pattern(repeated) and enlarged images online.(Images online may differ from actual colors, please check the actual product.)



ML99 ■ N



ML97 ■ N ©



ML98 ■ N



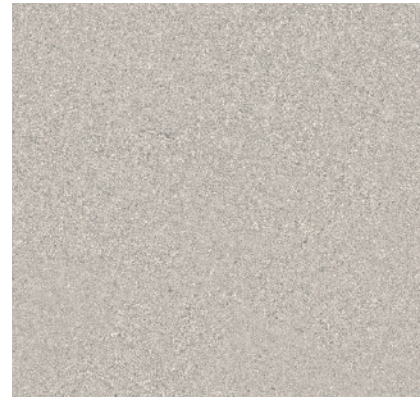
ML97

※ We notice that pattern and color of the product in the above image might differ from the actual product.

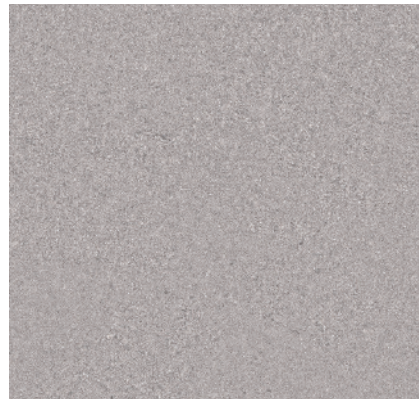
Stone 스톤



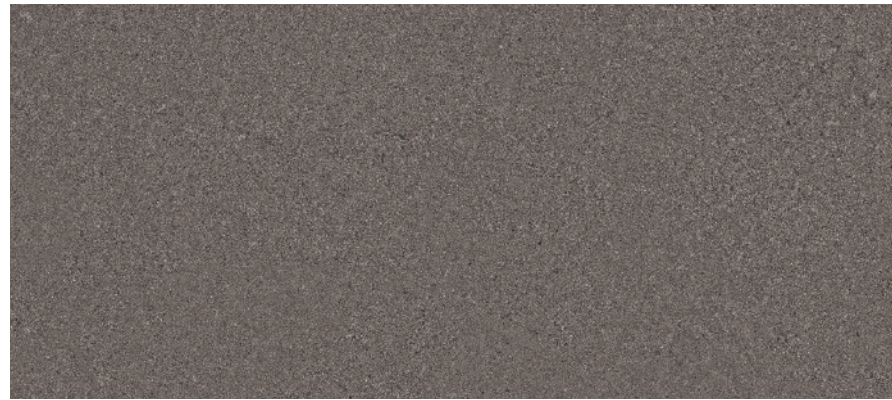
ML77 ■



ML75 ■



ML76 ■



ML80 ■



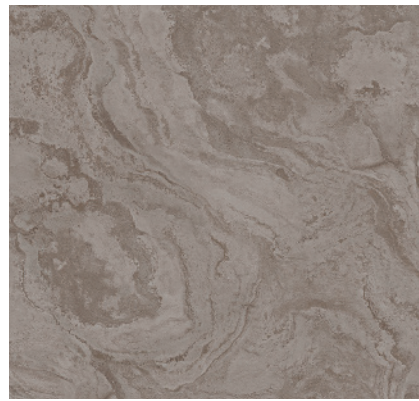
ML23 ■



ML71 ■



ML74 ■



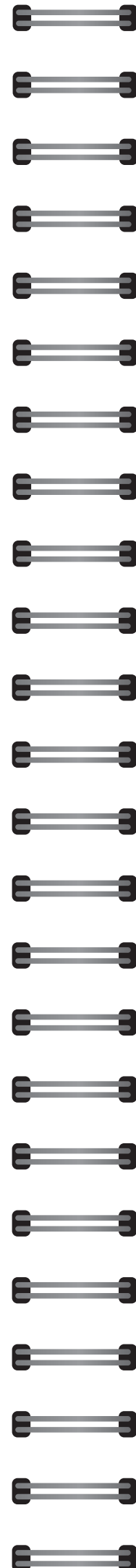
ML24 ■



ML72 ■

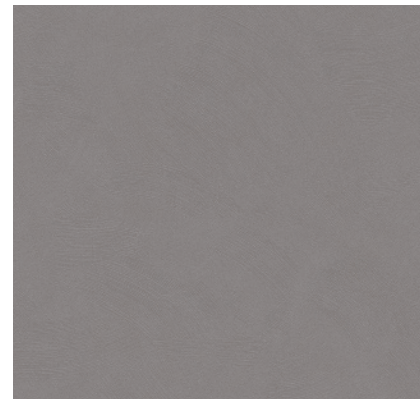


ML73 ■

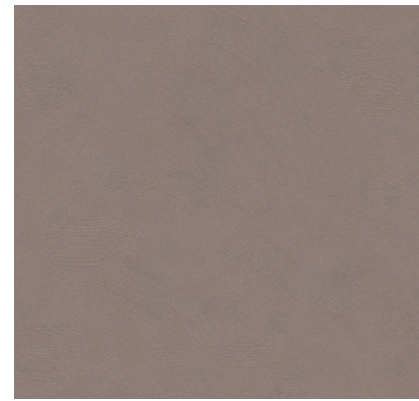


Stucco 스타코

아트페인팅의 살아있는 터치감이 세련되고 고급스러운 분위기를 연출합니다.
The alive touch of art painting creates a refined and luxurious mood.



MLS05 ■ N



MLS02 ■ N @



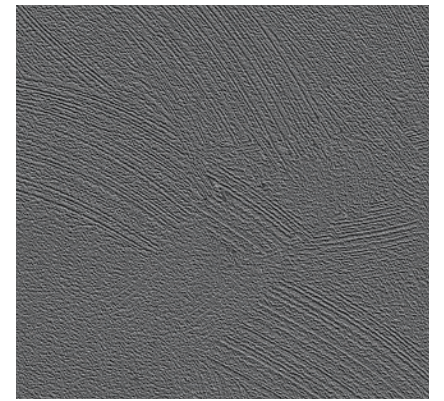
MLS03 ■ N



MLS01 ■ N



MLS06 ■ N



MLS04 ■ N

Concrete / Mortar 콘크리트 / 모르타르

가공되지 않은 거친 질감과 시크함으로 나만의 앤틱한 공간을 연출해 보세요.
 Create your own antique space with unfashioned texture and chic.



ML92 ■ N



ML93 ■ N @

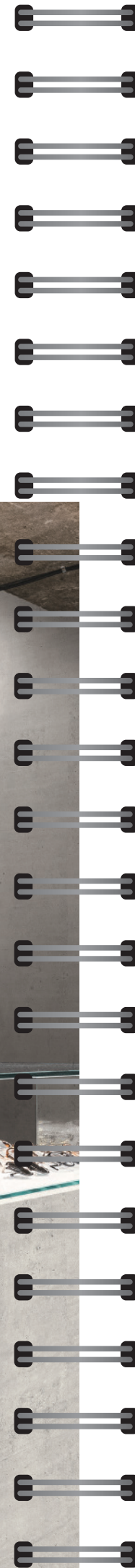


ML94 ■ N



ML93

※ 상기 이미지 안의 제품 패턴과 색상은 실제 제품과 차이가 있을 수 있음을 알려드립니다.



※ 컬러의 단위 무늬(반복 무늬)와 확대 이미지를 On-Line에서 만나보세요.(On-Line 상의 이미지들은 실제 색상과 다를 수 있으니, 실물을 반드시 확인해주세요.)
 ※ Meet the color unit pattern(repeated) and enlarged images online.(Images online may differ from actual colors, please check the actual product.)



ML22



ML64 ■



ML22 ■ @



EL178 ■ @



EL177 ■ @

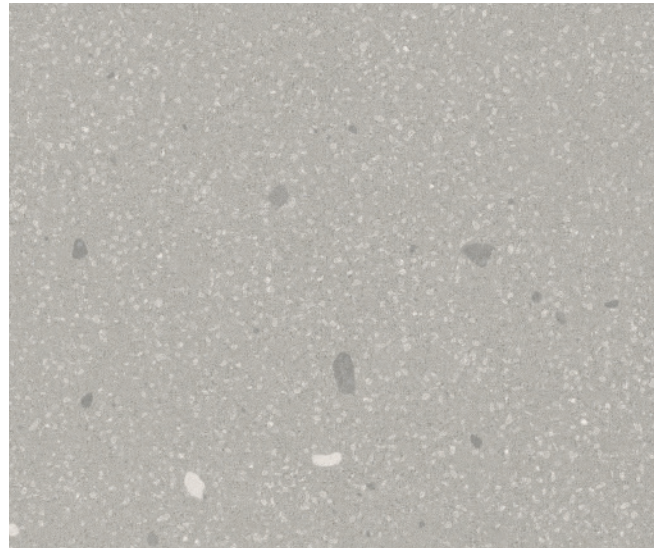


EL176 ■ @

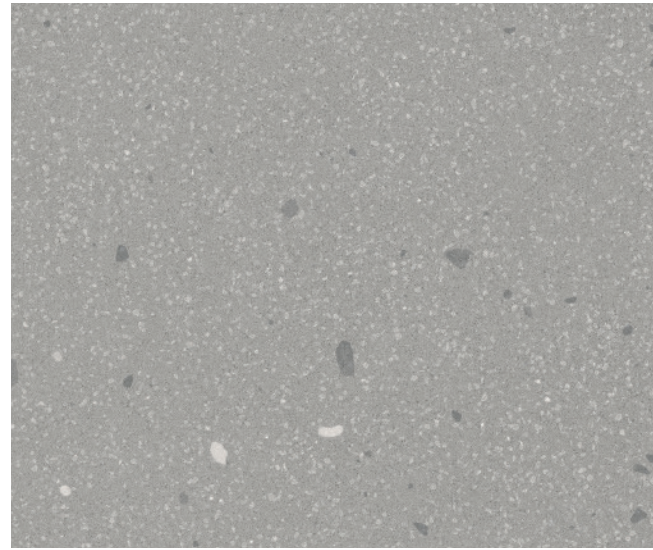
※ We notice that pattern and color of the product in the above image might differ from the actual product.

Marble 마블

고급스러운 유럽풍의 대리석이 선사하는 아름다움과 깨끗함을 느껴보세요.
 Feel the beauty and cleanliness of luxurious European-style marble.



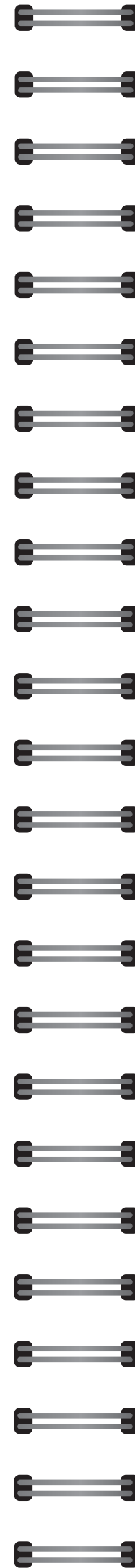
ML96 ■ N



ML95 ■ N ©



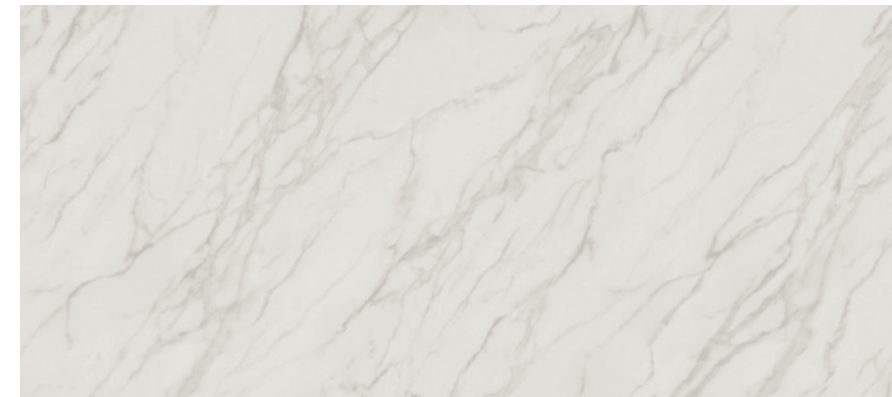
ML95



※ 컬러의 단위 무늬(반복 무늬)와 확대 이미지를 On-Line에서 만나보세요.(On-Line 상의 이미지들은 실제 색상과 다를 수 있으니, 실물을 반드시 확인해보세요.)
 ※ Meet the color unit pattern(repeated) and enlarged images online.(Images online may differ from actual colors, please check the actual product.)



ML56



ML67 ■



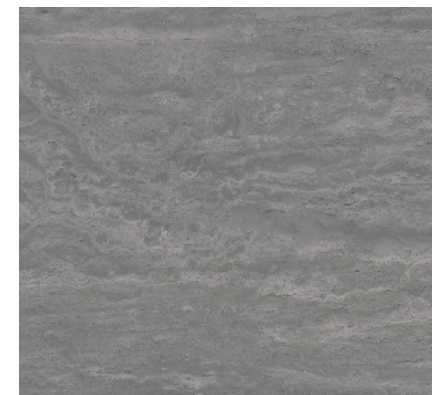
RM12 ■



ML56 ■ ©



ML57 ■



ML58 ■

※ We notice that pattern and color of the product in the above image might differ from the actual product.

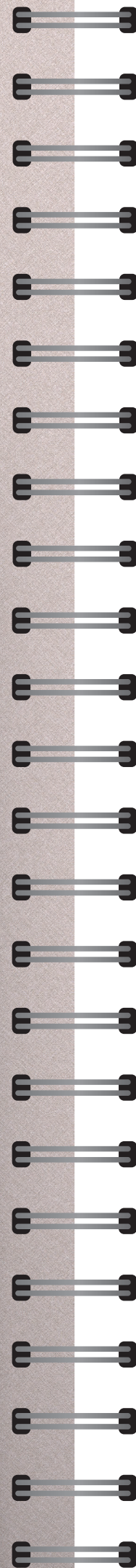
Textile 텍스타일

다양한 색감이 깃든 섬세한 직물이 따뜻하고 포근한 공간을 안겨줍니다.
Detailed fabrics in various colors give a space warmly and snugly.

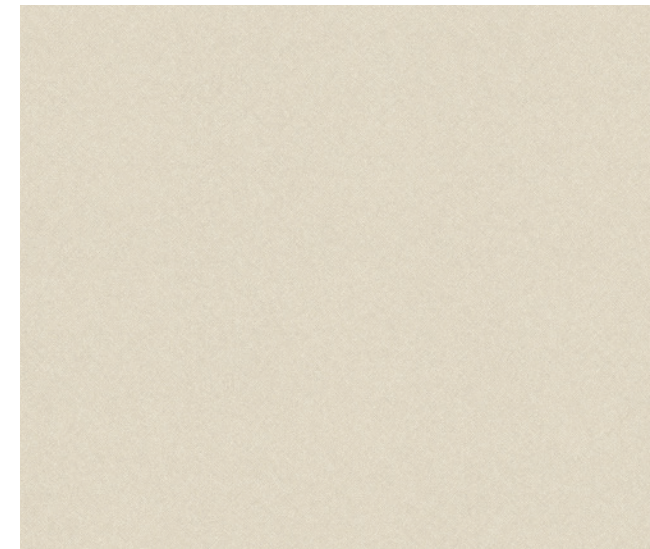


SF012 / SF014

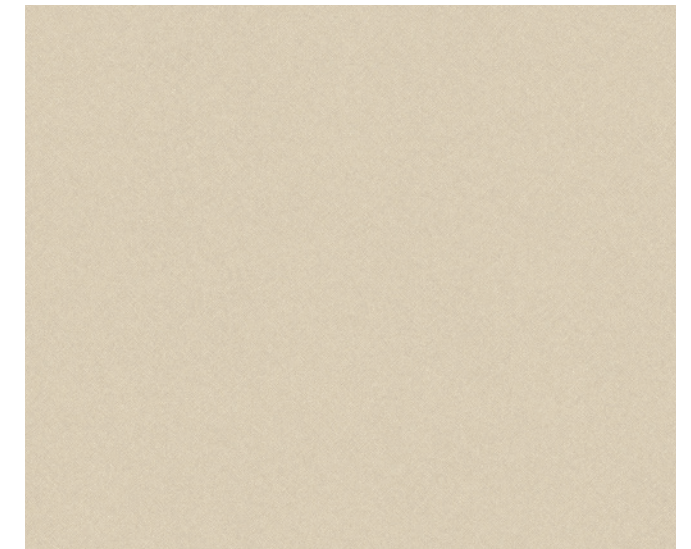
※ 상기 이미지 안의 제품 패턴과 색상은 실제 제품과 차이가 있을 수 있음을 알려드립니다.



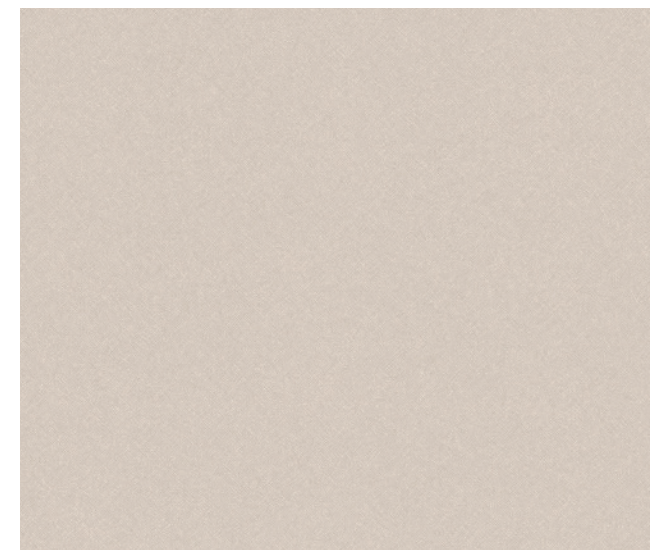
※ 컬러의 단위 무늬(반복 무늬)와 확대 이미지를 On-Line에서 만나보세요.(On-Line 상의 이미지들은 실제 색상과 다를 수 있으니, 실물을 반드시 확인해주세요.)
 ※ Meet the color unit pattern(repeated) and enlarged images online.(Images online may differ from actual colors, please check the actual product.)



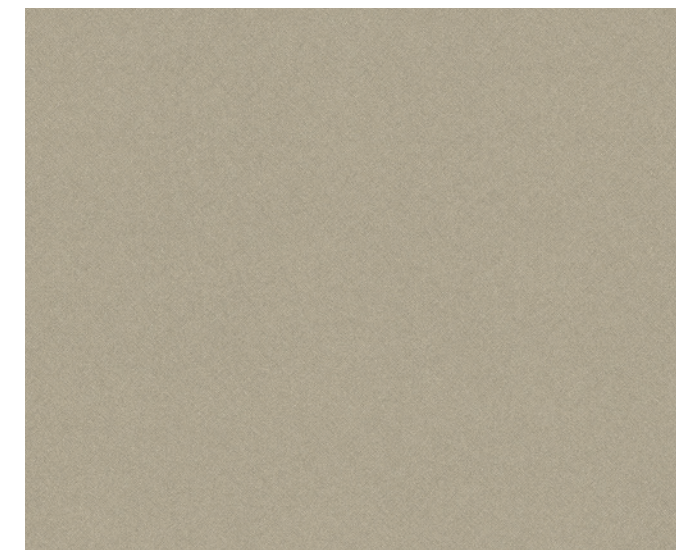
SF011 ■ N △



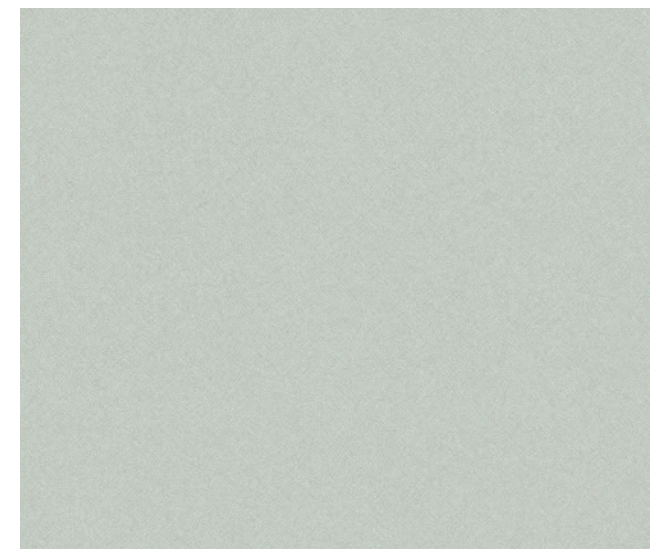
SF012 ■ N △



SF014 ■ N △



SF015 ■ N △



SF013 ■ N △

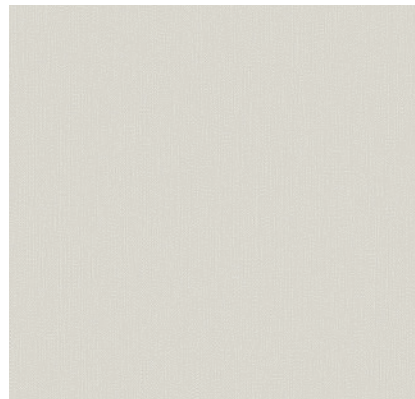


SF016 ■ N △

※ We notice that pattern and color of the product in the above image might differ from the actual product.



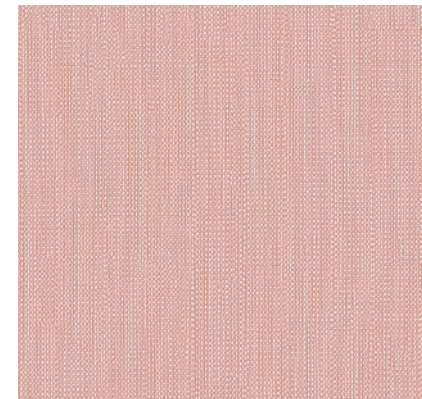
SF002



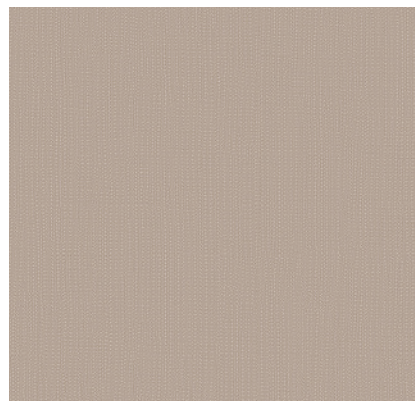
SF009 ■ ▲



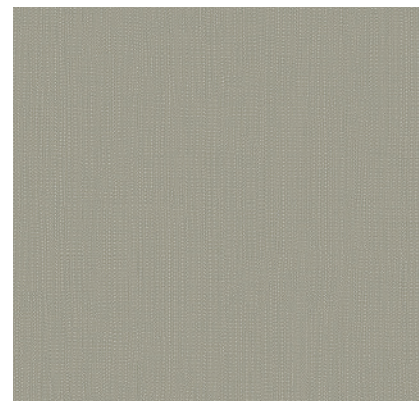
SF002 ■ ● ▲



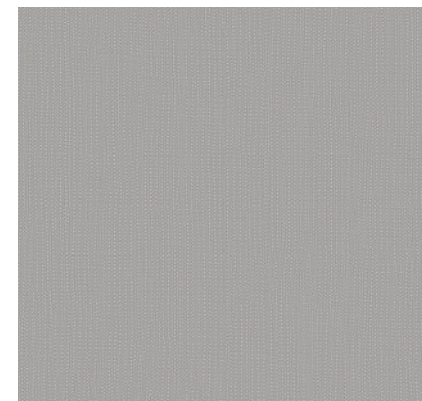
SF003 ■ ▲



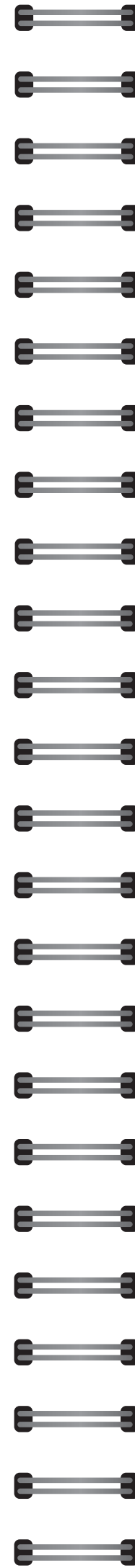
SF005 ■ ▲



SF006 ■ ▲



SF008 ■ ▲



※ 컬러의 단위 무늬(반복 무늬)와 확대 이미지를 On-Line에서 만나보세요.(On-Line 상의 이미지들은 실제 색상과 다를 수 있으니, 실물을 반드시 확인해보세요.)
 ※ Meet the color unit pattern(repeated) and enlarged images online.(Images online may differ from actual colors, please check the actual product.)



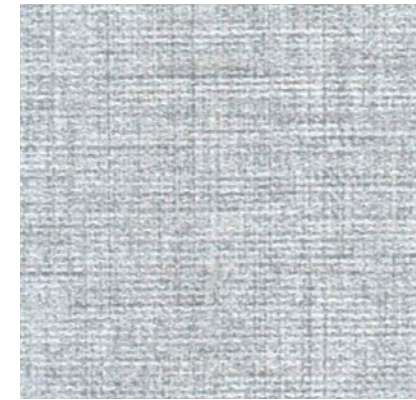
ML49 ■



EL235 ■ ▲



EL051 ■ ▲



ML47 ■



ML45 ■



ML48 ■



EL043 ■ ▲



EL044 ■ ▲



EL049 ■ ▲



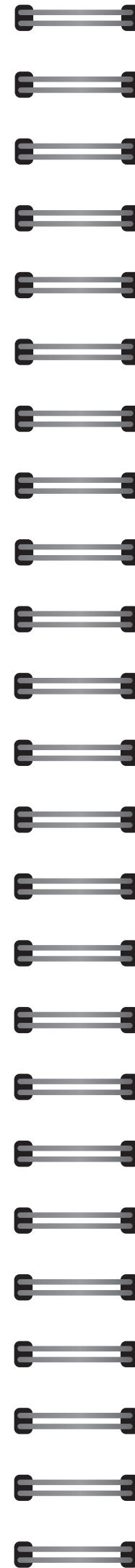
※ We notice that pattern and color of the product in the above image might differ from the actual product.

Leather 레더

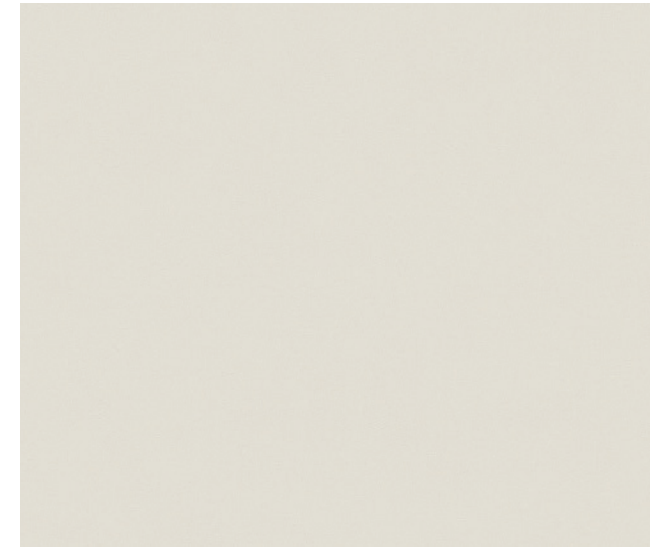
가죽만이 지닌 클래식하면서도 고급스러운 색상, 리얼한 터치감은 럭셔리 그 자체입니다.
The classic and luxurious colors and the realistic touch of leather are luxury itself.



ML86



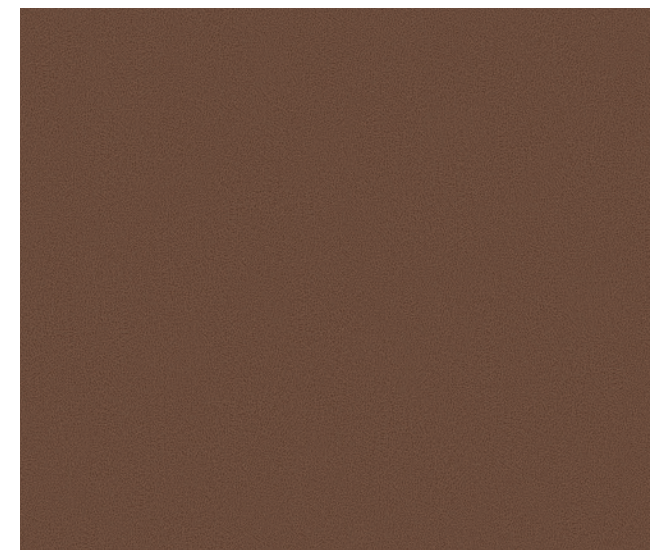
※ 컬러의 단위 무늬(반복 무늬)와 확대 이미지를 On-Line에서 만나보세요.(On-Line 상의 이미지들은 실제 색상과 다를 수 있으니, 실물을 반드시 확인해보세요.)
 ※ Meet the color unit pattern(repeated) and enlarged images online.(Images online may differ from actual colors, please check the actual product.)



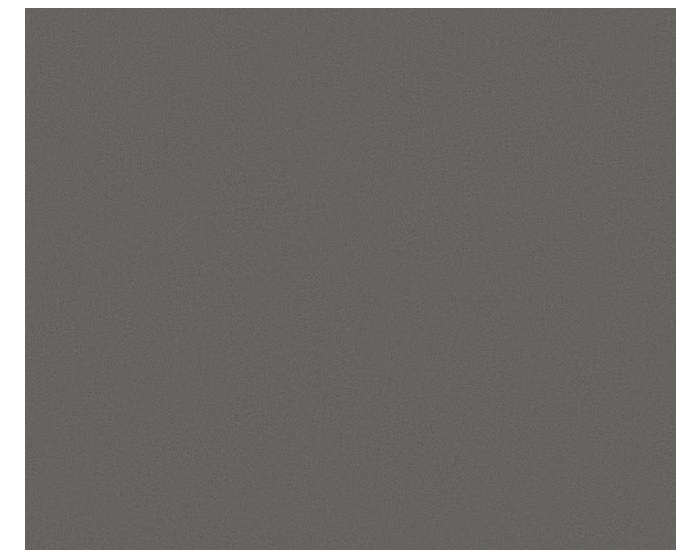
ML83 ■ N



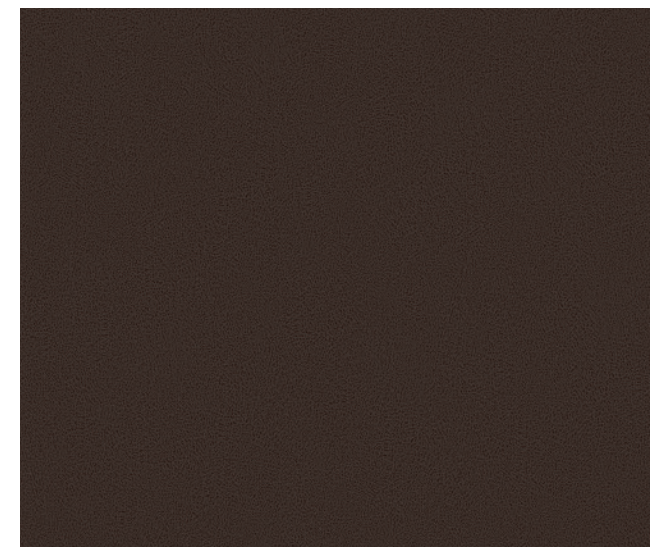
ML84 ■ N



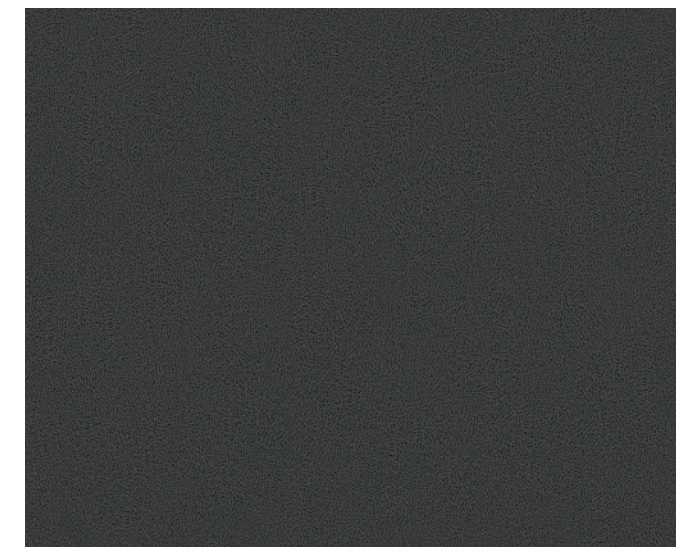
ML86 ■ N ☉



ML85 ■ N



ML87 ■ N



ML88 ■ N

※ We notice that pattern and color of the product in the above image might differ from the actual product.

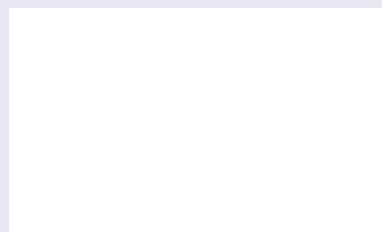
Specialty

Interior Film for railroad application

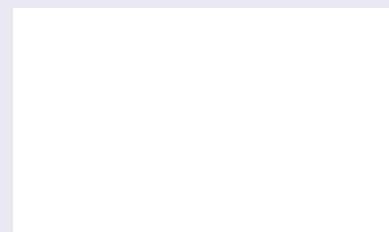
We offer Interior film specialized for railroad application meeting the technical standards of the Korean Ministry of Land, Infrastructure and Transport, and it is applied to KTX and SRT.

| Inside Panel Fire Safety Standards | | | | | | |
|------------------------------------|----------------|--|------------------|-------|-------|-------|
| Fire Performance Requirements | Test Method | Test Unit | Passing Criteria | | | |
| | Test Standard | | HL1 | HL2 | HL3 | HL4 |
| Inside Panel | ISO 5660-1 | MARHE(kW/m ² , @50kW/m ²) | - | ≤ 90 | ≤ 90 | ≤ 60 |
| | ISO 5658-2 | Qasb(MJ/m ²) | ≥ 1.2 | ≥ 1.2 | ≥ 1.5 | ≥ 1.5 |
| | ISO 5658-2 | CFE(kW/m ²) | ≥ 15 | ≥ 18 | ≥ 20 | ≥ 20 |
| | ASTM E 662 | DS(1.5min) | ≤ 150 | ≤ 100 | ≤ 75 | ≤ 50 |
| | ASTM E 662 | DS(4.0min) | ≤ 300 | ≤ 200 | ≤ 150 | ≤ 100 |
| | ASTM E 662 | DS(10min) | - | - | ≤ 300 | ≤ 200 |
| BS 6853 Annex B.2 | Toxic index(R) | ≤ 3.6 | ≤ 2.7 | ≤ 1.6 | ≤ 1.6 | |

HL4 is the highest Hazard level in the Fire Performance for Inside panel



DFS03



DFP04

Specialized Flame retardant Interior Film

Japanese Non-Flammable Test

LX Hausys offers interior film certified for non-flammable and eco-friendly (F☆☆☆☆) of Japanese Ministry of Land, Infrastructure, Transport and Tourism.

Japanese non-flammable Certification (limited patterns only)



Interior film on non-combustible materials (gypsum board)



Interior film on aluminum materials



Interior film on steel materials



Chinese Flame Resistance

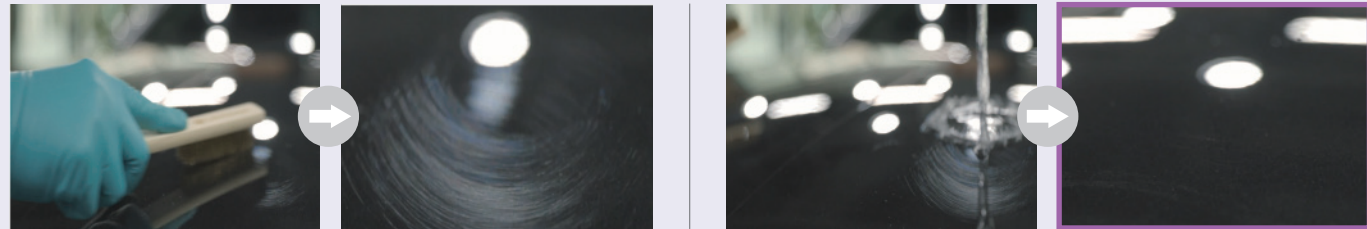
LX Hausys Interior Film has the non-combustible rating(A2) according to Article 9 of the Fire Control Law of the People's Republic of China.

Chinese non-combustible rating (A2) Report (limited patterns only)



Self-healing Interior Film

LX Hausys Self-healing Interior Film can be self-repaired by applying hot water (80°C ↑) or hot air to everyday scratches.



Scratch the film

Self-repaired with hot water

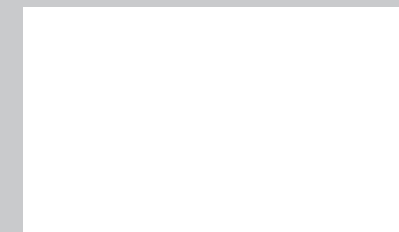
※ Test method: Scratches are generated on the surface using a *Wire Brush (15mm/min, 5 reciprocations), and residual scratches are measured after pouring hot water (80°C or above) and removing moisture.
 ※ This is based on our own test results, and actual results may vary depending on the usage environment or test conditions.

| | |
|-----------------------------|--------------------|
| * Wire Brush | |
| Model No. | Brass brush 4 lows |
| Wire diameter x hair length | φ0.14 x 16mm |

Experience it for yourself

Create scratches on the sample surface, and remove them by wiping with hot water.

※ Caution: Excessive exposure to heat may cause permanent damage due to film deformation. (Optimal surface temperature: 80 ~ 120°C)



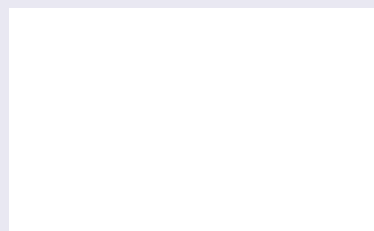
Black

※ There is a minimum order quantity for this product. If you wish to make a purchase, please inquire at your nearest vendor.

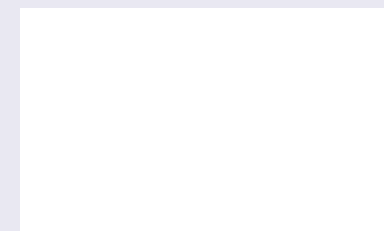
Window Film

This is a decorative film for windows that can be used in various places such as commercial, residential areas, and offices.

Windeco(PVC) _ EP115, LC5510



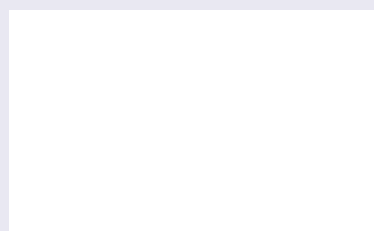
EP115



LC5510



Windeco(PET)_LC5601



LC5601



※ If you wish to make a purchase, please inquire at your nearest vendor.

Certification & Test Report

Fire Safety



LX Hausys Interior film BENIF's fire safety is recognized by earning the global fire certifications

Interior space



KFI Certification

It is Korean Flame Retardant Certificate. LX Hausys uses fire retardants approved by Korea Fire Institute, and only products have passed the flame retardant test can be released to the market. (Certificates are issued for products that pass the test)



CE Certification

It is the stability verification standard of European Union(EU). The product's stability within the European market has been substantiated by passing not only the flame spread rate test but also formaldehyde and heavy metal tests. (Certification Number 1121-CPR-KA5008, BW,NW,CW,DW,ML,RM,RS,RE,EL,MS,RP)

ASTM Flame and Smoke Diffusion Test Inspection

Korea conformity Laboratories conducted flame and smoke diffusion tests in accordance with ASTM E84-21a standards And secured the highest grade A CLASS performance. (Report CT23-085727E, All flame retardant products)

Marine



IMO/MED certification

In accordance with IMO Res.MSC.307(88)-(2010 FTP Code) standards, In the event of a ship fire, tests were conducted on flame spread, smoke spread, and toxic gas generation, and product and manufacturing Process standards were met. (Certification No. 74092 A0, All flame retardant products except MS, SF)

Eco-Friendly



LX Hausys is constantly striving to minimize substances harmful to the human body and the environment, considering the safety and environment of customers and builders.

Human-friendliness



Eco-Friendly construction materials certification

We have obtained the highest level in the verification of harmful substances in building materials in accordance with the Healthy Building Material Certification (HB Mark) established by the Korea Air Cleaning Association However, please note that the safety of these materials in contact with food has not been verified. (Group standards certification No. HB2679G22-01, CW,DW,SW,BM,ML,RM,RS,RE,RGM,SM,NV,RP)



Korea Eco-Label

BENIF PW products are officially recognized as eco-friendly products by the Ministry of Environment by reducing harmful substances and living environmental pollution and obtaining environmental label certification by applying recyclable release paper which has an Air-Free function firstly in the industry However, the stability of food contact has not been verified, so please use it carefully. (Certification No. 28714)



The European textile product quality certification

This certification verifies the absence of approximately 200 harmful substances in products that come into contact with skin, such as general products, bedding, toys, and interior materials. BENIF's Solid colors were the first in the industry to obtain a 1st class certification (Baby Class) under this standard, which confirms their suitability for use in clothing and toys for infants and toddlers under 3 years of age. (Certification No. SE025 164519 TESTEX)

Environment-friendliness



Environmental Product Declaration (EPD)

It is a system that evaluates the environmental impact of the entire process, including raw materials, production, distribution, use, and disposal of certified products, and encourages environmental improvements. BENIF Wood (CW, DW, FW, SW) has obtained this certification and is continuously striving for environmental improvement. (Environmental Product Certification No. 2020-483)



Low Carbon Product Certification

If the carbon footprint value is equal to or less than the maximum allowable carbon emissions (average carbon emissions of environmentally friendly labeled products of the same type), or if the minimum carbon reduction rate is achieved, it is certified by the Korea Environmental Industry & Technology Institute. BENIF Solid (RS, RGM) has obtained this certification and is widely used as an environmentally friendly product. (Environmental Product Certification No. 2019-030)

Installation Instructions

1. Preliminary Work

- It is necessary to check the type and condition of the adherend(MDF, etc.) on which the film is applied to see if any problems may occur during installation.
 - In the case of MDF, it is recommended to use MDF with uniform density, as the difference in installation adhesion and flame retardant performance occurs depending on the density.
 - The painted surface should be cleaned with alcohol to remove contaminants and checked for damage by the solvent. The uneven areas should be polished with sandpaper after putting treatment and foreign matters should be removed with a dust brush.
 - For iron plates, after removing contaminants from the surface with alcohol or lacquer, the uneven areas caused by welding should be treated by puttying. Foreign matters should be removed with a dust brush after polishing the surface with sandpaper.
- It is necessary to perform preliminary inspection on whether the product selected by the consumer has defects. (pattern name, appearance, etc.)
- Film installation should be carried out after carpentry work and before painting and wallpapering.

2. Surface Pre-work

- The cross-section(cutting) part of the adherend(MDF, etc.) where the film will be applied must be sufficiently polished with sandpaper.
- In particular, in the case of wood(MDF, PB, etc.), smoothness of the bent and joint parts is important. Therefore, if the surface condition is rough after inspecting in advance, it must be sufficiently polished with sandpaper or putty treatment before installation.

3. Primer Treatment (PM-04)

- When applying the film, LX Hausys proprietary water-based primer (PM-04) must be used.
- For the primer treatment, the cut surface of wood(MDF, PB, etc.) among the adherends has a high primer absorption rate, so the primer should be applied 2-3 times. Overlapping is done after the primer applied before has been completely dried.
- Please take note of the recommended dilution ratio and drying time for Primer as provided below.

| Ratio of mixing water and water-based primer | Time | Month | Primer | Water | Drying time (recommended) |
|--|--------------------------------|------------------|--------|-------|---------------------------|
| | Winter season | December - March | 1 | 1 | 24 |
| Spring and Autumn season | April - May, October- November | 1 | 1.5 | 12 | |
| Summer season | June - September | 1 | 2 | 8 | |

4. Installation Methods

- Film installation must be carried out in accordance with the installation guidelines in the specification sheet, and for further details, please refer to the installation manual.(service.lxhausys.co.kr - reference)
- During installation, the cut surface of the film should not be visible as much as possible.
- Film should be applied in a way that the substrate is not visible as much as possible.
- Color differences may occur between product lots, so it is necessary to sort the lots for installation.
- The site temperature should be maintained at 15~25°C from 72 hours before installation to 48 hours after installation. In winter, if the product is left outside, adhesion may decrease due to a drop in temperature.

5. Installation Instructions for Specific Products

- | | |
|-------------------|--|
| SW, EL | <ul style="list-style-type: none"> These products do not have a surface film layer but only do surface treatment. If you strongly rub the corners with wool felt or cotton gloves, the printed layer may be damaged, so please use our product carefully. Due to the surface treatment layer, it may slip when film is overlapped. Therefore, the installation should be done after applying the water-based primer PM-04 undiluted solution and drying it sufficiently. |
| PME | <ul style="list-style-type: none"> When applying the film to a surface with foreign substances or contaminants, those substances may protrude from the surface and negatively affect the film's adhesion. Therefore, it is essential to thoroughly clean the surrounding environment and perform sanding work on the adhesive surface to ensure optimal adhesion. |
| PW, SF, NS | <ul style="list-style-type: none"> When installing products that are thicker and have a different depth or shape of embossing than regular products, it is necessary to apply sufficient pressure to attach the product to the surface after primer treatment. Also, it is important to apply more force to the folding and overlapping areas to prevent any lifting. |

6. Other Precautions

- Film installation must be carried out according to the installation standards of the specification.
- For installation methods and adherends(MDF, etc.), in case of the installation on a different type of adherend from the specifications, you must contact LX Hausys or a vendor to confirm the possibility of installation.
 - Air bubbles may occur during installation on acrylic adherends, so please check with LX Hausys or a vendor before installation.
- The shelf life of LX Hausys Interior Film is valid for two years from the date of factory production. Please store the product in a place without high temperature and humidity and avoid direct sunlight. The ideal conditions for storage are 20°C temperature and 50% humidity.
- When moving or transporting the product, please avoid dropping it as the product may break due to impact (especially during the winter season).
- Please be advised that release paper may undergo contraction or expansion during processing and storage due to the impact of heat and moisture. Consequently, we recommend utilizing release paper measurements as a point of reference, and when cutting, we suggest providing extra margin beyond the actual dimensions of the adhering surface.
- For products with deep embossing, special attention should be paid during installation to ensure sufficient adhesion through stronger pressure, as the area of adhesive installation on overlapping parts may be reduced.